

The Real Exchange Rate, Innovation and Productivity: Regional Heterogeneity, Asymmetries and Hysteresis*

Laura Alfaro[†]

Harvard Business School and NBER

Alejandro Cuñat[‡]

University of Vienna and CES-ifo

Harald Fadinger[§]

University of Mannheim and CEPR

Yanping Liu[¶]

University of Mannheim

May 2019

Abstract

We evaluate manufacturing firms' responses to changes in the real exchange rate (RER) using detailed firm-level data for a large set of countries for the period 2001-2010. We uncover the following stylized facts: In export-oriented emerging Asia, real depreciations are associated with faster growth of firm-level productivity, higher sales and cash-flow, and higher probabilities to engage in R&D and export. We find negative effects for firms in other emerging economies, which are relatively more import dependent, and no significant effects for firms in industrialized economies. Motivated by these facts, we build a dynamic model in which real depreciations raise the cost of importing intermediates, affect demand, borrowing-constraints and the profitability of engaging in innovation (R&D). We decompose the effects of RER changes on productivity growth across regions into these channels. We estimate the model and quantitatively evaluate the different mechanisms by providing counterfactual simulations of temporary RER movements and conduct several robustness analyses. Effects on physical TFP growth, while different across regions, are non-linear and asymmetric.

JEL Codes: F, O.

Key Words: real exchange rate, innovation, productivity, exporting, importing, financial constraints, firm-level data

*We thank participants at AEA meetings, ESSIM Conference in Tarragona, Barcelona GSE Summer Forum, Princeton JRCPPF Conference, IMF Macro-Financial Research Conference, SED, EAE-ESEM Lisbon, CEBRA Conference in Rome, CompNet 7th Annual Conference, Workshop on International Economic Networks (WIEN), Verein fuer Socialpolitik, XIX Conference in International Economics, Central Bank Macro Modeling Workshop, ESEM Cologne, IMF 19th Jacques Polak Annual Research Conference and seminar participants at Aarhus, CREI, ETH, Frankfurt, IADB, IFN, Iowa, Mannheim, Nottingham, NES Moscow, Notre Dame, Oslo, The Graduate Institute Geneva, Universidad de Chile, Universidad Católica de Chile, Queen Mary University of London, and Pol Antràs, Antoine Berthou, Kamran Bilir, Richard Brauer, Alberto Cavallo, Anusha Chari, Fabrice Defever, Jonathan Eaton, Jeff Frieden, Julian di Giovanni, Manuel García-Santana, Steve Redding, Mark Roberts, Jesse Schreger, Stefano Schiavo, Monika Schnitzer, Bent Sorensen, Jim Tybout, Van Anh Vuong, and Shang-Jin Wei for helpful comments. We particularly thank Andy Powell, Julian Caballero, and the researchers at the IADB's Red de Centros project on the structure of firms' balance sheets. Hayley Pallan, Haviland Sheldahl-Thomason, George Chao, Daniel Ramos, Sang Hyu Hahn and Harald Kerschhofer provided great research assistance. Cuñat and Fadinger gratefully acknowledge the hospitality of CREI. Fadinger and Liu gratefully acknowledge financial support by the DFG (grant FA 1411/1-1 and CRC TR 224). Liu also gratefully acknowledges financial support from the European Research Council through grant no. 313623.

[†]Email: lalfaro@hbs.edu.

[‡]Email: alejandro.cunat@univie.ac.at.

[§]Email: harald.fadinger@uni-mannheim.de.

[¶]Email: yanping.liu@uni-mannheim.de.

1 Introduction

This paper looks into the link between real exchange rate (hereafter RER) changes and firm-level productivity growth. A number of policy debates have renewed the interest in the effects of RER movements on manufacturing activity (e.g. the experience of China’s export-led industrialization strategy is often regarded as based on an undervalued real exchange rate).¹ Real appreciations and their effects are also at the center stage of concerns over the effects of large capital inflows associated to the quantitative-easing policies implemented in the aftermath of the global financial crisis.² Finally, the idea of governments defining interventionist industrial policies has ceased to be taboo even in the political debate of market-friendly countries. RER changes, for example, can produce effects comparable to those of the combination of import tariffs and export subsidies and are not constrained by the WTO.³

On the academic side, the empirical evidence regarding the effects of RER changes on economic activity is far from conclusive. On the one hand, there is some evidence that RER depreciations are associated with more manufacturing activity and faster economic growth in developing countries (Rodrik, 2008). This has been rationalized theoretically with sizable market imperfections specific to traded goods, in particular manufacturing exports. (See Rodrik, 2008, Benigno and Fornaro, 2012, and references therein).⁴ However, precise evidence on the channels through which this positive effect operates remains elusive and is hard to obtain.⁵ On the other hand, there is ample micro-level evidence of substantial productivity gains from importing intermediates goods (Amiti and Konings, 2007; Halpern et al., 2015). RER depreciations increase the cost of importing them and are associated with aggregate productivity losses (Gopinath and Neiman, 2014).⁶ Finally, nowadays manufacturing production is based to a great extent on global value chains, which imply that firms simultaneously import intermediates and export their output; at the same time, the degree of firms integration into these global value chains varies across regions (Baldwin, 2016). All of this suggests a more nuanced view of the impact of RER fluctuations on manufacturing activity and productivity.

This paper revisits this question by studying the effects of medium-term fluctuations in the RER on firm-level productivity growth, export and import decisions, and innovation using micro data for for many countries. Our approach combines both empirical and theoretical work: after establishing a set of stylized facts, we explore a number of mechanisms and their implications by structurally estimating a dynamic model of R&D choice, exporting and importing with which we run a series of

¹See Rodrik (2008). S. Korea’s industrialization is also understood as partly based on an undervalued real exchange rate (Eichengreen, 2008).

²Policymakers in emerging markets have expressed concerns that large capital inflows can bring about the appreciation of their RERs and a corresponding loss of competitiveness in manufacturing. The use of reserve accumulation and capital controls has been suggested to limit exchange rate appreciations. (See Alfaro et al., 2017, Benigno et al., 2016, and Magud et al., 2011 for a discussion.) In rich countries, worries about appreciated RERs and their impact on economic activity, mainly in the manufacturing industry, have made recent headlines.

³Barattieri et al. (2017), for example, analyze macro-level effects of recent trade policy, in particular anti-dumping.

⁴For example, given the traded nature of manufactures, a RER depreciation can be understood as a subsidy that remedies the under-provision of manufacturing output through an increase in exports, as in Benigno and Fornaro (2012).

⁵Henry (2008) and Woodford (2008) raise a number of empirical issues regarding this macro-level evidence (omitted variables, reverse causality, etc.).

⁶For related evidence focusing on investment, see Brito, Magud, and Sosa (2018).

counterfactuals. We provide a detailed picture of the effects of RER changes on economic activity and, at the same time, shed light on the precise mechanisms underlying this relationship. We pay especial attention to the possibility that RER changes have diverse effects across regions where firms are integrated into global value chains to different extents.

We use firm-level data from Orbis (Bureau van Dijk) for around 70 emerging economies and 20 industrialized countries for the period 2001-2010 to evaluate manufacturing firms' responses to changes in the RER.⁷ We complement the Orbis data with Worldbase (Dun and Bradstreet) and the World Bank's Exporter Dynamics Database. The former provides plant-level information on export and import activity and multinational status. The latter reports entry and exit rates into exporting computed from customs microdata covering the universe of export transactions for a large set of economies (Fernandes et al., 2016). We complete the analysis with evidence from China, Colombia, Hungary, and France, for which we have detailed administrative micro data. We take these countries as examples of the different regions of study.⁸

Four main findings – that are robust to different identification assumptions detailed in Section 5 – characterize the responses of firms in different regions to RER changes:⁹

- Manufacturing firms from emerging Asia experience positive average effects of real depreciations on their revenue productivity (TFPR) growth and R&D activity. Firms from other emerging countries (Eastern Europe and Latin America) experience instead negative average effects on these outcomes. Industrial-country firms do not react much to real depreciations.
- In all regions, exporting firms experience positive effects from real depreciations, whereas importing firms suffer negative effects.
- Firms from emerging Asia are much more export oriented (in terms of both the probability to export and the ratio of exports to sales) relative to their import orientation (in terms of both the probability to import and the ratio of imports to sales) than firms from other emerging countries. Industrial-country firms lie in between these two groups in this regard.
- RER depreciations increase exporters' internal cash flow and reduce it for importers. Moreover, firms' R&D activity is positively related to their cash-flow levels. This relationship is stronger in emerging markets than in industrialized countries.

These stylized facts are consistent with different productivity channels – seemingly contradictory – stressed in different strands of the literature. In line with the "development" literature, our paper shows that RER depreciations increase exports and solve a market failure by enabling certain firms to relax

⁷Previous evidence based on firm-level studies, discussed below, is relatively scarce. Here, data availability for a wide range of countries including emerging economies has been an obvious constraint, limiting the analysis of firm-level mechanisms and their aggregate implications.

⁸We also use complementary evidence from the Worldbank's World Enterprise Survey, which covers a broad sample countries.

⁹To tackle issues of endogeneity, we consider (i) controls for aggregate supply and demand shocks, (ii) an instrumental variable approach, (iii) trade-weighted real exchange rates and country-year fixed effects that absorb aggregate shocks and (iv) differential effects of RER changes on exporters and importer and country-sector-year fixed effects.

financial constraints that prevent them from investing in innovation (R&D activity). As argued by the "international" literature, depending on their (trade/financial) integration into the world economy, different firms and regions can experience disparate gains, in magnitude and sign, from similar changes in the RER.¹⁰

With these stylized facts in mind, we develop a dynamic model in which changes in productivity are not the result of externalities but of firms' deliberate decisions. In particular, we model R&D investment by heterogeneous firms that can also choose to export their output and to import intermediate inputs. Since R&D investments are large, sunk, and intangible, they are hard to finance from external sources: credit-constrained firms use their profits as a source of funding for their innovation activities. RER depreciations have different effects on firms' profits according to their trade status: they raise sales and profits of exporters, and reduce them for firms that import inputs, as their costs rise. (For firms engaging in both activities, the net effect on profits depends on their export intensity relative to their import intensity.) Because real exchange rate fluctuations are persistent, both current profits and the net present value of innovation are affected. Subsequently, net exporting firms' R&D activities are enhanced by RER depreciations, whereas net importing firms reduce their R&D during depreciations.

In this context, the structural model also helps us disentangle different effects of RER depreciations that contribute to growth in measured firm-level TFPR: (i) transitory export demand effects; (ii) transitory productivity effects due to changes in firm-level imports; and (iii) persistent physical productivity effects due to innovation.¹¹

We then structurally estimate the model for each region using an indirect-inference procedure. We match reduced-form regression coefficients of the impact of RER changes on firm-level outcomes¹² as well as a number of additional firm-level statistics, such as cross-regional differences in firms' export and import orientation, innovation decisions and the firm-size distribution.

We find that real depreciations have the largest positive effects on revenue-based and physical productivity growth in emerging Asia, where firms display a high relative export orientation. In this region, the additional demand for exports dominates the negative effect on TFPR operating via the higher costs of imported intermediates. Thus, firm-level profitability increases on average. This induces additional firms to engage in R&D and leads to faster physical TFP growth. By contrast, negative effects are found for other emerging markets (Latin America and Eastern Europe), which are not particularly export oriented and rely heavily on imported intermediates. Finally, negative and positive effects of real depreciations tend to offset each other in industrialized economies.

¹⁰In fact, negative effects are consistent with Diaz Alejandro's (1965) early characterization of the effects of RER movements in Latin America, where "the existing manufacturing sector generally takes a dim view of exchange rate devaluations and fears such policy."

¹¹Our analysis is silent on a number of questions. First, we take RER movements as given and do not attempt to explain how they come about. Second, we do not provide a welfare analysis weighing benefits and costs of RER depreciations. Among the latter, for example, one should consider the costs of reserve accumulation, inflation, financial repression, tensions among countries, etc. (See Woodford, 2008, and Henry, 2008.)

¹²The reduced-form regressions difference out confounding factors that may impact on firm-level outcomes, such as aggregate supply or demand shocks to the manufacturing sector, which are absent from the structural model. We thus match conditional correlations that are fully consistent with our structural model.

We then quantitatively evaluate the different mechanisms by providing counterfactual simulations of temporary RER movements. Several key results emerge here.

First, even relatively short-lived (temporary) real depreciations can trigger sizable (positive or negative) long-run impacts on innovation and productivity growth because the evolution of physical TFP is very persistent. In emerging Asia, a 25-percent real depreciation over a five-year period (corresponding to one standard deviation of RER changes) raises average firm-level TFPR growth by up to 7 and physical TFP growth by up to 0.5 percentage points. By contrast, in the other emerging economies, the same depreciation reduces TFPR growth by around 3 and physical TFP growth by up to 0.3 percentage points. Finally, the average industrialized-country firm does not react significantly to such a shock.

Second, the effects of real depreciations and appreciations are asymmetric, as first discussed by the hysteresis literature (Baldwin, 1988, Baldwin and Krugman, 1989, and Dixit, 1989). In the case of emerging Asia, for example, the negative impact of a real appreciation on TFPR and physical TFP growth is roughly a third of the size of the positive effect of a real depreciation of the same magnitude. In other emerging markets, the positive impact of an appreciation on productivity is instead more than twice as large as the negative impact of a depreciation of identical magnitude. These regional asymmetries are due to the heterogeneous impact of depreciations on average firm-level profitability and the corresponding changes in the option value of engaging in R&D: firms' innovation responses to a positive profitability shock are larger than to a negative one because of sunk costs. These differences across regions also find support in our reduced-form evidence.

Third, the quantitative effects of depreciations are non-linear: for emerging Asia, doubling the magnitude of a depreciation leads to (positive) effects on firm-level outcomes that are more than double in magnitude. In other emerging markets instead, the (negative) impact of a larger depreciation is comparatively smaller in proportional terms than the impact of a depreciation of half the size. These non-linearities are explained by the substitution effects between domestic and imported inputs. These cushion the impact of larger depreciations on import costs in emerging Asia and boost the impact of larger appreciations in other emerging economies.

We conduct several robustness checks. First, we introduce export sunk costs into the model, which have been shown to be quantitatively important for export responses to RER fluctuations (see, e.g., Alessandria and Choi, 2007). We find that our results are robust to this feature and that the firm-level effects of RER changes are qualitatively unchanged. In comparison with our main model, the impact of a depreciation on firm outcomes is a bit less positive for emerging Asia and more negative for the other emerging economies because in the presence of export sunk costs exports are less responsive to changes in the RER. Second, we look into the valuation effects associated with changes in the RER. This "balance-sheet channel" may be relevant as devaluations raise the domestic value of debt for firms that issue unhedged foreign-denominated liabilities.¹³ In terms of foreign currency debt, data on currency

¹³A vast literature has analyzed the effects of the balance-sheet channel. For theoretical work, see Céspedes et al. (2004) and references therein; Salomão and Varela (2017) develop a firm-dynamics model with endogenous currency-debt composition using data for Hungary. Kohn et al. (2017) study the impact of financial frictions and balance-sheet effects on aggregate exports.

composition and hedging for a wide range of countries is not easily available. We complement our analysis with information on currency denomination of foreign debt from the World Bank Enterprise survey and national sources.¹⁴ We uncover that Eastern European and Latin American firms are more exposed to foreign-currency debt than firms from emerging Asia. Moreover, exporters borrow more in foreign currency compared to other firms. We then extend our structural model to account for a simple form of valuation effects. We show that for the empirically observed foreign-debt shares and the magnitude of RER fluctuations in the data, the qualitative and quantitative implications of our simulated model are similar: exporting and importing continue to be the dominating factors through which RER movements affect firm-level innovation decisions and TFP growth.

A number of policy-relevant conclusions arise from these results. First, as opposed to conventional analysis, the effects of RER fluctuations on the manufacturing sector depend on the average firm's export and import participation. Hence, cross-country differences in the degree of firms' integration into global value chains are a key factor in our understanding of the implications of real depreciations. Second, as global value chains evolve, or the degree of integration of a country's firms into them changes, the effects of RER fluctuations might change over time. Finally, a deeper integration of firms into global value chains that makes them both export their output and import intermediates is likely to reduce the effectiveness of real exchange rate manipulation as a policy tool, as effects operating in opposite directions will cancel each other out, as is already the case for industrial-country firms.

In addition to the literature mentioned above on the real effects of RER movements, our findings relate to research based on firm-level data studying the link between trade, innovation, and productivity growth. Regarding the connection between exporting and innovation activity, Lileeva and Trefler (2010) and Bustos (2011) find that foreign tariffs reductions enhance firms' incentives to innovate and export. Aw et al. (2011) structurally estimate a dynamic framework to study the joint incentive to innovate and export for Taiwanese electronics manufacturers. Aghion et al. (2017) analyze the competition and market-size effects associated with trade shocks on innovation. As far as the relationship between imports and innovation is concerned, Bøler, Moxnes and Ulltveit-Moe (2015) provide evidence for complementarities between these decisions using a panel of Norwegian firms.¹⁵ None of these papers uses cross-country firm-level data or changes in the RER to identify changes in the incentives for innovation; furthermore, none takes into account the joint impact of exporting, imported intermediate inputs and financial constraints.

Regarding the link between imports and productivity, Amiti and Konings (2007) find substantial productivity gains from importing intermediates for Indonesian firms, while Halpern et al. (2015) structurally estimate these gains for Hungarian manufacturing firms. This result evokes the findings of Gopinath and Neimann (2014), who uncover large productivity losses due to reductions in imports at the product and firm level during the Argentine crisis that followed the collapse of the currency

¹⁴We cross-check the data with additional sources, as explained in the next section.

¹⁵Regarding the link between import competition and innovation, Bloom et al. (2015) uncover that European firms most affected by Chinese competition in their output markets increased their innovation activity. Autor et al. (2016) find instead that rising import competition from China has reduced the innovation activity of US firms.

board.¹⁶

Firm-level evidence from rich countries suggests a muted impact of real exchange rate movements on exports (Berman et al., 2012 for France; Amiti et al., 2014, for Belgium; Fitzgerald and Haller, 2014 for Ireland, among others). Ekholm et al. (2012) even find faster firm-level productivity growth in response to RER appreciation in Norway. This suggests that emerging markets display features that are very different from those of industrialized countries. In this regard, the stronger financial frictions that emerging markets are subject to are a natural point of departure for our research into the determinants of the effects of RER changes on firm-level behavior. The same applies to the stronger prevalence of importing intermediate inputs in industrialized countries, Latin America and Eastern Europe, in comparison with the export orientation of emerging Asia.

The relation between financial constraints and trade is explored by Manova (2013). She develops a static model of financial constraints and exporting in which fixed and variable costs of exporting have to be financed with internal cash flows. These financial constraints reduce exports at the extensive and the intensive margins. Gorodnichenko and Schnitzer (2013) also consider innovation activity in this context: they produce a static model in which exports and innovation are complementary activities for financially unconstrained firms, but might become substitutes when financial constraints are binding. Aghion et al. (2012) uncover that R&D activity becomes pro-cyclical for credit-constrained French firms in sectors dependent on external finance, whereas R&D is counter-cyclical for non-constrained firms in the same sectors. Finally, Midrigan and Xu (2014) use Korean producer-level data to evaluate the role of financial frictions in determining total factor productivity (TFP): they find that financial frictions distort entry and technology adoption decisions and generate dispersion in the returns to capital across existing producers, and thus productivity losses from mis-allocation. In line with this literature, our paper shows that RER depreciations affects financial constraints that prevent them from investing in R&D activity.

The rest of the paper is structured as follows. The next section presents our data and a number of stylized facts relating RER changes to firm-level behavior. This motivates the theoretical model we present in Section 3. Section 4 discusses how we estimate revenue total factor productivity (TFPR) and how our theoretical enables us to tease physical TFP from it. Section 5 presents our reduced-form evidence, which is part of the input we use in our indirect-inference estimation strategy, discussed in Section 6. Section 7 discusses the results of our structural estimation. In Section 8 we use our estimated model to run a number of counter-factual experiments and in Section 9 we report a number of extensions and robustness checks. Section 10 presents some concluding remarks.

¹⁶The role of imperfect substitution between foreign and domestic inputs has also been shown to be quantitatively important in explaining productivity losses in sovereign default episodes and, more generally, in explaining effects of large financial shocks. See Mendoza and Yue (2012) and references therein. Large devaluations in emerging markets have also been used to study exporting behavior. See Alessandria et al. (2010) and Burstein and Gopinath (2014) for an overview of the effects of large devaluations.

2 Data and Main Stylized Facts

2.1 Data and Sources

We combine several data sources.¹⁷ Our main data source is Orbis (Bureau Van Dijk), which provides information for listed and unlisted firms on sales, materials, capital stock (measured as total fixed assets), cash flow (all measured in domestic currency),¹⁸ employees, and R&D participation. Our sample spans the period 2001-2010: we have an unbalanced annual panel of firms in 76 emerging economies and 23 industrialized countries. Data coverage varies a lot across countries and the sample is not necessarily representative in all countries (see Table A-1, Panel A). We focus on manufacturing firms (US-SIC codes 200-399). The sample is selected according to the availability of the data necessary to construct TFPR (gross output, materials, capital stock and employees). It includes around 1,333,000 observations corresponding to around 495,000 firms (see Table A-1, Panel B for descriptive statistics). Worldbase (Dun and Bradstreet) provides plant-level information of production activities, export and import status and plant ownership for the same set of countries as Orbis.¹⁹ We use an algorithm to match firms in the two data sets based on company names. We use the export and import status in the first year the firm reports this information and are able to match around 177,000 firms. We also construct a dummy for the multinational status of a company for the same set of firms.

The World Bank's Exporter Dynamics Database reports entry rates into exporting by country for a large set of countries. These variables are computed from underlying customs micro data covering all export transactions (see Fernandes et al., 2016 for more details). We also use detailed administrative firm-level data on sales, exports and imports for China, Colombia, Hungary and France to compute statistics on export and import probabilities and intensities for these countries. Alternatively, we use representative firm-level data from the Worldbank's 2016 version of the World Enterprise Survey to obtain this information for emerging economies. In addition, we employ information on the fraction of manufacturing firms performing R&D by country from the OECD's Science, Technology and Innovation Scoreboard, which is based on representative survey data.

We obtain data on the exposure of firms to foreign-currency borrowing from various sources which we exploit in the robustness section. We use the 2002-2006 version of the World Enterprise Survey. This dataset has the advantage that it provides information for a wide range of countries included in our sample. For a subset of countries, we have more detailed data collected from Central Banks and the IADB research department.²⁰

As far as macro data is concerned, we use the real GDP growth rate from the Penn World Tables 8.0

¹⁷A detailed explanation of the datasets we use can be found in the Appendix.

¹⁸Cash flow is the difference in the amount of cash available at the beginning and end of a period.

¹⁹This data set is more comprehensive in terms of coverage than Orbis, providing the 4-digit SIC code of the primary industry in which each establishment operates, and SIC codes of as many as five secondary industries, basic operational information, such as sales, employment, export and import status, and ownership information to link plants within the same firm. However, it does not include the balance-sheet variables necessary to construct TFPR nor information on plants' R&D status.

²⁰We use data provided by the IADB databases compiled as part of the Research Network project Structure and Composition of Firms' Balance Sheets. For Colombia the data comes from Barajas et al. (2016), for Brazil, Valle et al. (2017) and Chile, Alvarez and Hansen (2017).

(PWT 8.0); compute inflation rates from GDP deflators as reported by the IMF; and take information on private credit/GDP by country from the World Bank’s Global Financial Development Database. We define the real exchange rate (RER) as $\log(e_{c,t}) = \log(1/P_{c,t})$, where $P_{c,t}$ is the price level of GDP in PPP (expenditure-based) from PWT 8.0 in country c in year t .²¹ This RER is defined relative to the U.S. An increase indicates a real depreciation of the currency (making exports cheaper and imports more expensive). We also construct export-weighted and import-weighted country-sector-specific RERs by combining country-level PPP deflators with bilateral sectoral export and import shares at the 3-digit US-SIC level (164 manufacturing sectors) from UN COMTRADE database. We define $\log(e_{sc,t}^{EXP}) \equiv \sum_{c'} w_{cc's0}^{EXP} \log(P_{c',t}/P_{c,t})$ and $\log(e_{sc,t}^{IMP}) \equiv \sum_{c'} w_{cc's0}^{IMP} \log(P_{c',t}/P_{c,t})$. $w_{cc's0}^{EXP}$ and $w_{cc's0}^{IMP}$ are the sector- s export share of country c to country c' and the import share of country c from country c' , respectively. Both shares are calculated for the first period of the sample.

2.2 Stylized Facts

In this section we present the main stylized facts that motivate the quantitative model and the structural estimation. More detailed reduced-form evidence and the regressions underlying the plots will be presented in Section 5, which also discusses our identification strategies in detail.

2.2.1 Revenue-based Productivity Growth and Real Depreciations

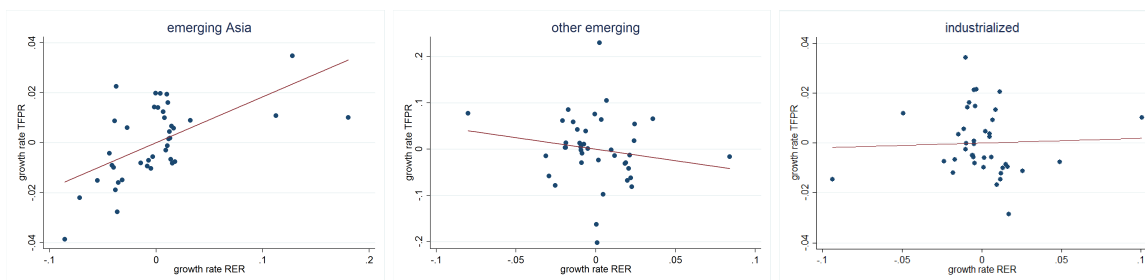
We first show that the correlation between the firm-level TFPR growth rate and the growth rate of the RER varies systematically across three macro regions: emerging Asia; other emerging economies; industrialized economies.²² The choice of these macro regions is based on the observed heterogeneity in the data. Figure 1 presents binned scatter plots of firm-level TFPR growth against the growth rate of the RER for each region. The binned scatter plots show means of annual firm-level TFPR growth rates computed for each percentile of this variable’s distribution plotted against means of the RER growth rate for each of its percentiles after partialing out country-sector and year fixed effects and business cycle controls.²³ For manufacturing firms from emerging Asia there is a significant positive association between real depreciations and TFPR growth, whereas for firms from other emerging economies (Eastern Europe and Latin America) the relationship is significantly negative. For industrial-country firms there is no significant correlation between the growth rate of the RER and firm-level TFPR growth.

²¹We obtain similar results using PPP from PWT 7.1. We prefer using version 8.0 since the accuracy of version 7.1 has recently been questioned (see Feenstra et al., 2015). However, since we use growth rates of RER rather than levels and the measurement problems are related to levels, our results are not affected by them. See Cavallo (2017) for an in-depth discussion.

²²The set of countries in each region and the corresponding numbers of observations, the descriptive statistics for firm-level variables and for the growth rate of the RER are listed in Table A-1, panels A-D.

²³We consider 40 bins of each variable. The plots are based on the regression specification (24) reported in section 5. The depicted regression lines are based on the underlying micro data and not on the plots. The corresponding regression results are reported in column 1 of Table 2. The sample includes around 1.33 million yearly observations corresponding to roughly 495,000 manufacturing firms for the period 2001-2010.

Figure 1: Firm-level TFPR growth and the real exchange rate growth rate. Binned scatter plots by region.



Notes: The figure depicts binned scatter plots of firm-level revenue-based productivity (TFPR) growth (vertical axis) and the annual real exchange rate (RER) growth rate (horizontal axis). The binned scatter plots show means of annual firm-level TFPR growth rates computed for each percentile of the distribution of this variable plotted against means of the RER growth rate for each of its percentiles. The plots are based on around 1.33 million yearly observations corresponding to roughly 495,000 manufacturing firms for the period 2001-2010. The binned scatter plots partial out country-sector and year fixed effects, the real GDP growth rate (from PWT 8.0) and the inflation rate (from IMF). The RER is computed as one over the price level of GDP in PPP from the Penn World Table 8.0. The construction of TFPR is explained in Section 4.1.

Stylized fact 1:

Firm-level TFPR growth and the RER growth rate are positively correlated in emerging Asia; negatively correlated in other emerging markets; uncorrelated in industrialized economies.

2.2.2 Productivity Growth and R&D by Firm-level Trade Status

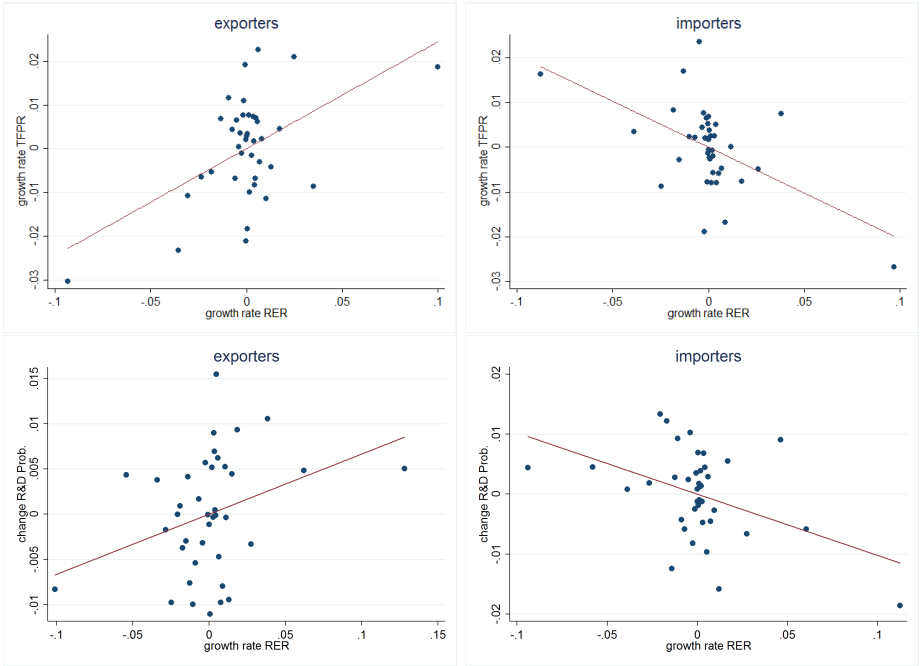
In the two top panels of Figure 2 we pool firms from emerging Asia and other emerging markets and present binned scatter plots of firm-level TFPR growth against the RER growth rate separately for exporters (left panel) and for importers (right panel).²⁴ We find a significantly positive relationship between TFPR growth and the RER growth rate for exporters, while the same relationship is negative for importers. In the bottom panels of Figure 2 we plot the change in the firm-level probability to engage in R&D on the vertical axis against the RER growth rate separately for exporters and importers. Again, there is a positive relationship between the change in the R&D probability and the RER growth rate for exporters and a negative one for importers.

Stylized fact 2:

Firm-level TFPR growth and changes in R&D probability are positively correlated with the RER growth rate for exporters, while being negatively correlated for importers.

²⁴The binned scatter plots are based on regression specification (26) presented in Section 5 and reported in Table 3. They partial out country-sector-year fixed effects, firms' export, import and multinational status and the RER growth rate interacted with the other trade status categories (i.e., import and multinational status for exporters).

Figure 2: Firm-level TFPR growth and changes in R&D probability against the growth rate of the real exchange rate by trade status.



Notes: The figure depicts binned scatter plots of firm-level revenue-based productivity (TFPR) growth (top panels) and changes in R&D probabilities (bottom panels) against the annual real exchange rate (RER) growth rate separately for exporters and importers from emerging markets. The binned scatter plots show means of annual firm-level TFPR growth rates and changes in R&D probability computed for each percentile of the distribution of these variables plotted against means of the RER growth rate for each of its percentiles. The binned scatter plots partial out country-sector-year fixed effects, trade and multinational status and the RER growth rate interacted with the other trade status categories. The RER is computed as one over the price level of GDP in PPP from the Penn World Table 8.0. The construction of TFPR is explained in Section 4.1.

2.2.3 Export and Import Orientation

The regional heterogeneity in the relationship between TFPR growth and RER growth begs for some explanation. In comparison with firms from emerging Asia, which are intensive in exports relative to imports, firms in other emerging economies (Latin America and Eastern Europe) are relatively import intensive. Finally, firms in industrialized countries have intermediate degrees of export and import participation.

Table 1 provides evidence for differences in export and import orientation. It reports firm-level import and export probabilities and intensities (imports/sales for importers; exports/sales for exporters) based on representative micro data sets for four countries for which we have detailed administrative firm-level data available: China, Colombia, Hungary, and France.²⁵ We find that firms in China, representative for emerging Asia, have a high relative export orientation compared to firms from the other countries (for Chinese firms the export probability divided by the import probability is 1.53, whereas the firms' average export intensity divided by the corresponding import intensity is 4.62) while firms from Colombia (0.82 and 0.71) and Hungary (0.90 and 0.42), representative for the other emerging economies, have a low relative export orientation. Firms in France (1.15 and 1.64), representative for industrialized countries, have intermediate relative export propensities and intensities.²⁶ In Appendix Table A-6 we compute the same statistics for emerging Asia and other emerging economies from the Worldbank's 2016 Enterprise Survey. This dataset includes a much larger sample of countries in these regions. We find extremely similar numbers, thus confirming the representativeness of the four countries for their respective regions.²⁷

Stylized fact 3:

Firms located in Emerging Asia have a high relative export orientation; firms located in other emerging markets have a low relative export orientation; firms located in industrialized countries have an intermediate relative export orientation.

²⁵The numbers for China have been computed by the authors from representative plant-level administrative data; information for Colombia is also from administrative data (we thank Norbert Czinkan for sharing this information with us); data for Hungary are from Halpern et al, 2015; data for France are from Blaum et al, 2015. The analysis considers that many firms are exporters and importers.

²⁶Defever and Riaño (2017) document similar evidence for a broader sample of countries.

²⁷The Worldbank's Enterprise Survey does not cover most industrialized countries. We also performed complementary analysis on regional differences in import and export propensity for the full set of countries in each region using information from Worldbase, which reports export and import status by plant. We analyzed import and export probabilities by plant-size bin (small (≤ 50 employees), medium (50-200 employees), large (≥ 200 employees) and region (Emerging Asia, other emerging, industrialized) for the years 2000, 2005 and 2009. Results from Worldbase confirm the higher relative export orientation of emerging Asia: its export propensity is slightly lower than in the other regions, but its plants are much less likely to import than plants in the other regions.

Table 1: Evidence on import and export propensity/intensity of manufacturing firms

(Computed from representative micro data)				
	China	Colombia	Hungary	France
Export prob.	0.26	0.37	0.35	0.23
Import prob.	0.17	0.45	0.39	0.20
Relative export prob.	1.53	0.82	0.90	1.15
Avg. export intensity (exporters)	0.6	0.10	0.10	0.23
Avg. import intensity (importers)	0.13	0.14	0.24	0.14
Relative export intensity	4.62	0.71	0.42	1.64

Data Sources: China: computed from administrative data; Colombia: computed from administrative data; Hungary: Halpern et al, 2015; France: Blaum et al, 2015.

2.2.4 Credit Constraints, Cash flow and R&D

Finally, we provide evidence for the connection between real depreciations and firms' internal cash flow and establish the link between cash flow and firm-level innovation. The top panels of Figure 3 depict binned scatter plots of the growth rate of firm-level cash flow against the RER growth rate separately for exporters (left panel) and importers (right panel) from emerging markets.²⁸ There is a positive partial correlation between the cash-flow growth rate and the RER growth rate for exporters, while the same correlation is negative for importers. Thus, a depreciation increases exporters' cash flow, while reducing it for importers. In the two bottom panels of Figure 3 we show binned scatter plots of firms' R&D probability against their (log) cash flow. We provide separate plots for firms from emerging markets (left panel) and firms from industrialized countries.²⁹ The correlation between cash flow and the probability to engage in innovation is positive for all firms, but the relationship is stronger for emerging-market firms compared to firms located in industrialized economies.

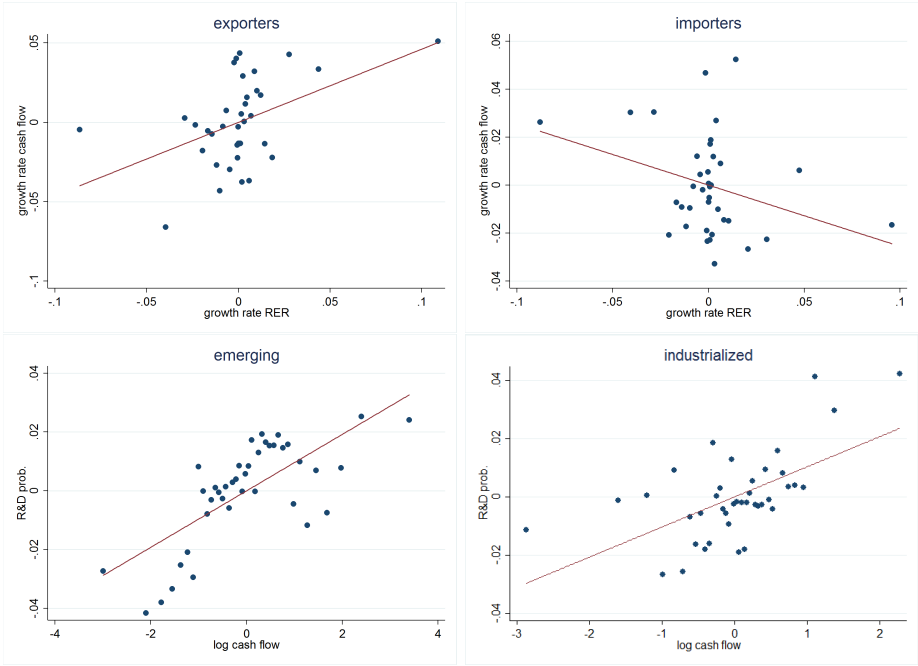
Stylized fact 4:

The growth rate of firm-level cash flow is positively correlated with the RER growth rate for exporters, while the same correlation is negative for importers. Moreover, cash flow is positively correlated with R&D, in particular in emerging economies.

²⁸The binned scatter plots are based on regression specification (26) presented in Section 5 and reported in Table 3. They partial out country-sector-year fixed effects, firms export, import and multinational status and the RER growth rate interacted with the other trade status categories (e.g., import and multinational status for exporters).

²⁹The binned scatter plots partial out firms' employment and capital stock, business cycle controls, country-sector and year fixed effects.

Figure 3: Firm-level cash flow growth against the growth rate of the real exchange rate by trade status (top panels)/ firm-level R&D probability against log cash flow for emerging markets and industrialized countries (bottom panels).



Notes: The top panels of the figure depict binned scatter plots of the annual growth rate of firm-level cash flow against the real exchange rate (RER) growth rate separately for exporters and importers from emerging markets. The bottom panels show binned scatter plots of the firm-level R&D probability against log cash flow for firms from emerging markets (left panel) and industrialized countries (right panel). In the top panel, the binned scatter plots partial out country-sector-year fixed effects, trade and multinational status and the RER growth rate interacted with the other trade status categories. The bottom panels partial out firm-level employment, capital stock, sector-country and year fixed effects and business cycle controls. The RER is computed as one over the price level of GDP in PPP from the Penn World Table 8.0.

3 Theoretical Framework

Motivated by this empirical evidence, we build a model with heterogeneous firms that choose whether or not to invest in R&D, which in turn affects their future productivity. The model focuses on the manufacturing sector, which is our object of empirical analysis. We adopt a small-open-economy approach in which aggregate variables are given. Since R&D is an intangible investment that cannot be used as collateral easily, borrowing constraints are key: only firms with sufficiently large cash flow can finance the fixed sunk costs involved in R&D activity. Domestic firms self-select into exporting their output and/or importing materials. RER fluctuations change the profitability of these activities, as well as cash flow and the net present value of innovation and affect thereby firms' behavior.

3.1 The Real Exchange Rate

We think of the RER as the price of a country's consumption basket relative to that of the rest of the world. In the Appendix, we model its fluctuations in a Balassa-Samuelson way: productivity increases in a freely traded numéraire sector lead to higher prices in the rest of the economy (manufacturing and non-tradables); this brings about an RER appreciation, making exportables more expensive and importables cheaper.

The logarithm of the cost-shifter (inverse of productivity) in the numéraire sector follows an AR(1) process:

$$\log(e_t) = \gamma_0 + \gamma_1 \log(e_{t-1}) + \nu_t, \quad \nu_t \sim N(0, \sigma_\nu^2). \quad (1)$$

We impose enough structure so that the (log) real exchange rate $\log(P_t^*/P_t) \approx \log(e_t)$: a higher e_t leads to lower factor prices and thereby a real depreciation.

3.2 Preferences and Technologies

There is a continuum of differentiated varieties of manufacturing goods. Consumers have the following preferences over manufacturing varieties i ,

$$D_{T,t} = \left(\int_{i \in \Omega_T} d_{i,t}^{\frac{\sigma-1}{\sigma}} di + \int_{i \in \Omega_T^*} d_{i,t}^{\frac{\sigma-1}{\sigma}} di \right)^{\frac{\sigma}{\sigma-1}}. \quad (2)$$

Ω_T and Ω_T^* denote the sets of domestically produced and imported varieties, respectively, which are given.³⁰ We take aggregate variables as exogenous. Since each variety is associated with a different producer, the number of firms equals the number of varieties. Firms are infinitely lived and heterogeneous in terms of log-productivity ω_{it} , which follows a Markov process defined below and is realized before firms make decisions in each period.

³⁰We do not allow firms to enter or exit the manufacturing sector since in our data we do not observe these decisions.

Each firm produces a single variety of the manufacturing good using technology:

$$Y_{i,t} = \exp(\omega_{i,t}) K_{i,t}^{\beta_k} L_{i,t}^{\beta_l} M_{i,t}^{\beta_m}. \quad (3)$$

$K_{i,t}$, $L_{i,t}$, and $M_{i,t}$ denote the amount of capital, labor and materials, respectively, employed by firm i .

3.3 Imports

We assume that manufacturing firms can use domestic and imported intermediates, which are imperfect substitutes with elasticity of substitution ε :

$$M_{i,t} = \left[(B^* X_{i,t}^*)^{\frac{\varepsilon}{\varepsilon-1}} + X_{i,t}^{\frac{\varepsilon}{\varepsilon-1}} \right]^{\frac{\varepsilon-1}{\varepsilon}}. \quad (4)$$

$X_{i,t}$ is the quantity of domestically produced intermediates used by firm i ; $X_{i,t}^*$ is the quantity of imported intermediate inputs.³¹ B^* is a quality shifter that allows imported intermediates to be of a quality different from that of domestic intermediates. In case a firm decides to import foreign inputs, the price index of intermediates is

$$P_{M,t} = P_{X,t} \exp[-\tilde{a}_t(e_t)], \quad (5)$$

where $P_{X,t}$ is the price of domestically produced intermediates and $\tilde{a}_t(e_t) = (\varepsilon - 1)^{-1} \ln \left[1 + (A_t e_t^{-1})^{\varepsilon-1} \right]$ is the cost reduction from importing that results from a combination of relative price, quality and imperfect substitution. ($A_t \equiv B^*/P_{X,t}^*$ is the quality-adjusted relative cost of imported intermediates.) It is easy to show that the elasticity of $\exp[-\tilde{a}(e)]$ with respect to e is positive: a depreciation raises the relative price of imported intermediates $P_{X,t}^*/P_{X,t}$ and the price of materials for importing relative to non-importing firms, for which $P_{M,t} = P_{X,t}$. Moreover, this elasticity depends negatively on ε : substitution of domestic intermediates for foreign intermediates makes the response of $P_{M,t}/P_{X,t}$ to depreciations more muted the larger these are.

Materials expenditure $\tilde{M}_t \equiv P_{M,t} M_t$ can be written as $\tilde{M}_t = P_{X,t} \exp[-\tilde{a}_t(e_t)] M_t$. Substituting this into the production function and taking logs, and using $z \equiv \log Z$, $Z = K, L, \tilde{M}$,

$$y_{i,t} = \beta_0 + \beta_k k_{i,t} + \beta_l l_{i,t} + \beta_m \tilde{m}_{i,t} - \beta_m \log(P_{X,t}) + \beta_m \tilde{a}_{i,t}(e_t) + \omega_{i,t}. \quad (6)$$

The term $\beta_m \tilde{a}_{i,t}(e_t)$ captures the productivity gains from importing intermediates. In case the firm does not import, the term $\beta_m \tilde{a}_{i,t}(e_t)$ disappears from the corresponding expression for the production function. We discuss the choice to import intermediates below.

³¹See Halpern et al. (2015).

3.4 Demand

Given preferences (2), demand faced by firm i is

$$d_{i,t} = (p_{i,t}/P_{T,t})^{-\sigma} D_{T,t} \text{ and } d_{i,t}^* = (p_{i,t}/P_{T,t}^*)^{-\sigma} D_{T,t}^*. \quad (7)$$

Here, $d_{i,t}$ is the domestic demand and $d_{i,t}^*$ is foreign demand faced by firm i ; $p_{i,t}$ is the price charged by firm i . $P_{T,t}$ is the price index of the manufacturing sector; $D_{T,t}$ is demand for the CES aggregate by domestic consumers. Both taken as given by firms. The mass of foreign firms Ω_T^* , foreign demand $D_{T,t}^*$ and the foreign price level $P_{T,t}^*$ are also given. Firms behave as monopolists and charge a constant mark-up over their marginal production costs.³² Firm i 's domestic revenue is

$$R_{i,t}^d = p_{i,t}^{1-\sigma} P_{T,t}^{\sigma-1} (P_{T,t} D_{T,t}). \quad (8)$$

As shown in the Appendix, non-importing (NI) firms face factor costs proportional to e^{-1} . By substituting the optimal price into (8) we get:

$$R_{i,t}^d(\omega_{i,t}) = \left(\frac{\sigma}{\sigma-1}\right)^{1-\sigma} \exp[(\sigma-1)\omega_{i,t}] e_t^{\sigma-1} P_{T,t}^{\sigma-1} (P_{T,t} D_{T,t}). \quad (9)$$

Variable domestic profits are given by $\Pi_{i,t}^d = R_{i,t}^d/\sigma$. Notice that e_t affects $R_{i,t}^d$ by (i) impacting on the marginal cost faced by the firm and thereby the price $p_{i,t}$ it charges, and (ii) by shifting the domestic aggregate price level in manufacturing $P_{T,t}$. Both effects are proportional to e_t^{-1} and cancel out. (See the Appendix). Thus, conditional on aggregate expenditure on manufacturing ($P_{T,t} D_{T,t}$), e_t has no effect on $R_{i,t}^d$ and $\Pi_{i,t}^d$. By contrast, in the case of importing (I) firms, e_t has an additional negative effect on revenue (and profits) through the effect of the price of imported intermediates on the price these firms charge:

$$R_{i,t}^d(\omega_{i,t}) = \left(\frac{\sigma}{\sigma-1}\right)^{1-\sigma} \exp[(\sigma-1)\omega_{i,t}] e_t^{\sigma-1} \exp[-\tilde{a}_t(e_t)]^{(1-\sigma)\beta_m} P_{T,t}^{\sigma-1} (P_{T,t} D_{T,t}). \quad (10)$$

Hence, a real depreciation reduces the domestic revenue and profits of importers. These profit reductions are proportionally smaller for larger depreciations, due to the fact that the elasticity of $\exp[-\tilde{a}(e)]$ with respect to e depends negatively on e : substitution of domestic intermediates for foreign intermediates makes the response of $P_{M,t}/P_{X,t}$ to depreciations more muted the larger these are.

³²The price charged by non-importing firms is $p_{i,t}(\omega_{i,t}, e_t) = e_t^{-1} \frac{\sigma}{\sigma-1} \exp(-\omega_{i,t})$. Importing firms charge $p_{i,t}(\omega_{i,t}, e_t) = e_t^{-1} \exp[-\tilde{a}_t(e_t)]^{\beta_m} \frac{\sigma}{\sigma-1} \exp(-\omega_{i,t})$.

3.5 Exports

If a firm with log-productivity level ω_{it} chooses to export, its export revenue is

$$R_{i,t}^x = p_{i,t}^{1-\sigma} (P_{T,t}^*)^{\sigma-1} (P_{T,t}^* D_{T,t}^*). \quad (11)$$

For non-importing (*NI*) firms,

$$R_{i,t}^x(\omega_{i,t}) = \left(\frac{\sigma}{\sigma-1} \right)^{1-\sigma} \exp[(\sigma-1)\omega_{i,t}] e_t^{\sigma-1} (P_{T,t}^*)^{\sigma-1} (P_{T,t}^* D_{T,t}^*). \quad (12)$$

Variable export profits are $\Pi_{i,t}^x = R_{i,t}^x/\sigma$. Changes in e_t affect export revenues and profits by impacting on a firm's marginal cost. A real depreciation reduces domestic factor costs, thereby reducing export prices and increasing sales and profits in the export market.³³ (The foreign price level $P_{T,t}^*$ is unaffected by the shift in e_t .) This effect is smaller for exporters that also import (*I*), since a real depreciation makes imports of intermediate inputs more expensive.³⁴

3.6 Exporter and Importer Status

Importing and exporting decisions involve per-period fixed costs f_m and f_x , respectively.³⁵ Each firm's fixed costs are i.i.d. random draws. More productive firms self-select into one or both of these activities. The resulting decisions are static choices. Moreover, they are complements: each activity raises the gain from the other. Export and import decisions are made after $\omega_{i,t}$ is realized.

Firm i chooses one among four different "regimes", which characterize the following per-period profit function:

$$\Pi_{i,t}(\omega_{i,t}) = \max \left[\Pi_{i,t}^{(x,m)}(\omega_{i,t}) - f_x - f_m, \Pi_{i,t}^{(x,0)}(\omega_{i,t}) - f_x, \Pi_{i,t}^{(0,m)}(\omega_{i,t}) - f_m, \Pi_{i,t}^{(0,0)}(\omega_{i,t}) \right], \quad (13)$$

where $\Pi_{i,t}^{x,m}(\omega_{i,t}) = \Pi_{i,t}^d[\omega_{i,t}, \exp[-\tilde{a}_t(e_t)]] + \Pi_{i,t}^x[\omega_{i,t}, e_t, \exp[-\tilde{a}_t(e_t)]]$ are the profits of a firm that both exports and imports; $\Pi_{i,t}^{(x,0)}(\omega_{i,t}) = \Pi_{i,t}^d(\omega_{i,t}) + \Pi_{i,t}^x(\omega_{i,t}, e_t)$ are the profits of an exporting firm that does not import materials; $\Pi_{i,t}^{(0,m)}(\omega_{i,t}) = \Pi_{i,t}^d[\omega_{i,t}, \exp[-\tilde{a}_t(e_t)]]$ are the profits of an importing non-exporter; and $\Pi_{i,t}^{(0,0)}(\omega_{i,t}) = \Pi_{i,t}^d(\omega_{i,t}) > 0$ are the profits of a firm that neither exports nor imports. Notice that firms that choose to export and/or import can always finance the corresponding fixed costs with their profits.

³³Our model assumes that exports are invoiced in the exporting country's currency. If they were invoiced in a foreign currency, a depreciation would still lead to a larger amount of profits in domestic currency for the exporting firm by increasing the domestic-currency value of export revenue for a given amount of export revenue. Qualitatively, this leads to the same impact of RER movements on export decisions and the dynamic choice of R&D.

³⁴As in the case of domestic sales, export revenues and profits of importers and non-importers differ by term $\exp[-\tilde{a}_t(e_t)]^{(1-\sigma)\beta m}$. Again due to the fact that the elasticity of $\exp[-\tilde{a}(e)]$ with respect to e depends negatively on e , the difference in the performance of importing and non-importing exporters becomes proportionally smaller with larger depreciations.

³⁵Unlike with the R&D decision, we assume no one-time sunk cost is required for either of these two activities. We consider a model with export sunk costs in an extension, discussed in Section 9 below.

3.7 Dynamic Choice of R&D

Unlike the static export and import choices, the R&D choice is dynamic due to both the existence of fixed and sunk costs and its impact on productivity, which is persistent. Innovation increases productivity, but is subject to sunk costs $f_{RD,0}$ in the period the firm starts innovating and fixed costs f_{RD} in other periods in which it innovates. We follow Aw et al. (2011) and assume that log-productivity $\omega_{i,t}$ follows the following Markov process

$$\omega_{i,t} = \alpha_0 + \alpha_1 \omega_{i,t-1} + \alpha_2 I_{iRD,t-1} + u_{i,t}, \quad u_{i,t} \sim N(0, \sigma_u^2). \quad (14)$$

$I_{iRD,t-1}$ is an indicator variable for innovation in $t-1$ and α_2 is the short-run log-productivity return to innovation. Under $|\alpha_1| < 1$, the stochastic process is stationary and the model does not produce any long-run productivity trends. A firm that always engages in R&D has expected log-productivity $E(\omega_{i,t} | I_{iRD,t} = 1 \quad \forall t) = \frac{\alpha_0 + \alpha_2}{1 - \alpha_1}$, whereas a firm that never does R&D has expected log-productivity $E(\omega_{i,t} | I_{iRD,t} = 0 \quad \forall t) = \frac{\alpha_0}{1 - \alpha_1}$.

We model credit constraints by assuming that in each period the sum of all sunk and fixed costs cannot go beyond a proportion θ of current period's cash flow:

$$I_{iRD,t} [f_{RD,0} (1 - I_{iRD,t-1}) + f_{RD} I_{iRD,t-1}] \leq \theta \epsilon_{i,t} \Pi_{i,t} (\omega_{i,t}, e_t). \quad (15)$$

Parameter $\theta \in [1, \bar{\theta}]$ reflects the quality of the financial system: the lower θ , the more financially constrained the firms. $\epsilon_{i,t}$ is an i.i.d. shock that affects cash flow and thereby the amount that can be borrowed to finance R&D, but not the profit and value of doing R&D. It is distributed lognormal: $\ln(\epsilon) \sim N(0, 1)$.³⁶

As in Manova (2013), firms do not have any savings from past cash flows or profits and they rent whatever physical they use. Therefore they cannot pledge any assets as collateral.³⁷ In order to avoid moral-hazard problems, lenders expect borrowing firms to have some "skin in the game" by financing a fraction of the investment themselves (that is, a down-payment).³⁸ The more important the moral-hazard problems, the lower θ , which implies that a larger fraction of the project must be financed out of firm's cash flow.

To sum up, firms maximize

$$\mathbb{E}_0 \sum_{t=0}^{\infty} (1+r)^{-t} \{ \Pi_{i,t} - I_{iRD,t} [f_{RD,0} (1 - I_{iRD,t-1}) + f_{RD} I_{iRD,t-1}] \} \quad (16)$$

s.t. (1), (13), (14), (15).³⁹ This objective function can be derived by maximizing the value of the firm

³⁶This shock breaks the perfect correlation between profits and cash flow in the model. This feature enables us to match some data moments better further below.

³⁷In Manova (2013), firms cannot use profits from past periods to finance future operations: in the absence of debt they have to distribute all profits to shareholders due to (unmodeled) principal-agent problems; in the presence of outstanding debts they use all profits for repayment.

³⁸Alternatively, one could assume that a constant fraction of profits goes to dividends and the rest to debt repayment.

³⁹Discounting with the riskless interest rate r implicitly assumes that firm owners are risk neutral or able to diversify

given an initial debt level $B_{i,0}$, the budget constraint

$$\begin{aligned} B_{i,t+1} + \Pi_{i,t} &= I_{iRD,t} [f_{RD,0} (1 - I_{iRD,t-1}) + f_{RD} I_{iRD,t-1}] + (1+r) B_{i,t}, \text{ for } B_{i,t} > 0, \\ \Pi_{i,t} - I_{iRD,t} [f_{RD,0} (1 - I_{iRD,t-1}) + f_{RD} I_{iRD,t-1}] &= \text{dividends}_{i,t}, \text{ for } B_{i,t} = 0, \end{aligned} \quad (17)$$

the credit constraint (15) and the condition $\lim_{t \rightarrow \infty} B_{i,t} / (1+r)^t \leq 0$. The current state for firm i in year t is given by the vector $s_{i,t} = (\omega_{i,t}, e_t, I_{iRD,t-1})$. The firm's value function is then

$$\begin{aligned} V_{i,t}(s_{i,t}) &= \\ &\mathbb{E}_{RD} [\max_{I_{iRD,t}} \{ \Pi_{i,t}(\omega_{i,t}, e_t) - [f_{RD,0}(1 - I_{iRD,t-1}) + f_{RD} I_{iRD,t-1}] + \beta \mathbb{E}_t V_{i,t+1}(s_{i,t+1} | I_{iRD,t} = 1, s_{i,t}), \\ &\Pi_{i,t}(\omega_{i,t}, e_t) + \beta \mathbb{E}_t V_{i,t+1}(s_{i,t+1} | I_{iRD,t} = 0, s_{i,t}) \}], \end{aligned} \quad (18)$$

where $\beta = (1+r)^{-1}$ and \mathbb{E}_{RD} indicates expectations with respect to the R&D fixed costs. The firm then chooses an infinite sequence of R&D decisions $I_{iRD,t}$ that maximizes the value function subject to the financial constraint for R&D.⁴⁰

To summarize, the timing of decision making we assume is the following:

1. Observe $s_{i,t} = (\omega_{i,t}, e_t, I_{iRD,t-1})$.
2. Observe the realizations of f_x and f_m .
3. Choose variables inputs $(M_{i,t}, L_{i,t}, K_{i,t})$, export status $I_{ix,t}$ and import status $I_{im,t}$.
4. Observe realization of cash-flow shock $\epsilon_{i,t}$ and R&D fixed costs $f_{RD,0}$, and f_{RD} .
5. Make R&D decision $I_{iRD,t}$.

Having set up the model, we now discuss how to connect it to the data. First, we show how to obtain an empirical measure of (revenue-based) productivity growth and how to relate it to its theoretical counterpart in the model. This helps us interpret the region-specific correlation between TFPR growth and RER growth. Second, we provide formal reduced-form regression evidence that confirms and extends the stylized facts from section 2. The reduced-form regression coefficients so obtained provide both moments that we target in the structural estimation and non-targeted moments that can be used to evaluate the external validity of the structural model.

away the firm's idiosyncratic risk.

⁴⁰This way of modeling R&D choice helps us understand the economics of the results we report in Section 5. Small (i.e. low-productivity) firms are unlikely to carry out any R&D activity: for sufficiently large sunk costs, these firms have no incentive whatsoever to invest in R&D even in the absence of credit constraints; since they barely make any profits, the net present value of such a decision is negative. For higher-productivity firms, the net present value of investing in R&D is positive, but the credit constraint limits such activity to the amount of current cash flow corrected by the tightness of the constraint. The looser the constraint, the less current profits matter for R&D decisions. Finally, for very highly productive firms, current profits are large enough for them to finance R&D regardless of the credit constraint. Their investment activity is guided exclusively by the net present value of R&D activity.

4 Measuring Revenue-based Productivity

4.1 Production-function Estimation and Revenue-based Productivity

We follow de Loecker (2011) and Halpern et al. (2015) to recover our firm-level productivity measure. Substituting the demand function (7) into the definition of total revenue, the latter can be expressed as:⁴¹

$$R_{i,t} = p_{i,t}d_{i,t} + I_{iX,t}p_{i,t}^*d_{i,t}^* = (Y_{i,t})^{\frac{\sigma-1}{\sigma}} G_{i,t} (D_{T,t}, D_{T,t}^*, e_t), \quad (19)$$

where $Y_{i,t}$ is physical output and $G_{i,t}$ captures the state of aggregate demand, which depends on the RER e_t . $G_{i,t}$ varies by firm only through $I_{iX,t}$, an indicator variable that equals one if the firm exports and thus allows the firm to also attract foreign demand. Taking logs and plugging in production function (6), we obtain a log-linear expression of firm revenue in terms of physical output and aggregate demand:

$$r_{i,t} = \left[\tilde{\beta}_0 + \tilde{\beta}_k k_{i,t} + \tilde{\beta}_l l_{i,t} + \tilde{\beta}_m \tilde{m}_{i,t} - \tilde{\beta}_m \log(P_{X,t}) + \tilde{\beta}_m \tilde{a}_{it}(e_t) + \tilde{\omega}_{it} \right] + g_{i,t} (D_{T,t}, D_{T,t}^*, e_t), \quad (20)$$

where x indicates the natural log of the variable and \tilde{x} indicates multiplication by $\frac{\sigma-1}{\sigma}$. In Appendix A-1.3 we show how to combine (20) with the Markov process for log productivity (14) in order to consistently estimate output elasticities $\tilde{\beta}_i$ and the return to R&D α_2 .

Having recovered the output elasticities, we can construct revenue-based productivity (TFPR) as

$$tfpr_{i,t} \equiv r_{i,t} - \tilde{\beta}_l l_{i,t} - \tilde{\beta}_k k_{i,t} - \tilde{\beta}_m m_{i,t} = \left[\tilde{\beta}_0 + \tilde{\omega}_{i,t} + \tilde{\beta}_m \tilde{a}_{i,t} - \tilde{\beta}_m \log P_{X,t} \right] + g_{i,t} (D_{T,t}, D_{T,t}^*, e_t). \quad (21)$$

Notice that measured revenue-based productivity is a combination of physical productivity $\tilde{\beta}_0 + \tilde{\omega}_{i,t}$, import effects on productivity $\tilde{\beta}_m \tilde{a}_{i,t}(e_t)$ and demand $g_{i,t} (D_{T,t}, D_{T,t}^*, e_t)$. We thus need to use our structural model to decompose it into these three effects.⁴²

4.2 Estimates of the Return to R&D and Output Elasticities

Table A-7 in the Appendix reports the point estimates of both the production-function parameters (equation (6)) and the parameters of the stochastic process for log-productivity (equation (14)) for the pooled sample (industrialized countries, emerging Asia, other emerging markets). In columns (1) and (2) we report unconstrained estimates of the output elasticities of factor inputs for the gross-output and value-added production functions, while in columns (3) and (4) we report estimates imposing constant returns to scale. Depending on the specification, the estimate for the R&D coefficient $\tilde{\alpha}_2$ is in the interval [0.033, 0.078], which, given a value of σ of 4⁴³, corresponds to a short-run TFP return

⁴¹Details of the derivation can be found in Appendix A-1.3.

⁴²In the construction of the empirical measure of TFPR, we do not adjust for the markup term (i.e., we do not multiply the output elasticities by $\sigma/(\sigma-1)$). As we showed in Appendix Table A-3 adjusting output elasticities for this term makes no substantial difference for the empirical results. Consistently, when computing the decomposition of tfpr from the structural model, we also multiply coefficients by $(\sigma-1)/\sigma$ (see below).

⁴³We discuss the calibration/estimation of the structural parameters in Section 6 below.

to R&D α_2 of 4.4 to 10.4 percent. Given an auto-correlation of TFP of around 0.9, this implies a steady-state TFP difference between a firm that never engages in R&D and one that always performs R&D of 40 to 100 percent. These numbers are broadly in line with the literature (see, e.g., Aw et al., 2010). To be conservative, we set the return equal to 6 percent in the model simulation, and provide robustness checks for an even lower value.

The estimates for the output elasticities suggest increasing returns to scale for the case of the gross-output-based production function and constant returns for the value-added production function.⁴⁴ In the model simulations, we scale output elasticities to add up to unity (constant returns).

4.3 Decomposing the Revenue-based Productivity Effects of RER Changes

We now use our structural model to derive a decomposition that splits the revenue-based productivity elasticity with respect to the RER into physical TFP growth due to changes in innovation, an import channel and an export demand channel. We use our structural model to decompose the observed average elasticities of TFPR with respect to the RER into these three components.

In the reduced-form regressions below we model the conditional expectation of TFPR as

$$\mathbb{E}(tfpr_{ic,t}|X_{ic,t}) = \beta_0 + \beta_1 \log e_{c,t} + \beta_2 X_{sc,t} + \delta_i + \delta_t,$$

where δ_i is a firm fixed effect, δ_t is a time fixed effect and $X_{sc,t}$ is a vector of sector-country control variables potentially including further fixed effects.

Taking time differences to eliminate δ_i , we obtain the empirical regression specification

$$\Delta \mathbb{E}(tfpr_{ic,t}) = \beta_1 \Delta \log e_{ct} + \beta_2 \Delta X_{ic,t} + \Delta \delta_t, \quad (22)$$

where $\beta_1 = \frac{\Delta \mathbb{E}(tfpr_{ic,t})}{\Delta \log e_{ct}}$.

Taking expectations of (21) and derivatives with respect to RER, we can compute the model counterpart to the reduced-form regression coefficient β_1 , the expected elasticity of TFPR with respect to RER:

$$\beta_1 \equiv \frac{\partial \mathbb{E}(tfpr_{i,t})}{\partial \log e_t} = \underbrace{\tilde{\alpha}_2 \frac{\partial \text{Prob}(I_{iRD,t-1}=1)}{\partial \log e_t}}_{\text{innovation}} + \underbrace{\tilde{\beta}_m \frac{\partial \mathbb{E}(\tilde{a}_{i,t})}{\partial \log e_t}}_{\text{imports}} + \underbrace{\frac{\partial \mathbb{E}(g_{i,t}(D_{T,t}, D_{T,t}^*, e_t))}{\partial \log e_t}}_{\text{export demand}} \quad (23)$$

Note that $\frac{\partial \text{Prob}(I_{RD,t-1}=1)}{\partial \log e_t} = \frac{1}{\gamma_1} \frac{\partial \text{Prob}(I_{RD,t}=1)}{\partial \log e_t}$. This is the **innovation channel** of the elasticity of TFPR with respect to RER. Changes in R&D imply persistent changes in physical TFP. The innovation channel consists of (i) a *market-size effect* and (ii) a *financial-constraints effect*. The former affects

⁴⁴The coefficients on labor, capital and materials in column (1) are 0.336, 0.097 and 0.681 and correspond to $\beta_L = 0.448$, $\beta_K = 0.129$ and $\beta_M = 0.899$, which suggests increasing returns to scale. By contrast, the estimates for the value-added-based output elasticities in column (2) are $\hat{\beta}_L = 0.533$, and $\hat{\beta}_K = 0.208$ ($\beta_L = 0.71$ and $\beta_K = 0.28$), suggesting constant returns. The estimates for the constrained coefficients in column (3) are 0.336, 0.051 and 0.363 and imply $\beta_L = 0.448$, $\beta_K = 0.068$ and $\beta_M = 0.484$.

R&D activity through changes in export market profits and, subsequently, in the net present value of future profits. The latter operates through a change of current cash flow and, subsequently, of the borrowing constraint. Below we decompose the innovation channel into these two effects.

The second term is the **import channel** of the elasticity of TFPR with respect to the RER, which affects the elasticity of TFPR negatively. It operates through changes in marginal costs due to changes in the imports of intermediate inputs. This changes in importing of intermediates imply transitory changes in physical TFP. It can be further divided into two terms: the *extensive margin*, which measures the change in the probability to import weighted by the average import intensity; and the *intensive margin*, which measures the change in import intensity weighted by the average probability to import.⁴⁵ This importing channel channel is more relevant in the presence of a larger fraction of importers and a higher import intensity.

Finally, the third term is the **export demand channel** of the elasticity of TFPR. An increase in the RER increases demand for *exporters*. Again, this term can be further decomposed into two terms: the *extensive margin*, which represents the change in the probability of exporting weighted by average export sales; and *intensive margin*, which measures the average change in exports weighted by the probability of exporting.⁴⁶ The export demand channel is more important in the presence of a larger fraction of exporters and a higher export intensity.

5 Reduced-form Evidence

In this section, we present more formal reduced-form regression evidence for the stylized facts from section 2. We will use the coefficients of interest from these regressions either to obtain statistics to be matched in the structural estimation procedure or as untargeted moments that can be used to evaluate the model's external validity.

5.1 Regional Heterogeneity

We regress a number of firm-level variables on the growth rate of the RER, allowing the effect of the RER to vary by region. Since the aggregate RER is the relative price of the foreign vs. domestic aggregate goods basket, endogeneity to aggregate shocks may potentially be a concern. Our analysis considers the exogenous component of RER fluctuations as exogenous demand shocks that impact on firms' export, import and innovation decisions. The fact that we investigate how *firm-level* outcomes of manufacturing firms are affected by RER movements makes reverse causality unlikely. Omitted-variable bias is perhaps more of a concern. In particular, positive aggregate supply shocks should be positively correlated with the RER, while positive demand shocks should negatively correlate with it. Therefore, we always control for the aggregate growth rate of the economy. As an alternative, we pursue

$$\begin{aligned}
^{45} \tilde{\beta}_m \frac{\partial \mathbb{E}(\tilde{a}_{i,t})}{\partial \log e_t} &= \tilde{\beta}_m \left[\frac{\partial \text{Prob}(I_{im,t} > 0)}{\partial \log e_t} \mathbb{E}(\tilde{a}_{i,t} | I_{im,t} > 0) + \text{Prob}(I_{im,t} > 0) \frac{\partial \mathbb{E}(\tilde{a}_{i,t} | I_{im,t} > 0)}{\partial \log e_t} \right]. \\
^{46} \frac{\partial \mathbb{E}(g_{i,t}(D_{T,t}, D_{T,t}^*, e_t))}{\partial \log e_t} &= \left[\frac{\partial \text{Prob}(I_{ix,t} = 1)}{\partial \log e_t} \mathbb{E}(g_{i,t}(D_{T,t}, D_{T,t}^*, e_t) | I_{ix,t} = 1) + \text{Prob}(I_{ix,t} = 1) \frac{\partial \mathbb{E}(g_{i,t}(D_{T,t}, D_{T,t}^*, e_t) | I_{ix,t} = 1)}{\partial \log e_t} \right].
\end{aligned}$$

an instrumental-variable strategy and use trade-weighted exchange rates, which allows us to control for country-year fixed effects that absorb aggregate shocks. The baseline regression specification is given by:

$$\Delta \log(Y_{ic,t}) = \beta_0 + \sum_{r \in R} \beta_r \Delta \log(e_{c,t}) I_r + \beta_2 X_{c,t} + \delta_{sc} + \delta_t + u_{ic,t}, \quad (24)$$

where I_r is a dummy for country c belonging to region r , δ_{sc} is a 3-digit-sector-country fixed effect (controlling for the average growth rate in a given sector-country pair) and δ_t is a time fixed effect. The vector $X_{c,t}$ consists of business-cycle controls and includes the real GDP growth rate and the inflation rate. Controlling for inflation corrects for the fact that our dependent variables are measured in nominal value of domestic currency,⁴⁷ while we control for real GDP growth because open-economy macro models predict that changes in the real exchange rate are correlated with economic growth. We cluster standard errors at the country level since all firms in a given country are exposed to the same RER shock and RERs are auto-correlated. This choice of clustering implies that standard errors are robust to arbitrary correlation of the error terms across firms within a given country-year and over time within a given country.

We consider five different firm-level dependent variables $\Delta \log(Y_{ic,t})$: 1) the revenue-based TFP (TFPR) growth rate, constructed from value added; 2) the revenue-based TFP growth rate, constructed from gross output; 3) the growth rate of sales; 4) the growth rate of cash flow; 5) the change of an indicator variable for R&D.⁴⁸ We also consider the (log) entry rate into exporting at the country-time level, defined as the number of new exporters relative to the number of total exporters, from the World Bank’s Exporter Dynamics Database.

Table 2 reports results based on yearly data and aggregate RERs. In emerging Asia, real depreciations have a significantly positive impact on firm-level outcomes: a one-percent depreciation of the RER increases value-added TFPR growth by 0.24 percentage points, gross-output TFPR growth by 0.12 percentage points, sales growth by 0.2 percentage points, and cash flow growth by 0.78 percentage points. The probability of R&D increases by 0.19 percentage points and the export entry rate increases by 0.55 percentage points. By contrast, in the other emerging economies, real depreciations are associated with significantly slower TFPR and sales growth, while there is no significant effect on cash flow, R&D probabilities and export entry. Finally, in industrialized countries, a real depreciation has no significant effect on firm-level TFPR, sales, R&D probabilities and export entry rates, while the impact on cash flow is negative. These results are robust to excluding the years of the global financial crisis from our sample and to using alternative productivity measures (see Tables A-2 and A-3 in the Appendix).

Alternatively, we also consider an instrumental-variable strategy that exploits exogenous fluctuations in world commodity prices and world capital flows. Both higher commodity prices and larger world-level capital flows are plausibly exogenous to domestic shocks and policies and tend to appreciate

⁴⁷We use domestic currency values. Section 7.1 analyzes valuation effects.

⁴⁸That is, in the case of R&D status we estimate a linear probability model.

Table 2: The aggregate RER and firm-level outcomes

	(1)	(2)	(3)	(4)	(5)	(6)
	$\Delta \log \text{TFPR}_{VA,it}$	$\Delta \log \text{TFPR}_{GO,it}$	$\Delta \log \text{sales}_{it}$	$\Delta \log \text{c. f.}_{it}$	$\Delta \text{R\&D prob.}_{it}$	$\Delta \log \text{exp. entry rate}_{ct}$
$\Delta \log e_{ct} \times$	0.239***	0.120***	0.195	0.783***	0.191*	0.552***
emerging Asia _c	(0.0895)	(0.0198)	(0.216)	(0.114)	(0.095)	(0.207)
$\Delta \log e_{ct} \times$	-0.546***	-0.105**	-0.762***	-0.557	0.16	0.063
other emerging _c	(0.185)	(0.0426)	(0.274)	(0.414)	(0.125)	(0.059)
$\Delta \log e_{ct} \times$	0.0196	-0.031	-0.282	-0.319**	-0.168	-0.275
industrialized _c	(0.103)	(0.0309)	(0.217)	(0.126)	(0.149)	(0.274)
Observations	1,333,986	1,333,986	1,275,606	772,970	148,367	392
R-squared	0.057	0.038	0.103	0.024	0.016	0.107
Country-sector FE	YES	YES	YES	YES	YES	NO
Time FE	YES	YES	YES	YES	YES	YES
Business cycle controls	YES	YES	YES	YES	YES	YES
Cluster	Country	Country	Country	Country	Country	Country

Notes: The dependent variable in columns (1)-(5) is the annual log difference in the following firm-level outcomes computed from Orbis for manufacturing firms for the years 2001-2010: revenue-based TFP computed from value-added (column 1), revenue-based TFP computed from gross output (column 2), nominal sales (column 3), cash flow (column 4), an indicator for R&D status (column 5). The construction of TFP is explained in section 4 of the paper. In column (6) the dependent variable is the log annual change in the export entry rate compute from the Worldbank's export dynamics database. The main explanatory variable of interest is the annual log difference in the real exchange rate from the PWT 8.0 interacted with dummies for: emerging Asia; other emerging economy; industrialized economy. The regressions also control for the real growth rate of GDP in PPP (from PWT8.0) and the inflation rate (from IMF). Standard errors are clustered at the country level.

the RER through their impact on domestic inflation. Moreover, the domestic effects of these external shocks are larger for countries that rely more on commodity trade or have more open financial accounts.⁴⁹

Finally, we identify the causal impact of RER fluctuations by using trade-weighted exchange rates. In this case, we can control for country-time fixed effects, which eliminate any spurious correlation due to aggregate shocks to the manufacturing sector.⁵⁰

⁴⁹In Table A-4 in the Appendix we show that our results are robust to instrumenting for RER changes with (i) trade-weighted world commodity prices (using pre-sample trade weights) and (ii) interactions of world gross financial flows with pre-sample values of the Chinn-Ito index for financial account openness. We construct two instruments for the RER. The first one is based on a trade-weighted average of world commodity prices (a fixed set of agricultural commodities, metals, oil). For each country and commodity we compute exports and imports (using trade data from WITS) in the pre-sample year 2000 to construct trade weights. We then compute the instrument as a country-specific trade-weighted average of world commodity prices (using price information from the Worldbank). Our second instrument is based on world capital flows. We compute world capital flows as the sum of equity and debt inflows across countries (from IMF). We then interact this variable (which has only time variation), with the value of the Chinn-Ito index (Chinn and Ito, 2006) for financial openness in the pre-sample year 2000. World commodity prices interacted with commodity-country-specific trade weights are strongly negatively correlated with RER changes, in particular for emerging economies. The rationale for the second instrument is that world gross financial flows should also be independent of local economic conditions and act as a push factor for the RER, in particular for countries with an open financial account, as measured by the Chinn-Ito index.

⁵⁰Here we can also dismiss endogeneity concerns due to country-sector-specific shocks: the trade-weighted RERs are constructed using pre-sample trade-weights and each of the 163 manufacturing sectors has negligible weight in a given country's aggregate price level, which is used to construct the RERs. Replacing the aggregate RER with export- and import-weighted sector-specific RERs as separate explanatory variables allows us to include country-time fixed effects in the regression. This way we directly control for aggregate shocks to the manufacturing sector that might be correlated

5.2 Trade Status

In this section, we provide direct evidence that the effect of RER changes on firm-level outcomes depends on the firms' trade status. We run firm-level outcomes on changes in the RER, allowing for differential effects for exporters (for which we expect the effects of RER depreciations to be positive) and importers (for which we expect the effects to be negative). Since the interaction of trade status with the RER varies at the firm-country-time level, this specification allows us to include country-sector-time fixed effects. In this way we can control for any unobserved shocks to a given country-sector-pair. These fixed effects absorb the impact on the baseline category (domestic firms which neither export nor import). We also control for an interaction of RER with a dummy for the multinational status of the firm, which is highly correlated with trade participation.⁵¹ Again, we cluster standard errors at the country level.

$$\Delta \log(Y_{ic,t}) = \beta_0 + \sum_{r \in R} \sum_{T \in exp, imp} \beta_{Tr} \Delta \log(e_{c,t}) I_T I_r + \sum_{r \in R} \sum_{T \in exp, imp} I_T I_r + \delta_{sct} + u_{ic,t} \quad (26)$$

Table 3 reports the corresponding results. As expected, in emerging Asia the interaction term of RER changes with export status is positive, highly significant and large, while the interaction with import status is negative and strongly significant. Similarly, for firms in other emerging countries the interaction effect with export status is positive and significant and the interaction effect with import status is negative.⁵² Finally, for firms in industrialized countries the interaction effects with export status and import status are small and mostly statistically insignificant.⁵³

5.3 Financial Constraints

In order to understand the effect of financial constraints on R&D decisions, we check if the probability to engage in R&D is affected by the availability of internal cash flow. We allow the impact of internal cash flow to depend both on firm size and the country's financial development.

with firm-level outcomes. The regression specification is thus:

$$\Delta \log(Y_{ic,t}) = \beta_0 + \sum_{r \in R} \beta_r^{EXP} \Delta \log(e_{c,t}^{EXP}) I_r + \sum_{r \in R} \beta_r^{IMP} \Delta \log(e_{c,t}^{IMP}) I_r + \delta_{sc} + \delta_{c,t} + u_{ic,t}, \quad (25)$$

where $\delta_{c,t}$ is a country-time-specific fixed effect that controls for any unobserved shock to the manufacturing sector of a given country. We now cluster standard errors at the country-industry level. Table A-5 in the Appendix presents the corresponding results, which are similar to those in Table 1. In emerging Asia, real depreciations of the export-weighted RER are highly significant and are associated with faster TFPR, sales and cash flow growth and higher R&D probabilities. In the set of other emerging economies, real depreciations of the export-weighted RER have instead an (insignificantly) negative impact on firm-level outcomes. In industrialized countries, they have no significant effects on firm-level outcomes. By contrast, depreciations of the import-weighted RER (which measure mostly changes in import competition) have no statistically significant impact on outcomes. Finally, we have also found very similar results using specifications in 3-year annualized differences. These results are available on request.

⁵¹To avoid endogeneity of firms' status, we keep the firms' trade and multinational status fixed over the sample period and equal to the status in the first period we observe it.

⁵²For related evidence see Brito, Magud, and Sosa (2018).

⁵³The interactions with dummies for multinational status are mostly insignificant in all regions.

Table 3: The aggregate RER and firm-level outcomes by firm's trade participation status and region

	(1)	(2)	(3)	(4)	(5)
	$\Delta \log \text{TFPR}_{VA,it}$	$\Delta \log \text{TFPR}_{GO,it}$	$\Delta \log \text{sales}_{it}$	$\Delta \log \text{c. f.}_{it}$	$\Delta \text{R\&D prob.}_{it}$
$\Delta \log e_{ct} \times$	0.197**	0.030	0.135***	0.243***	0.065***
emerging Asia _c × exporter _f	(0.075)	(0.019)	(0.036)	(0.035)	(0.011)
$\Delta \log e_{ct} \times$	-0.157***	-0.016**	-0.099***	-0.123**	-0.101***
emerging Asia _c × importer _f	(0.041)	(0.008)	(0.024)	(0.049)	(0.012)
$\Delta \log e_{ct} \times$	-0.005	0.019	-0.088***	-0.096	-0.049*
emerging Asia _c × multinational _f	(0.045)	(0.019)	(0.015)	(0.059)	(0.024)
$\Delta \log e_{ct} \times$	0.394**	0.087**	0.333***	1.162***	0.167***
other emerging _c × exporter _f	(0.159)	(0.036)	(0.079)	(0.281)	(0.029)
$\Delta \log e_{ct} \times$	-0.251	-0.074	0.005	-0.803***	-0.119
other emerging _c × importer _f	(0.177)	(0.046)	(0.102)	(0.203)	(0.072)
$\Delta \log e_{ct} \times$	-0.027	-0.083**	0.382	0.502*	0.036
other emerging _c × multinational _f	(0.127)	(0.040)	(0.248)	(0.292)	(0.024)
$\Delta \log e_{ct} \times$	0.006	-0.004	0.025	0.272***	-0.004
industrialized _c × exporter _f	(0.021)	(0.009)	(0.033)	(0.085)	(0.018)
$\Delta \log e_{ct} \times$	0.046	0.012***	0.068***	-0.052	-0.042**
industrialized _c × importer _f	(0.028)	(0.004)	(0.014)	(0.078)	(0.016)
$\Delta \log e_{ct} \times$	0.033	0.020*	0.045	0.144	-0.040
industrialized _c × multinational _f	(0.034)	(0.011)	(0.043)	(0.088)	(0.028)
Observations	511,061	511,061	481,733	313,856	35,151
R-squared	0.094	0.076	0.16	0.063	0.116
Country-sector-time FE	YES	YES	YES	YES	YES
Firm status controls	YES	YES	YES	YES	YES
Cluster	Country	Country	Country	Country	Country

Notes: The dependent variable in columns (1)-(5) is the annual log difference in the following firm-level outcomes computed from Orbis for manufacturing firms for the years 2001-2010: revenue-based TFP computed from value-added (column 1), revenue-based TFP computed from gross output (column 2), nominal sales (column 3), cash flow (column 4), an indicator for R&D status (column 5). The construction of TFP is explained in section 4 of the paper. The main explanatory variable of interest is the triple interaction between the annual log difference in the real exchange rate from the PWT 8.0; firm-level indicators for exporting, importing and multinational status; and dummies for: emerging Asia; other emerging economy; industrialized economy. The regressions also control for the firms' exporter, importer and multinational status. Standard errors are clustered at the country level.

We run the following regression for the firms in the Orbis dataset:

$$I_{iRD,t} = \beta_0 \sum_{i=1}^4 \beta_{1i} \log(\text{cashflow})_{i,t} \times \text{size}_i + \sum_{i=1}^4 \beta_{2i} \log(\text{cashflow})_{i,t} \times \text{size}_i \times \text{fin.dev.}_c + \beta_4 X_{ic,t} + \nu_{i,t}, \quad (27)$$

where $I_{iRD,t}$ is an indicator that equals one if firm i performs R&D in year t . $\log(\text{cash flow})_{i,t}$ is the firm's cash flow (in logs), size_i is a dummy indicator for the firm-size quartile (measured in terms of $\log(\text{employment})$) and financial dev is a measure of the country's financial development (private credit/GDP). Credit-constrained firms are more likely to rely on internal cash flow to finance investment projects. A positive relationship between cash flow and investment therefore suggests the presence of financial constraints. Moreover, internal cash flow may have a different impact on the probability to engage in R&D depending on firm size; we allow for this by interacting cash flow with dummies for firm size quartiles. We always include the following set of additional controls: firm-size-bin dummies, capital stock (in logs), the inflation rate and the real growth rate of GDP. Depending on the specification, we include different fixed effects (country and sector, or country-sector). Since we are regressing firm-level variables on each other, endogeneity is of course a concern here; we thus emphasize that these are just conditional correlations that we will replicate with our structural model.⁵⁴

We report results for these specifications in Table 4. The coefficient on (log) cash flow interacted with the dummy for the smallest firm-size quartile is insignificant, suggesting that for these firms R&D status is insensitive to cash flow. This is due to the fact that small firms hardly carry out any R&D investments. Medium-size to large firms do invest in R&D, but tend to be financially constrained: for them, cash flow is robustly positively related to R&D, as indicated by the significantly positive coefficients on the interaction between (log) cash flow and the dummies for the 3rd and 4th firm-size quartiles. Finally, the triple interaction term between (log) cash flow, the firm-size-bin dummies and the country's financial development is negative and statistically significant for the 3rd and 4th firm-size bin: for these firms the relevance of internal cash flow for R&D is smaller in countries with more developed capital markets. Table 5 reports the predicted marginal effects of (log) cash flow for each region by firm-size quartile. Cash flow is not significantly correlated with R&D for the smallest quartile of firm size. By contrast, its association with R&D for large firms is most prominent for the set of other emerging economies (around 0.046), intermediate for emerging Asia (0.039), and smallest for industrialized countries (0.027). Thus, the presence of developed capital markets reduces the relevance of internal cash flow for firms engaging in R&D activity.

⁵⁴Using lagged cash flow instead of current cash flow mitigates endogeneity concerns and gives very similar results. More generally, as documented by Lerner and Hall (2010), there is substantial evidence on the role of internal funds and cash flowing financing R&D.

Table 4: R&D sensitivity to cash flow by firm-size quartiles and level of financial development

	(1)	(2)
	R&D prob. _{it}	R&D prob. _{it}
log(cash flow) _{ft} ×	0.015	0.008
size quartile 1 _f	(0.019)	(0.019)
log(cash flow) _{ft} ×	0.035**	0.018
size quartile 2 _f	(0.0153)	(0.014)
log(cash flow) _{ft} ×	0.052***	0.048***
size quartile 3 _f	(0.005)	(0.006)
log(cash flow) _{ft} ×	0.056***	0.059***
size quartile 4 _f	(0.003)	(0.003)
log(cash flow) _{ft} ×	-0.0001	-0.0001
size quartile 1 _f × credit _c	(0.0001)	(0.0001)
log(cash flow) _{ft} ×	-0.0002*	-0.0001
size quartile 2 _f × credit _c	(0.0001)	(0.0001)
log(cash flow) _{ft} ×	-0.0002***	-0.0002***
size quartile 3 _f × credit _c	(0.00004)	(0.00004)
log(cash flow) _{ft} ×	-0.0002***	-0.0002***
size quartile 4 _f × credit _c	(0.00002)	(0.00002)
R-squared	0.347	0.383
Observations	117,394	117,142
Time FE	YES	YES
Sector FE	YES	NO
Country FE	YES	NO
Sector-country FE	NO	YES
Firm controls	YES	YES
Business cycle controls	YES	YES
Cluster	Firm	Firm

Notes: The dependent variable is an indicator for the firm's R&D status. Explanatory variables are firm-level cash flow (in logs) interacted with 4 dummies for the quartiles of (log) firm employment and triple interactions of these variables with financial development (measured as private credit/GDP). Further controls include (coefficients not reported): dummies for quartiles of (log) firm employment, capital (in logs), the real GDP growth rate (from PWT 8.0) and the inflation rate (from IMF).

Table 5: Marginal effects of cash flow on R&D (estimates by region)

	emerging	other	industrialized
	East Asia	emerging	
credit/GDP	0.84	0.50	1.47
marginal effect of cash flow – firm-size quartile 1	0	0	0
marginal effect of cash flow – firm-size quartile 2	0.017	0.024	0.003
marginal effect of cash flow – firm-size quartile 3	0.034	0.041	0.020
marginal effect of cash flow – firm-size quartile 4	0.039	0.046	0.026

Notes: Predicted marginal effects of (log) cash flow by firm size quartile for each region.

6 Indirect-inference Estimation

We now use the reduced-form estimates from the previous section in order to identify a number of the structural model parameters. Before we do this, we need to calibrate a few parameters (r, σ, ε) that we cannot identify from the data. Table 6 reports our preferred values for these parameters and the list of parameters that we estimate structurally within the model. For industrialized economies, we choose a real interest rate of 5%. For emerging markets, we set the annual real interest rate to 10%, a reasonable value for these economies. We set the elasticity of demand σ equal to 4 (see Costinot and Rodriguez-Clare, 2014). We set the elasticity of substitution between domestic and imported intermediates equal to 4, which is in the range estimated by Halpern et al. (2015) for Hungarian firms. We provide robustness checks for these parameter choices in Section 7.

The structural estimation method employed in this paper is Indirect Inference (Gouriéroux and Monfort, 1993). We first choose a set of auxiliary statistics that provide a rich statistical description of the data and then try to find parameter values such that the model generates similar values for these auxiliary statistics. More formally, let ν be the $p \times 1$ vector of data statistics and let $\nu(\Theta)$ denote the synthetic counterpart of ν with the same statistics computed from artificial data generated by the structural model. Then the indirect-inference estimator of the $q \times 1$ vector Θ , $\tilde{\Theta}$ is the value that solves

$$\min_{\Theta} (\nu - \nu(\Theta))' V (\nu - \nu(\Theta)), \quad (28)$$

where V is the $p \times p$ optimal weighting matrix (the inverse of the variance-covariance matrix of the data statistics ν). The following parameters $\tilde{\Theta}$ are estimated within the structural model: the mean export fixed cost f_x , the mean import fixed cost f_m , the mean R&D sunk cost $f_{RD,0}$, the mean R&D fixed cost f_{RD} , the credit-constraint parameter θ and the domestic and foreign aggregate demand levels D_T and D_T^* . We also estimate within the model the auto-correlation coefficient of TFP, α_1 , and the standard deviation of the TFP shocks σ_u .⁵⁵

In order to identify the model parameters, we choose to match a number of cross-sectional statistics (the export probability, the import probability, the export/sales ratio for exporters, the import/sales ratio for importers, the R&D probability, the mean and the standard deviation of the firm-size distribution in terms of log sales) and dynamic moments (the start and the continuation rate of R&D, the elasticities of the R&D probability and TFPR with respect to the RER, the elasticity of R&D with respect to cash flow of the top firm-size quartile, the ratio of this statistic for the fourth relative to the second firm-size quartile, and the auto-correlation of TFPR). Overall, we estimate 10 parameters, targeting 13 statistics. Thus, the model is over-identified.

While parameters and moments are all jointly identified, some moments are much more sensitive to certain parameters than to others. The export probability mainly identifies the distribution of export fixed costs, while the export-to-sales ratio is informative about relative foreign demand. A higher mean

⁵⁵In principle, these parameters can be directly recovered from the production-function estimation, but there we allow for a Markov process which is a bit more general than AR(1). We do this because the production-function estimation works much better when we also allow for a square term in lagged productivity.

Table 6: Parameters needed

Parameter	Description	Value	Parameter	Description
(*set without solving the dynamic model*)			(*estimated parameters*)	
σ	demand elasticity	4	f_x	export fixed cost, mean
ε	subst. elasticity intermediates	4	f_m	import fixed cost, mean
r	interest rate (emerging)	0.10	$f_{RD,0}$	R&D sunk cost, mean
r	interest rate (industrialized)	0.05	f_{RD}	R&D fixed cost, mean
α_2	return to R&D	0.06	θ	coefficient for credit constraint
γ_1	persistence, log RER	0.93	α_1	persistence, log productivity
σ_ν	s.d., log RER	0.1	σ_u	s.d., innovation of log productivity
			$\log(D_T)$	log domestic demand
			$\log(D_T^*)$	log foreign demand

export fixed cost reduces export participation, while higher foreign demand increases the exports-to-sales ratio. The elasticity of TFPR with respect to the RER also plays a role for pinning down these parameters: *ceteris paribus*, the smaller the export fixed costs and the larger foreign demand, the higher the export participation and intensity. Thus, the elasticities of average export demand and TFPR with respect to the RER will be higher in this case.

The import probability and the import-to-sales ratio are most sensitive to import fixed costs and the relative quality of imported intermediates. A larger mean import fixed cost reduces import participation, while a larger price-adjusted quality of imported intermediates increases import intensity. Higher import participation and import intensity also reduce the average elasticity of TFPR with respect to the RER, as for importers TFPR contains the import component which is affected negatively by an RER depreciation.

The elasticity of R&D with respect to cash flow is informative about the credit-constraint parameter, as it governs the extent to which R&D decisions are determined by current profits rather than by the net present value of future profits. Moreover, comparing the elasticities of R&D with respect to cash flow for the fourth and second firm-size quartiles is informative about how this statistic varies with firm size, which in turn depends on the level of credit constraints (see Table 4). When credit constraints are relaxed, the relationship between the elasticity of R&D with respect to cash flow and firm size becomes looser. In the presence of tight credit constraints and sufficiently large start-up costs of R&D, low-productivity firms do not find it worthwhile to engage in R&D, while medium to high-productivity firms are credit constrained. Thus, the R&D decisions are very sensitive to current profits for sufficiently productive firms. By contrast, with loose credit constraints, low-productivity firms do not find it profitable to engage in R&D, while high-productivity firms' decisions are determined by net-present-value considerations. Consequently, the R&D choices of sufficiently productive firms are not very sensitive to changes in the level of current cash flow.

The identification of the parameters related to R&D is more complicated, since individual param-

eters affect several moments simultaneously. Given the TFP-return to R&D, α_2 , and the process for the RER, the R&D probability, the R&D start rate, the R&D continuation rate, the auto-correlation of TFPR and the firm-size distribution together identify the R&D sunk and fixed costs, the auto-correlation and the standard deviation of TFP. Other things equal, a higher R&D sunk cost reduces the R&D participation and start rates, and raises the R&D continuation rate; it also affects the auto-correlation of TFPR and the elasticity of TFPR with respect to the RER by making R&D less sensitive to fluctuations in the RER. A higher R&D fixed cost mainly reduces the R&D participation rate. Finally, the auto-correlation and standard deviation of TFP affect the firm-size distribution, export and import participation, the net present value of R&D and its option value, thereby influencing the R&D participation, start and continuation rates.

The indirect-inference procedure is implemented as follows. For a given set of parameter values, we solve the value function and the corresponding policy function with a value-function iteration procedure: we first draw a set of productivity and RER shocks; we then simulate a set of firms for multiple countries with different realizations of the RER and compute the statistics of interest. We compare the simulated and data statistics and update the parameter values to minimize the weighted distance between them. We iterate these steps (keeping the draws of the shocks fixed) until convergence. See the Appendix for details.

7 Structural Estimation Results

7.1 Estimates of the RER Process

The parameters of the real exchange rate process can be estimated without simulating the model. We estimate the AR(1) process of the log RER $\log(e_t)$ (see equation (1)) for the period 2001-2010 and pooling all countries in the sample. Table A-8 in the Appendix reports the corresponding results. The point estimate for the auto-correlation of the log RER γ_1 is 0.93: swings in the RER are very persistent and can thus potentially have a significant effect on firms' dynamic R&D investment decisions.

7.2 Estimates of Other Parameters

Tables 7-9 report both the parameter values estimated using the indirect-inference procedure for the three regions (emerging Asia, other emerging markets, industrialized countries) and a comparison between the data and the simulated statistics. We report standard errors in parentheses. In general, the model performs well in terms of fitting both cross-sectional moments as well as dynamic statistics. The firms-size distribution and the import and export probabilities and intensities are always very precisely matched, while the model slightly under-predicts R&D participation rates. R&D start and continuation rates are also quite closely matched in all regions. The model matches the difference in signs of TFPR with respect to the RER across regions. The predicted RER elasticities are slightly larger in absolute magnitudes (0.21 vs. 0.12 for emerging Asia; -0.15 vs. -0.10 for other emerging

economies) and the elasticities of R&D with respect to cash flow for the top firm-size quartile display slightly more variation across regions in the model than in the data. Overall, the discrepancies between model-generated and data moments are small.

The parameters are estimated quite precisely. The mean sunk costs incurred by R&D starters are large for firms in all regions. The values are remarkable relative to average R&D benefits (17.6 percent of average R&D benefits for emerging Asia, around 28 percent for other emerging economies and 102 percent for industrialized countries).⁵⁶ The mean R&D fixed cost for continuous R&D performers is much smaller than R&D start-up costs: these costs correspond to roughly 0.24 to 1 percent of mean R&D benefits. The mean fixed cost for importing is relatively low in relation to importers' sales (corresponding to the 4th-5th percentile of importers' sales). The mean fixed cost for exporting is more sizable and corresponds to the 10-12th percentile of exporters' sales. The high export intensity of firms in emerging Asia is due to large foreign demand relative to domestic demand as shown by the values of $\log(D_T^*)$ and $\log(D_T)$.

The value of parameter A , the price-adjusted relative quality of imported intermediates, is significantly lower than one for emerging Asia and the industrialized countries (0.72 and 0.69, respectively), whereas it takes on a larger value for other emerging economies (0.97). Credit constraints are substantial in emerging Asia and other emerging economies (firms in these regions are estimated to be able to borrow up to 15 and 11 times their current profits, respectively) and pretty much non-binding in industrialized countries (their firms can borrow up to 53 times current profits). This parameter is estimated relatively precisely, except for industrialized countries. Finally, the parameters ruling the stochastic process of log-productivity ω are comparable across the three subsamples: α_1 and σ_u are in the ballpark of 0.85 and 0.45, respectively. Thus, productivity is very persistent.

Table 10 reports the model's performance as far as the non-targeted statistics from the reduced-form regressions in Table 2 are concerned. For each region, we compute the elasticities of R&D, cash flow and the export-entry rate with respect to the RER from the model and compare them with the estimates from Table 2. For emerging Asia, the model somewhat under-predicts the elasticity of R&D (0.05 compared to 0.19); it performs extremely well in terms of replicating the elasticity of cash flow (0.75 compared to 0.78); and somewhat under-predicts the elasticity of the export entry rate (0.33 compared to 0.55). In all cases, the model-generated elasticity lies within the confidence interval of the data moments. For other emerging economies, the elasticity of R&D is -0.04 (0.16 in the data). However, this reduced-form point estimate is very noisy and not statistically significant, so that the model-generated elasticity is within the data confidence interval. In line with our model, the model generates a negative elasticity of cash flow (-0.51 compared to -0.55) and an elasticity of the export entry rate (0.21 compared to 0.06) similar to the corresponding data moments. Finally, for industrialized countries, there are somewhat larger discrepancies between the model-predicted elasticities, which are basically zero for the R&D and cash-flow elasticities, and the corresponding estimates from the data. However, the data estimates are very noisy and not statistically significant; the zero elasticity

⁵⁶By R&D benefits we understand the net present value of the firm's expected flow of profits if R&D takes place compared to the same variable in case no R&D occurs.

of R&D is well within the confidence interval. Overall, the model performs well in terms of fitting the non-targeted moments, confirming its validity.

7.3 Decomposing the Short-run Elasticity of Revenue-Productivity Growth

Our model highlights very different effects of real depreciations on TFPR growth and its components across regions due to the regional differences in the underlying structure of these economies. In Table 11, we use equation (23) to decompose the short-run elasticity of TFPR with respect to the RER into its various components for each of the regions. For emerging Asia, the overall elasticity is 0.21: a one-percent depreciation leads to a 0.266 percentage-point increase in export demand growth; a 0.055 percentage-point reduction in TFPR growth due to less importing; and a 0.013 percentage-point increase in TFPR growth associated to the innovation channel due to more R&D. Thus, in the short run, even in emerging Asia physical productivity gains from innovation are outweighed by productivity losses from reduced importing. However, we show below that this result is reversed in the medium run because the productivity gains from R&D are persistent, while the productivity losses due to reduced importing are temporary. In the set of other emerging economies, a one-percent depreciation is associated with a 0.153 percentage-point loss in TFPR growth, which is composed of a 0.051 percentage-point increase in export demand growth, a 0.207 percentage-point loss in TFPR growth to reduced imports, and a 0.009 percentage-point TFP gain from increased R&D. The large import dependence relative to the export orientation of these economies exacerbates the negative effects of the depreciation. Finally, the elasticity of TFPR growth is basically zero in industrialized countries (-0.017). It consists of a 0.051 percentage-point increase in export demand growth, a 0.069 percentage-point productivity growth loss due to reduced imports, and a 0.013 percentage-point productivity growth gain from increased R&D.

Table 7: Estimated parameters and model fit: emerging Asia

Parameter	Description	Value (sd)	Moments	Data	Model
f_x	log export fixed cost, mean	7.98 (0.01) (11th pctile of exporters' sales)	(*Cross-sectional moments*) R&D probability Export probability Export/sales Ratio, mean Import probability Import/sales ratio Mean firm size (log revenue) Sd, firm size (log revenue) (*Dynamic moments*) R&D, continuation prob. R&D, start prob. autocorrelation, TFPR Elasticity of TFPR w.r.t RER Elasticity of R&D prob. w.r.t c.f. (4th firm-size quantile) Elasticity of R&D prob. w.r.t c.f. (difference of 4th and 2nd firm-size quantile)	0.25	0.19
$f_{RD,0}$	log R&D sunkcost, mean	13.38 (0.53) (17.6 pct. of avg. R&D benefit)		0.26	0.26
f_{RD}	log R&D fixed cost, mean	9.06 (0.43) (0.24 pct. of avg. R&D benefit)		0.60	0.64
f_m	import fixed cost, mean	7.99 (0.03) (5th pctile of importers' sales)		0.17	0.19
A	quality of imported intermediates	0.72 (0.01)		0.17	0.19
$\log(D_T)$	log domestic demand	5.56 (0.01)		6.6	6.7
$\log(D_T^*)$	log foreign demand	6.53 (0.01)		3.23	3.19
α_1	persistence, productivity	0.86 (0.003)			
σ_u	sd, innovation of productivity	0.44 (0.006)			
θ	credit constraint	15.11 (7.94)			

Table 8: Estimated parameters and model fit: other emerging economies

Parameter	Description	Value (sd)	Moments	Data	Model
f_x	log export fixed cost, mean	4.17 (2.18) (10th pctile of exporters' sales)	(*Cross-sectional moments*) R&D probability Export probability Export/sales Ratio, mean Import probability Import/sales ratio Mean firm size (log revenue) Sd, firm size (log revenue) (*Dynamic moments*) R&D, continuation prob. R&D, start prob. autocorrelation, TFPR Elasticity of TFPR w.r.t RER Elasticity of R&D prob. w.r.t c.f. (4th firm-size quantile) Elasticity of R&D prob. w.r.t c.f. (difference of 4th and 2nd firm-size quantile)	0.25	0.22
$f_{RD,0}$	log R&D sunkcost, mean	11.24 (0.31) (28 pct. of avg. R&D benefit)		0.35	0.30
f_{RD}	log R&D fixed cost, mean	7.84 (0.32) (1 pct. of avg. R&D benefit)		0.10	0.12
f_m	log import fixed cost, mean	5.88 (0.81) (4th pctile of importers' sales)		0.39	0.35
A	quality of imported intermediates	0.97 (0.35)		0.24	0.25
$\log(D_T)$	log domestic demand	4.88 (0.30)		5.97	5.98
$\log(D_T^*)$	log foreign demand	3.02 (2.01)		2.63	2.67
α_1	persistence, productivity	0.84 (0.01)			
σ_u	sd, innovation of productivity	0.40 (0.06)			
θ	credit constraint	11.02 (2.80)			

Table 9: Estimated parameters and model fit: industrialized countries

Parameter	Description	Value (sd)	Moments (*Cross-sectional moments*)	Data	Model
f_x	log export fixed cost, mean	6.82 (1.35)	(12th pctile of exporters' sales)	0.56	0.40
$f_{RD,0}$	log R&D sunkcost, mean	13.75 (0.47)	(102 pct. of avg. R&D benefit)	0.23	0.24
f_{RD}	log R&D fixed cost, mean	9.11 (0.46)	(1 pct. of avg. R&D benefit)	0.17	0.15
f_m	log import fixed cost, mean	8.42 (1.28)	(5th pctile of importers' sales)	0.20	0.19
A	quality of imported intermediates	0.69 (0.33)		0.14	0.13
$\log(D_T)$	log domestic demand	6.66 (0.14)		7.64	7.64
$\log(D_T^*)$	log foreign demand	4.99 (1.30)		2.91	2.91
α_1	persistence, productivity	0.79 (0.003)			
σ_u	sd, innovation of productivity	0.54 (0.04)			
θ	credit constraint	53 (27.17)			
			(*Dynamic moments*)		
			R&D, continuation prob.	0.90	0.90
			R&D, start prob.	0.06	0.07
			autocorrelation, TFPR	0.90	0.81
			Elasticity of TFPR w.r.t RER	-0.03	-0.02
			Elasticity of R&D prob. w.r.t c.f.(4th firm-size quantile)	0.027	0.049
			Elasticity of R&D prob. w.r.t c.f. (difference of 4th and 2nd firm-size quantile)	0.022	0.001

Table 10: Non-targeted moments

	Model	Data	Confidence interval data moments
Emerging Asia			
elasticity of R&D w.r.t RER	0.052	0.190	[0.004, 0.376]
elasticity of cash flow w.r.t RER	0.745	0.783	[0.560, 1.006]
elasticity of export entry rate w.r.t RER	0.326	0.552	[0.146, 0.958]
Other emerging			
elasticity of R&D w.r.t RER	-0.043	0.160	[-0.085, 0.405]
elasticity of cash flow w.r.t RER	-0.514	-0.557	[-0.839, -0.275]
elasticity of export entry rate w.r.t RER	0.217	0.063	[-0.053, 0.179]
Industrialized			
elasticity of R&D w.r.t RER	-0.0002	-0.168	[-0.460, 0.124]
elasticity of cash flow w.r.t RER	-0.041	-0.319	[-0.566, -0.072]
elasticity of export entry rate w.r.t RER	0.264	-0.275	[-0.812, 0.262]

Table 11: Elasticity of TFPR w.r.t RER, Decomposition

	Innovation (R&D)	Imports	Demand	Total Elasticity
Emerging Asia	0.013	-0.055	0.266	0.21
Other emerging	0.009	-0.207	0.051	-0.153
Industrialized	0.013	-0.069	0.051	-0.017

8 Counterfactuals and the Long-run Response of Revenue-Productivity Growth to the RER

In this section, we perform a number of counterfactual exercises (separately for each region) with the estimated model in order to understand its quantitative implications regarding the long-run response of TFPR growth to changes in the RER. As a benchmark exercise, we first simulate an unanticipated temporary depreciation of the RER. We allow for a yearly depreciation of 5% for five years with a subsequent sudden 25% appreciation back to the initial level of the RER (Figure 4).⁵⁷ This magnitude corresponds roughly to a one-standard-deviation change in the RER over a five-year interval (see Appendix Table A-1 Panel D). The corresponding results show, in line with our evidence, that the effects of depreciations are heterogeneous across regions with different relative export orientation. We then simulate a similar RER depreciation of smaller magnitude (12.5%) and show that the impact of depreciations is non-linear due to a number of mechanisms, such as the substitution of domestic intermediates with foreign ones, and the complementarities between the decisions to export and import. Finally, we simulate a 25% appreciation and find remarkable asymmetries in firms' responses: these

⁵⁷These yearly changes should be interpreted as unexpected shocks. In all exercises we keep firms' beliefs about the exchange-rate process the same as in the baseline case. (See equation (1)).

arise due to the presence of sunk costs, which give rise to the option value of a firm continuing with its R&D investments.

8.1 Regional Heterogeneity: 25% Depreciation

Emerging Asia Figure 5 plots the simulation results for the outcomes averaged over the firm distribution. In particular, for every period t , $t = 1, \dots, T$, we report $\Delta\mathbb{E}(tfpr_{i,t})$, the average proportional difference between TFPR in the counterfactual and its baseline level. We think of this as the “growth rate” of TFPR in the counterfactual with respect to the baseline. We do the same for the components of TFPR: (i) physical TFP growth (always with respect to the baseline case) due to the innovation channel, (ii) TFP growth due to the import channel and (iii) TFPR growth due to the export-demand channel. The continuous red lines plot the effects of the benchmark 25% real depreciation.⁵⁸ The impact of a depreciation on TFPR growth is positive: it leads to up to a 6.5 percentage-point increase in average firm-level TFPR growth (always with respect to the baseline case). The positive export-demand effect of the depreciation on TFPR growth is even larger (up to 8 percentage points), while the negative impact on TFPR growth through the import channel is relatively small (with a minimum of -1 percentage point). Physical TFP growth due to innovation increases by up to 0.5 percentage points in response to the depreciation.

In a sub-sample of countries with relatively export-intensive firms, the profit increase due to higher demand for firms’ exports is larger than the decrease due to the fact that intermediate inputs become more expensive. The resulting net increase in profits leads to more R&D investment and an increase in physical productivity. Notice that the increase in physical productivity due to more innovation persists much longer than the other effects, which disappear as soon as the RER appreciates back to its initial level: temporary RER movements can have very long-lasting effects on physical TFP growth.

Finally, there is both a direct and an indirect impact of the depreciation working through the innovation channel of physical TFP growth. The direct effect comes through more R&D participation, while the indirect impact works through the additional exporting and importing in the future (at the extensive and intensive margins) induced by the additional R&D. These changes influence future trade participation and thus the import and demand components of TFPR.⁵⁹

Other Emerging Economies The overall impact of the depreciation on TFPR growth is negative: the depreciation leads roughly to a 3% decline in TFPR growth. (See Figure 6.) The negative effect of the depreciation on TFPR growth through the import channel (-4.3 percentage points) dominates the positive effect operating through the export-demand channel (1.6 percentage points). Physical productivity due to innovation falls by up to 0.3 percentage points. Again, changes in physical productivity due to R&D are much more long lasting than those of the other components of TFPR. Moreover, the direct impact of the decline in physical TFP due to less innovation explains only around 10% of the

⁵⁸The blue dashed-dotted lines plot the effect of a 12.5% depreciation. The gray dashed lines correspond to the effects of a 25% appreciation. Figures 6 and 7 should be read similarly.

⁵⁹Quantitatively, the indirect effect on average TFPR growth turns out to be relatively small: it accounts for at most 0.1 percentage points (around the time the RER re-appreciates back to the initial level).

Figure 4: Unexpected real depreciation (25%, 12.5%) and real appreciation (25%).

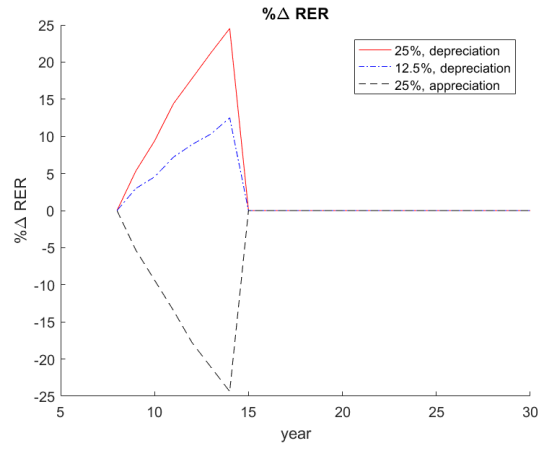


Figure 5: Average effect of an unexpected real depreciation (25%, 12.5%) and appreciation (25%) for emerging Asia.

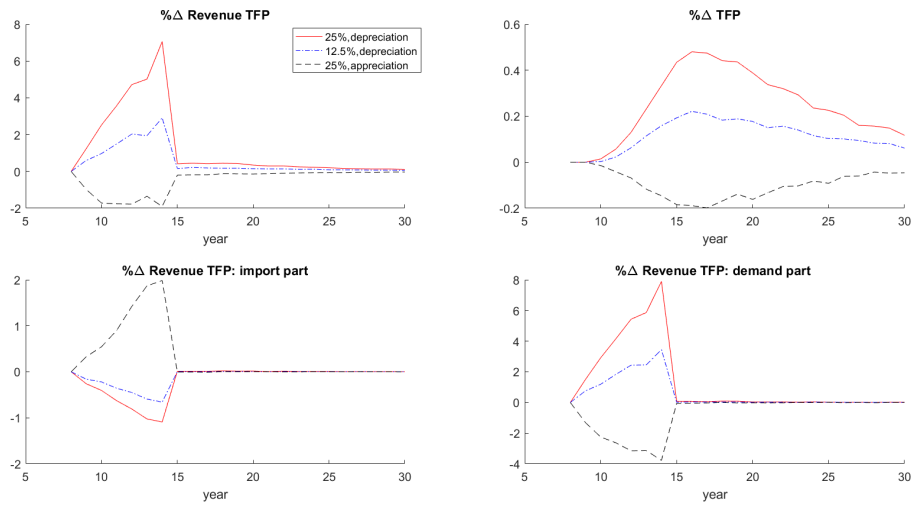


Figure 6: Average effect of an unexpected real depreciation (25%, 12.5%) and appreciation (25%) for other emerging economies.

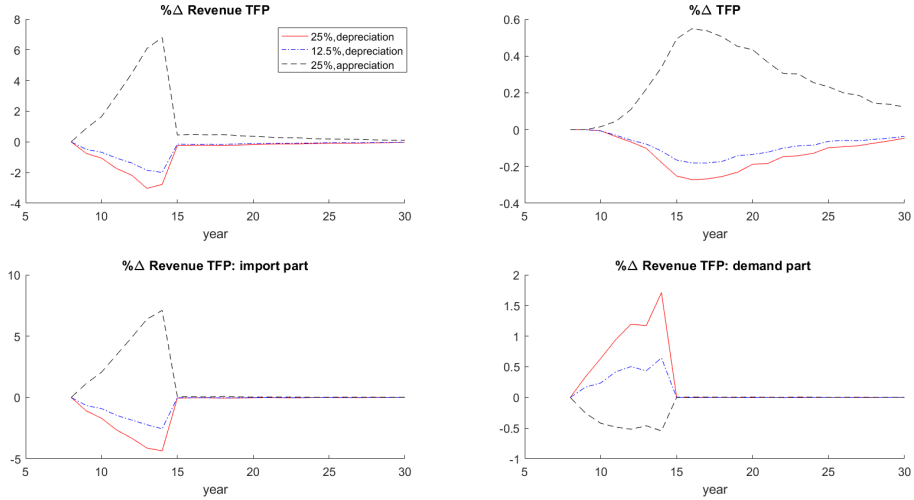
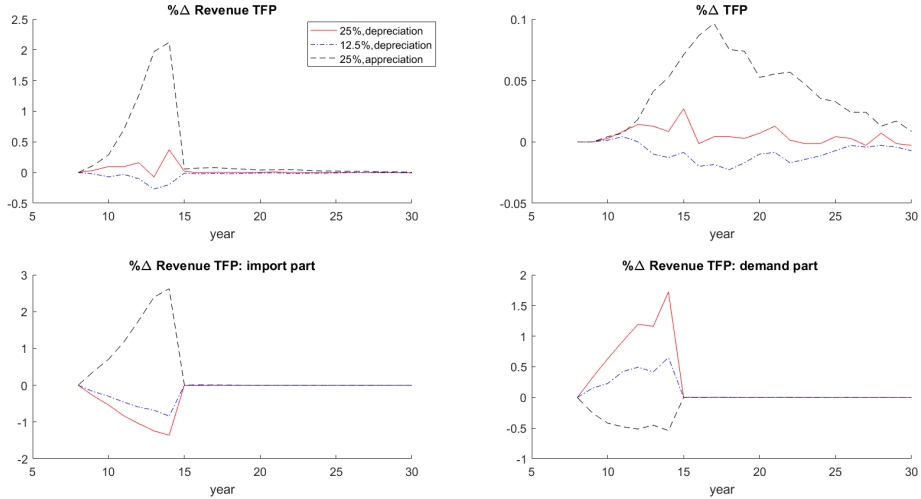


Figure 7: Average effect of an unexpected real depreciation (25%, 12.5%) and appreciation (25%) for industrialized economies.



reduction in TFPR.⁶⁰

In comparison with emerging Asia, firms in this sub-sample are relatively import intensive. This reverses the net effect of the depreciation on firms' profits, which becomes negative and induces firms to reduce their investment in R&D and leads to a subsequent decrease in physical TFP growth.

Industrialized Countries The pattern of long-lasting changes in physical productivity growth due to innovation and merely transitory reactions of the other two components of TFPR growth repeats itself once more. (See Figure 7.) The overall effect of the depreciation on TFPR growth is positive but tiny in comparison with the magnitudes of the responses in emerging economies. In this case, export demand and import TFPR growth are of similar magnitude. The increase in profits induced by a larger volume of exports is compensated by the decrease in profits due to more expensive intermediate-input imports. Since the positive and negative effects of the depreciation on profits roughly cancel each other, R&D investment hardly reacts: changes in physical TFP due to this channel are positive but very close to zero.

8.2 Non-linearities: 12.5% Depreciation

We now simulate a 12.5% depreciation (blue dashed-dotted lines in Figures 4-7).

Emerging Asia The overall impact of the 25% depreciation on firm-level outcomes is more than double in magnitude than that of the 12.5% depreciation: Figure 5 shows that TFPR growth increases by slightly more than 2 percentage points (compared to more than 6 percentage points for the 25% depreciation); physical TFP growth due to innovation is raised by 0.2 percentage points (compared to around 0.5 percentage points); the export-demand component of TFPR growth rises by around 3 percentage points (compared to 8 percentage points); and the import component of TFPR growth decreases by less than 0.5 percentage points (compared to more than 1 percentage point).

Why do larger depreciations in emerging Asia bring about more than proportional increases in profitability in comparison with smaller depreciations? Given the high relative export intensity of this region's firms, the losses from more expensive imported inputs are more than compensated by the profits from better access to export markets. First, holding constant import costs, firm-level variable export profits respond to changes in e with a constant elasticity $\sigma - 1 > 1$ (see Section 3.5). Therefore, disproportionately more firms find it profitable to export for larger depreciations and hence the extensive margin of exports reacts more. Second, the elasticity of $\exp[-\tilde{a}(e)]$ with respect to e becomes smaller with larger depreciations (see Section 3.3), and therefore revenues for importing firms are reduced proportionally less with a larger depreciation. Third, a larger increase in exports subsequent to a larger depreciation induces more firms to import through the complementarity between these two choice variables (an increase in the extensive margin of imports); this partly compensates the negative effect of higher import costs on the use of foreign intermediates (a decrease in the intensive margin of imports). Finally, since profitability increases disproportionately more with a larger depreciation,

⁶⁰The indirect impact of changes in R&D on TFPR via less exports and imports accounts for a TFPR reduction of -0.05%.

physical TFP due to innovation also rises disproportionately more, as the number of firms that start investing in R&D is significantly higher with the larger depreciation.

Other Emerging Economies Unlike in emerging Asia, the impact of a smaller depreciation in other emerging economies is comparatively large. The total (negative) effect of a 12.5% depreciation on TFPR growth (-2 compared to -3 percentage points), physical TFP growth due to innovation (-0.2 compared to -0.3 percentage points) and the import component of TFPR growth (-3 compared to -4.5 percentage points) is proportionally smaller in absolute magnitude than the one of a 25% depreciation. The impact on the export-demand component of TFPR growth is instead relatively larger for a depreciation of larger magnitude (1.8% compared to 0.6%).

Since this region's firms feature a high relative import intensity, depreciations reduce their profitability. Since the elasticity of $exp[-\tilde{a}(e)]$ with respect to e becomes smaller with larger depreciations, the latter have less of a proportional effect on the revenues of importing firms. Thus, larger depreciations have disproportionately smaller negative effects on exports and profits. Besides, this implies that, in the presence of complementarities between export and import decisions, imports decline proportionally less with larger depreciations. Finally, since the average firm's profitability is reduced disproportionately less with the larger depreciation, innovation and thus physical TFP growth also fall disproportionately less.

Industrialized Countries The negative impact of the 12.5% depreciation is larger in absolute terms than the one of the 25% depreciation. Import and export intensities are very similar, so that the larger profitability induced by a depreciation through the export channel is roughly offset by higher import costs. Because of the non-linear effect of a depreciation on the import costs, import costs fall disproportionately less with a larger depreciation. It turns out that for the 12.5% depreciation the import component of TFPR dominates the export component, so that firms become slightly less profitable and thus perform slightly less innovation, reducing physical TFP growth. By contrast, with the 25% depreciation the increase in profits via the export channel dominates the import component and profitability and thus physical TFP growth increase slightly.

8.3 Asymmetries: 25% Appreciation

We now simulate an unanticipated temporary yearly appreciation of 5% for five years with a subsequent sudden 25% depreciation back to the initial level of the RER (see the gray dashed lines in Figures 4-7).

Emerging Asia The effects of an appreciation on average firm-level TFPR growth and its components are opposite to those of a depreciation. (See Figure 5.) The reduction in TFPR growth through lower exports and lower physical TFP growth due to less innovation dominates the positive effect on TFPR growth through more imports. However, the quantitative impact on TFPR growth and its components (TFPR growth falls by at most 2 percentage points, which can be decomposed into a 4 percentage-point drop in export demand, a 1.8 percentage-point increase in TFPR growth due to cheaper imported inputs and a 0.2 percentage-point reduction in physical TFP growth due to less innovation) is just around a third of the size of the corresponding effects of a depreciation of the same absolute magnitude.

Due to the large magnitude of R&D sunk costs relative to that of fixed costs, firms respond more to a positive shock to the net present value of innovation than to a negative one. They try to avoid paying the sunk costs of re-starting innovation in case they stop performing R&D. In other words, R&D has an option value in the face of a negative shock. This effect relates to the classical hysteresis argument made by Baldwin (1988), Baldwin and Krugman (1989) and Dixit (1989). For firms in this region, a depreciation corresponds to a positive shock to R&D profitability, while an appreciation corresponds to a negative one. Thus, in this region physical TFP growth responds more to a depreciation than to an appreciation.⁶¹

Moreover, a depreciation triggers a reduction in imports that is smaller than the increase associated to an appreciation. This is the result of three feedback effects: (i) for a depreciation, the positive change in physical TFP growth due to more innovation mitigates the impact of higher import costs; (ii) the import component of TFPR growth decreases less during a depreciation than it increases for an appreciation of the same magnitude due to substitution effects; (iii) complementarities between exporting and importing activities: since in emerging Asia export intensity is high compared to import intensity, the positive effect of higher exports on imports is larger than the negative effect of lower imports on exports. Finally, a depreciation triggers an increase in exports larger than the decline in exports caused by an appreciation: the extensive margin of exports responds more to a depreciation because of the stronger selection into exporting triggered by the more sizable change in physical TFP growth.

Other Emerging Economies In stark contrast to emerging Asia, the impact of the appreciation on TFPR growth is in this case positive and more than twice as large as the negative effect of the depreciation. As seen in Figure 6, TFPR growth increases by around 6.5 percentage points, compared to the three-percentage-point decline following the depreciation. This effect is composed of a 6.5 percentage-point increase in TFPR growth through increased imports, a 0.5 percentage-point decline through reduced exports and a 0.5 percentage-point increase via larger physical TFP growth due to more innovation. A positive shock to profitability has a larger impact on innovation and thus on physical TFP growth than a negative one.

The explanation of these effects is the mirror image of the emerging-Asia case: since for other emerging economies an appreciation increases the profitability of R&D, while a depreciation reduces it, an appreciation has a larger effect on physical TFP growth than a depreciation due to the option-value effect. Besides, due to complementarities between exporting and importing decisions, the larger import orientation and the smaller export orientation of these economies, the effects of larger imports on exports via the appreciation are more sizeable than the effects of larger exports on imports via the depreciation. Moreover, the increase in physical TFP due to the appreciation leads more firms to select into exporting and importing and thus also raises TFPR growth through these channels.

Industrialized Countries In this case, the impact of RER movements on TFPR growth is quanti-

⁶¹There is also an additional channel via credit constraints: credit constraints are relaxed for more firms during a depreciation than they are tightened during an appreciation because R&D continuation costs are smaller than start-up costs. However, this effect turns out to be quantitatively small in comparison with the asymmetries induced by the option value.

tatively small compared to the other regions and qualitatively similar to the case of other developing countries. (See Figure 7.) The effect of the 25% appreciation on TFPR growth is positive and larger in magnitude compared to the one of a depreciation of equal size. In the case of a depreciation, the negative impact on TFPR growth via the import channel is almost exactly offset by the positive effect through more exports, so that innovation and physical TFP growth are almost unchanged. For an appreciation, the positive effects through cheaper inputs and increased profitability of R&D dominate the negative effects on TFPR growth through reduced exports so that the net effects on TFPR growth are positive but small (TFPR growth increases by two percent and physical TFP growth due to innovation by 0.1). The intuition is very similar to the case of other developing countries.

The model’s predictions for the asymmetric effects of RER depreciations and appreciations are consistent with the corresponding reduced-form estimates, as we show in Appendix Table A-9. In these specifications, we allow for differential effects of RER depreciations and appreciations on firm-level outcomes for each region. In emerging Asia, the effect of RER depreciations is positive, large and highly statistically significant, while RER appreciations have no significant impact on firm-level outcomes. In the other emerging economies, the impact of RER appreciations on firm-level outcomes is instead positive, large and highly significant, while depreciations have no statistically significant effect. Finally, for industrialized countries, neither depreciations nor appreciations have significant effects.

8.4 Decomposition of Physical Productivity Growth: Market-size Effects versus Credit Constraints

Finally, we decompose the effect of the 25% temporary depreciation on physical TFP growth into (i) market-size effects and (ii) relaxed credit constraints. We provide the corresponding results for the five-year depreciation period on Table 12. In emerging Asia, the R&D participation rate increases by 2.6 percentage points during the depreciation. 87% of the new R&D performers start this activity due to a relaxation of credit constraints (firms that found it profitable to do R&D in net-present-value terms, for which the credit constraint was initially binding), while only 13% of the new R&D investment is due to an increase in market size (firms that were initially unconstrained but found it unprofitable to engage in R&D in net-present-value terms, for which it now becomes profitable to perform R&D). By contrast, in the other emerging economies, the R&D participation rate falls by 1.7 percentage points. This change can be decomposed into a 82% reduction due to a tightening of credit constraints and a 18% reduction due to reduced market-size effects.⁶²

8.5 Aggregate Results

Figures A-1-A-3 in the Appendix report the aggregate results of our counterfactuals. We compute these by aggregating the time paths of firm-specific variables using as weights the firms’ market shares

⁶²We do not report the decomposition for industrialized countries, as the R&D participation rate hardly reacts to the depreciation.

Table 12: Elasticity of R&D w.r.t RER, decomposition into market size and financial constraints (25% over 5-year depreciation period).

	Innovation Channel (Change in R&D prob.)	Market size	Financial constraints
emerging Asia	2.6%	13%	87%
Other emerging	-1.7%	18%	82%

prior to the RER depreciation/appreciation episode. Qualitatively, the results are similar to the ones we discussed above: depreciations lead to higher productivity in emerging Asia and lower productivity in other emerging countries whereas appreciations induce the opposite results in the two regions; the effects of RER changes are much weaker for industrialized countries; finally, the asymmetric effects of depreciations and appreciations also apply here.

Quantitatively, the aggregate effects are stronger than the average effects. This is due to the fact that firms responding to RER movements in terms of exporting, importing and R&D tend to be relatively productive and have large market shares. The reaction of these firms to changes in the RER is not only more likely, but also carries a larger weight when aggregating firms' responses.

9 Extensions and Robustness

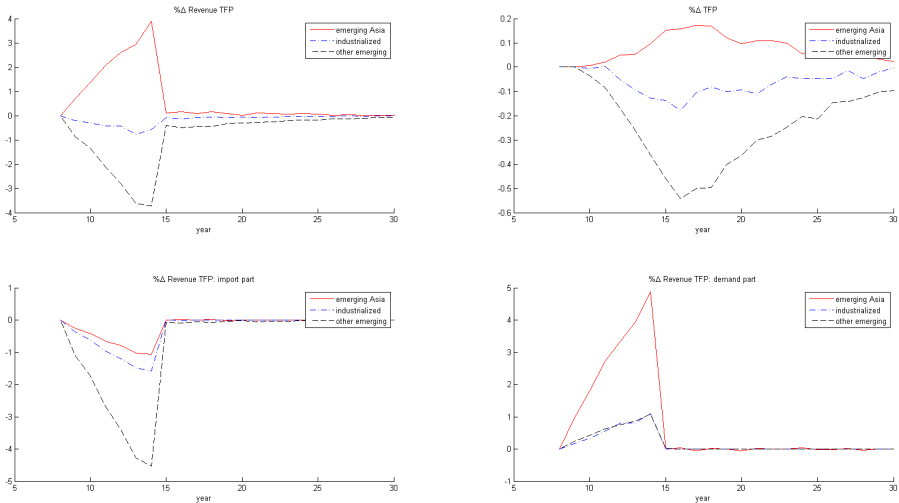
9.1 Sunk Export Costs

The literature suggests that sunk export costs are important for understanding the quantitative impact of real exchange rate fluctuations on export dynamics (see, e.g., Alessandria and Choi, 2007). We therefore introduce this feature into our model in order to understand whether it changes its quantitative implications. Our modelling strategy for export and R&D decisions is inspired by Aw, Roberts and Xu (2011). In contrast with them, we also allow for a static import decision and introduce credit constraints exclusively for the R&D decision, as in our baseline model. We lay out the details of this model in Appendix A-1.2 and only provide a discussion of the simulation results in the main text. Lack of information on export entry decisions in our data prevents us from estimating the magnitude of export sunk costs within our model. Thus, we use the estimates from Aw, Roberts and Xu (2011) to calibrate this parameter. They find that mean export sunk costs are roughly 4.61 times mean export fixed costs.⁶³ The remaining structural parameters are re-estimated following the same procedure as for our main model. Parameter estimates are generally similar to those of our main model, with the exception of per-period export fixed costs (not reported). In the presence of sunk export costs, these must be smaller to keep the export participation rate constant.

We now discuss the counterfactual simulation results for this model, reported in Figure 8. For

⁶³Results are similar when, alternatively, setting mean export sunk costs proportional to mean R&D sunk costs, using again estimates by Aw, Roberts and Xu (2011).

Figure 8: Sunk export costs: average effect of an unexpected real depreciation (25%) in the three regions.



brevity purposes we focus on the baseline scenario of a 25% RER depreciation.

Emerging Asia Like in the model without export sunk costs, a depreciation triggers a positive response of both average revenue and physical TFP, and export demand growth, while the import channel reacts negatively. However, the magnitude of the positive responses of the individual components is smaller. This is not surprising since the export sunk cost creates an option value of waiting and makes the export decision less responsive to changes in the RER. As a consequence, the reaction of profits and cash flow is also less pronounced, which implies that less firms start doing innovation.

Other Emerging Economies Again, in this region the depreciation produces a negative profitability shock. Compared to the model without export sunk costs, export demand increases by less, while revenue and physical TFP growth decrease by more. The smaller responsiveness of exports due to the export sunk costs implies that increases in export profits compensate less for the rise in import costs. Profits therefore fall by more than without export sunk costs inducing an even larger negative response of innovation due to a more pronounced tightening of credit constraints.

Industrialized Countries Finally, in this case the magnitudes of the responses are again very small. However, while the export and the import components were exactly offsetting each other in the model without export sunk costs, exports become now less responsive to the depreciation compared to imports, making the overall impact on profitability negative. As a result, physical and revenue TFP growth decline slightly.

9.2 Foreign-currency Borrowing

An alternative explanation for the heterogeneity of RER effects on firm-level outcomes across regions lies in the fact that firms, in particular in emerging economies, often borrow in foreign currency. In this case, a RER depreciation makes foreign borrowing more expensive and may thus discourage R&D investment for firms that finance a large share of their debt in foreign currency. While firms in industrialized countries mostly borrow in their own currency, we employ the Worldbank’s World Enterprise Survey to show that firms in Latin America and Eastern Europe are far more exposed to foreign-currency borrowing than firms in emerging Asia. As explained in the data section, we cross-checked the data with several alternative local sources.⁶⁴

In the first column of Table 9.2, we report the OLS regression results from running the share of manufacturing firms’ foreign-currency liabilities in total liabilities on dummies for emerging Asia and other emerging economies (Latin America and Eastern Europe). The latter’s average share of foreign borrowing is roughly twice as large as that of the former (around 20% compared to 10%). In column (2) we add interactions of region dummies with exporter and importer status dummies. Not surprisingly, in both regions exporting firms exhibit a much larger average share of foreign-currency borrowing than importing firms or firms that do not engage in international trade. Still, the overall effect suggests that firms from emerging Asia are much less dependent on foreign-currency borrowing than firms from other emerging countries. Thus, it is possible that RER depreciations lead to different effects across regions not only because of differences in export and import orientation, but also because of differential exposure of firms to foreign-currency borrowing. Given their stronger reliance on such sources of financing, firms from other emerging economies experience an increase in borrowing costs in the event of a depreciation in comparison with firms from emerging Asia.⁶⁵

We extend our structural model to consider foreign-currency borrowing. We assume that firms contract loans for period t in period $t - 1$. Lenders loan a multiple θ of the firms’ period- t expected profits $E_{t-1}\Pi_{i,t}$. A share λ is borrowed by the firm in domestic consumption units and a share $1 - \lambda$ is borrowed in foreign consumption units, where λ is an exogenous parameter that we allow to vary by region and trade status.⁶⁶ In the event of a RER depreciation (that is, $e_{t-1}/e_t < 1$), the corresponding credit constraint becomes tighter, as a given amount of expected profits in domestic consumption units elicits a smaller amount of credit in foreign consumption units. (Implicit is the assumption that lenders, at the moment in which e_t is realized, do not have time to revise expectations.) The credit constraint

⁶⁴For our time period, we analyze as well foreign currency patterns in Hungary and Colombia. For France, according to BIS, most firms tend to borrow in local currency.

⁶⁵The more positive effects of depreciations on exporters and the more negative effects on importers found above cannot be rationalized with differential foreign currency exposure, since exporters borrow more in foreign currency, while importers are not different from firms that do not trade.

⁶⁶We abstract from the firm’s endogenous choice in terms of the currency denomination of its debt. See, e.g., Salomão and Varela, 2017.

Table 13: Foreign debt shares by region

	(1)	(2)
	foreign debt share	foreign debt share
emerging Asia _c	10.61*** (0.338)	4.820*** (0.462)
emerging Asia _c × exporter _f		18.21*** (0.876)
emerging Asia _c × importer _f		0.433 (0.626)
other emerging _c	19.09*** (0.386)	14.15*** (0.581)
other emerging _c × exporter _f		24.90*** (1.073)
other emerging _c × importer _f		-0.919 (0.759)
Observations	14,554	14,554
R-squared	0.201	0.271
Cluster	Firm	Firm

Notes: The dependent variable in columns (1)-(5) is the foreign debt share for manufacturing firms in emerging Asia and other emerging economies (Latin America, Eastern Europe) in the 2016 World Enterprise Survey.

now is as follows:⁶⁷

$$\theta \epsilon_{i,t} \left[\lambda + (1 - \lambda) \frac{E_{t-1}(e_t)}{e_t} \right] E_{t-1} \Pi_{i,t} \geq I_{iRD,t} [f_{RD,0} (1 - I_{iRD,t-1}) + f_{RD} I_{iRD,t-1}]. \quad (29)$$

We calibrate the model by using the baseline model's parameter estimates (see Tables 7-9 and setting the foreign debt shares for emerging markets equal to the estimated ones for each region and trade-participation status, as reported in column 2 of Table 9.2. We set foreign debt shares for industrialized countries to zero.⁶⁸ We simulate a 25% depreciation as described above. The corresponding effects, reported in Figure 9, are qualitatively and quantitatively comparable to those of our baseline counterfactuals. TFPR growth is roughly the same for emerging Asia. The negative impact of the depreciation on TFPR in other emerging economies becomes slightly larger, but the most important channel continues to be importing. One would need to assume a foreign-debt share much higher than in the data for the tightening of the credit constraint through valuation effects to become dominant, and innovation and physical TFP to decline on impact upon a depreciation. Thus, our results are robust to introducing foreign-currency borrowing.

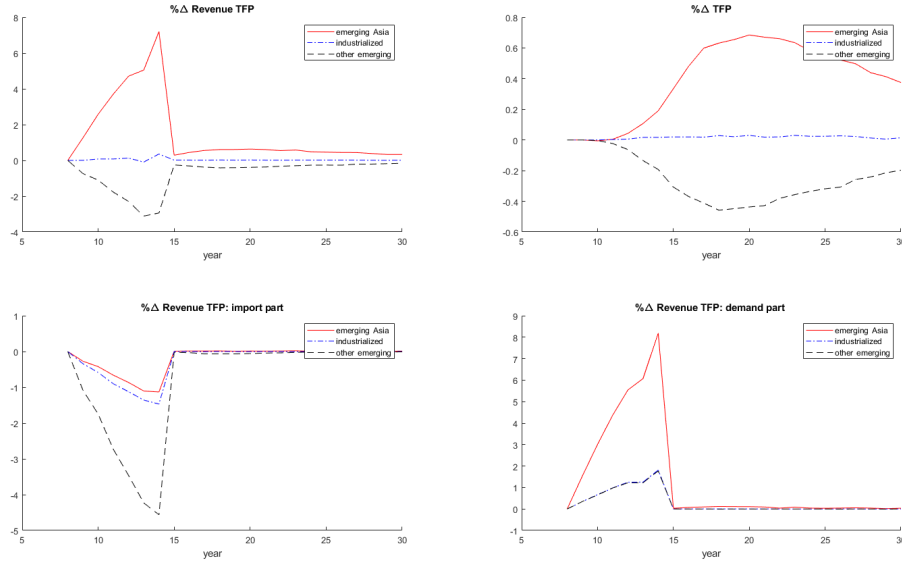
⁶⁷Under the assumption that the firm makes repayments so as to keep a fraction λ of domestic debt and a fraction $1 - \lambda$ of foreign debt, the firm's budget constraint needs to be modified as follows:

$$B_{i,t+1} + \Pi_{i,t} - I_{iRD,t} [f_{RD,0} (1 - I_{iRD,t-1}) + f_{RD} I_{iRD,t-1}] = (1 + r) [\lambda + (1 - \lambda) e_t/e_{t-1}] B_{i,t}, \quad B_{i,t} > 0.$$

The term e_t/e_{t-1} represents the effect of a RER depreciation on the value of the firm's outstanding debts in terms of domestic consumption. Notice, however, that our assumptions on the firm's behavior regarding dividends and debt repayment prevent RER changes from affecting the firm's credit constraint via the firm's stock of outstanding debt.

⁶⁸Results obtained by ignoring trade status in the calibration (column 1 of Table 9.2) yield similar results.

Figure 9: Foreign debt: average effect of an unexpected real depreciation (25%) in the three regions.



9.3 Sensitivity Checks

We now present robustness checks regarding the values of the calibrated parameters. We consider different values for the elasticity of demand (σ), the elasticity of substitution between domestic and imported intermediates (ε) and the return to R&D (α_1). We vary each of these parameters one by one and re-estimate the structural model given the new parameter value. We report results for the indirect-inference parameter estimates and the simulated model statistics in Appendix Tables A-10 to A-12.

We first consider a higher value for the elasticity of demand within the reasonable range for this parameter ($\sigma = 6$ instead of $\sigma = 4$), while leaving the other preset parameters at their baseline values. Increasing σ makes the sales distribution more sensitive to the underlying TFP differences and thus reduces the estimate of the standard deviation of the TFP process σ_u required to fit the firm-size distribution. To keep the R&D continuation and start probabilities fixed, this then requires a lower estimate of the R&D sunk cost $f_{RD,0}$. The remaining parameter estimates are not affected much and the fit of the model is overall similar to the baseline case.

Next, we change the elasticity of substitution between intermediates ε and consider a value of 6 instead of 4, which is still within the range of values estimated by Halpern et al., 2015. Increasing ε makes imports more sensitive to price-adjusted quality and thus requires us to adjust downward the estimate of the quality of imported intermediates A to keep the import to sales ratio fixed. This then requires a lower estimate for the import fixed cost f_m in order to hold the import probability constant. The remaining parameter estimates are not significantly altered and the model fit is overall

not changed much compared to the baseline case.

Third, we reduce the short-run return to R&D from 6 to 4 percent (this is the lower bound of our estimates from the production-function estimation). A lower return to R&D mainly requires a downward adjustment in the R&D sunk cost $f_{RD,0}$ to keep the R&D start and continuation rates roughly similar. However, with a lower R&D sunk cost the R&D continuation rate is reduced and very low in comparison with the targeted rate.

Finally, our results are also robust to considering higher or lower real interest rates (15% and 5%) for discounting firm-level profits. As the estimated parameters are hardly affected, we do not report these results for brevity. The decomposition of innovation responses into credit constraints and market size slightly shifts (results available upon request).

Overall, the model fit is robust to altering the value of these calibrated parameters – alternative values give similar model fit. In addition, this robustness also implies that these parameters need to be set outside of the indirect-inference procedure because the targeted statistics are not very informative about their values.

10 Conclusions

This paper evaluates firms' responses to changes in the real exchange rate. We limit the analysis to manufacturing firms as we exploit a detailed firm-level dataset for a large set of countries for the period 2001-2010. Our focus on the firm level enables us to tease the micro channels through which the aggregate economic effects of changes in the real exchange rate operate. We also establish that the relative strength of these channels varies across regions and types of firms.

For the average firm in emerging Asia, real depreciations are associated with faster growth in revenue-based productivity, sales and cash flow; a higher probability to engage in R&D; and higher export entry rates. In other emerging markets (Latin America and Eastern Europe), real depreciations have instead a significantly negative effect on firm-level outcomes. Finally, in industrialized countries real depreciations have no significant effects on average firm-level outcomes. When conditioning on trade participation, we find that exporters are positively affected by real depreciations, while importers are hurt. We show that firms in emerging Asia are relatively more likely to export and relatively more export intensive than firms in other emerging economies and industrialized countries. Our firm-level evidence also establishes that a firm's R&D choice depends on the level of internal cash flow, and the more so the less developed local financial markets are.

Motivated by these facts, we build and estimate a dynamic firm-level model in which current profits relax borrowing constraints and allow firms to overcome the fixed-cost hurdle for financing R&D. Real depreciations raise the cost of importing intermediates, but raise demand and exports. Depending on the relative export orientation of firms, the RER affects profits and thereby R&D activity one way or another. The model enables us to decompose the effects of RER changes on productivity growth into these channels; explain regional heterogeneity in the effects of RER changes in terms of differences in

the parameters that affect export and import intensities and financial constraints; and quantitatively evaluate the different mechanisms by providing counter-factual simulations.

Regarding the latter, we obtain a number of interesting results. First, as in our reduced-form evidence, RER changes have different impacts depending on the relative export orientation of regions and the prevalence of credit constraints: while in emerging Asia a real depreciation leads to more R&D and an increase in physical productivity, other emerging economies experience effects with the opposite sign; finally, in industrialized economies opposing effects operating through the export and import channels largely offset each other. Second, the effects on physical productivity are rather persistent, extending far beyond the length of the real depreciation. Finally, we also show that depreciations and appreciations yield asymmetric effects due to the presence of sunk costs to R&D, which we also uncover in our reduced-form evidence.

Our analysis remains silent about welfare effects, as we take movements in the real exchange rate as given. We also take the origins of the regional differences in export and import behavior and financial constraints as the result of exogenously determined parameters. Still, the huge heterogeneity of effects across regions for similar changes in RER suggests that some aspects of our work may be informative for policy-making. Triggering a depreciation would perhaps seem to be a reasonable policy for (export-intensive) emerging Asia but certainly not for (import-intensive) Latin America and Central and Eastern Europe, where engineering an appreciation may potentially have positive effects on productivity growth. However, as emerging-country firms follow the path of industrialized-country firms and become ever more integrated into global value chains, manipulating the RER will be less effective, as effects of different signs will offset each other. At the same time, increased use of hedging through simultaneous participation in exporting and importing may allow firms to become less vulnerable to exchange-rate shocks. Finally, the non-linearities and asymmetries in the effects of RER appreciations and depreciations we have uncovered suggest that the link between RER changes and macroeconomic performance might be much more nuanced than usually thought.

We limited the analysis to manufacturing firms due to data restrictions. Future work should aim to study the response of firms in the services industry, too, as it is becoming the most important sector both in industrialized and many emerging markets.

References

- [1] Aghion, Philippe, Philippe Askenazy, Nicolas Berman, Gilbert Clette and Laurent Eymard, 2012, “Credit Constraints and the Cyclicity of R&D Investment: Evidence from France,” *Journal of the European Economic Association*, 10(5), 1001-1024.
- [2] Aghion, Philippe, Antonin Bergeaud, Matthieu Lequien and Marc Melitz, 2017, “The Impact of Exports on Innovation: Theory and Evidence,” working paper.
- [3] Alessandria, George and Horag Choi, 2007, “Do Sunk Costs for Exporting Matter for Net Export Dynamics?,” *Quarterly Journal of Economics*, 122 (1), 289-336, 2007.
- [4] Alessandria, George, Joseph P. Kaboski and Virgiliu Midrigan, 2010, “Inventories, Lumpy Trade, and Large Devaluations,” *American Economic Review*, 100(5), 2304-2339.

- [5] Alfaro, Laura, Anusha Chari and Fabio Kanczuk, 2017, "The Real Effects of Capital Controls: Firm-Level Evidence from a Policy Experiment," *Journal of International Economics*, 108, 191-210.
- [6] Alfaro, Laura, Paola Conconi, Harald Fadinger, and Andrew Newman, 2016, "Do Price Determine Vertical Integration?" *Review of Economic Studies*, 83(3), 855-888.
- [7] Alfaro, Laura, and Maggie X. Chen, 2018, "Selection and Market Reallocation: Productivity Gains from Multinational Production" *American Economic Journal: Economic Policy*, 10(2), 1-38.
- [8] Alvarez and Hansen, Erwin, 2017, "Corporate Currency Risk and Hedging in Chile: Real and Financial Effects," *Inter-American Development Bank Working Paper Series IDB-WP-769*. Washington DC, February.
- [9] Amiti, Mary, Oleg Itskhoki and Jozef Konings, 2014, "Importers, Exporters, and Exchange Rate Disconnect," *American Economic Review*, 104(7), 1942-78.
- [10] Amiti, Mary and Jozef Konings, 2007, "Trade Liberalization, Intermediate Inputs, and Productivity: Evidence from Indonesia," *American Economic Review*, 97(5), 1611-1638.
- [11] Autor, David, David Dorn, Gordon H. Hanson, Pian Shu and Gary Pisano, 2016, "Foreign Competition and Domestic Innovation: Evidence from U.S. Patents," *NBER WP #22879*.
- [12] Aw, Bee, Mark Roberts and Daniel Xu, 2011, "R&D Investment, Exporting and Productivity Dynamics," *American Economic Review*, 101(4), 1312-44.
- [13] Baldwin, Richard, 1988, "Hysteresis in Import Prices: The Beachhead Effect," *American Economic Review*, 78(4), 773-785.
- [14] Baldwin, Richard, 2016, *The Great Convergence. Information Technology and the New Globalization*, Harvard University Press.
- [15] Baldwin, Richard and Paul Krugman, 1989, "Persistent Trade Effects of Large Exchange Rate Shocks," *Quarterly Journal of Economics*, 104(4), 635-654
- [16] Barajas et al., 2016, "Balance Sheet Effects in Colombian Non-Financial Firms," *Inter-American Development Bank Working Paper Series IDB-WP-740*. Washington DC, October.
- [17] Barattieri, Alessandro, Matteo Cacciatore, and Fabio Ghironi, 2017, "Protectionism and the Business Cycle," *Working Paper*.
- [18] Benigno, Gianluca, and Luca Fornaro, 2012, "Reserve Accumulation, Growth and Financial Crises," *manuscript*.
- [19] Benigno, Gianluca, Huigang Chen, Christopher Otrok, Alessandro Rebucci, and Eric Young, 2016, "Optimal Capital Controls and Real Exchange Rate Policies: A Pecuniary Externality Perspective," *Journal of Monetary Economics*, 84(C), 147-165.
- [20] Berman, Nicolas, Philippe Martin and Thierry Mayer, 2012, "How Do Different Exporters React to Exchange Rate Changes?" *Quarterly Journal of Economics*, 127(1), 437-492.
- [21] Blaum, Joaquin, Claire LeLarge and Michael Peters, 2015, "The Gains from Input Trade in Firm-Based Models of Importing," *NBER WP #21504*
- [22] Bloom, Nicholas, Mirko Draca, and John van Reenen, 2015, "Trade Induced Technical Change? The Impact of Chinese Imports on innovation, IT and Productivity," *Review of Economic Studies*, 83(1), 87-117.
- [23] Bøler, Esther Ann, Andreas Moxnes, and Karen Helene Ulltveit-Moe, 2015, "R&D, International Sourcing, and the Joint Impact on Firm Performance," *American Economic Review*, 105 (12), 3704-39.
- [24] Brito, Steve, Nicolas E. Magud, and Sebastian Sosa. 2018, "Real Exchange Rates, Economic Complexity, and Investment," *IMF Working Paper 18/107*.
- [25] Burstein, Ariel, and Gita Gopinath, 2014, "International Prices and Exchange Rates," in Gopinath, G., Helpman, E., and Rogoff, K. (Eds.): *Handbook of International Economics Volume 4*, Amsterdam: Elsevier.

- [26] Bustos, Paula, 2011, "Trade Liberalization, Exports and Technology Upgrading: Evidence on the Impact of MERCOSUR on Argentinean Firms," *American Economic Review*, 101(1), 304-340.
- [27] Cavallo, Alberto, 2017 "Retail Prices and the Real Exchange Rate," working paper.
- [28] Céspedes, Luis F., Roberto Chang and Andrés Velasco, 2004 "Balance Sheets and Exchange Rate Policy," *American Economic Review* 94(4), 1183-1193.
- [29] Chinn, Menzie D. and Hiro Ito, 2006, "What Matters for Financial Development? Capital Controls, Institutions, and Interactions," *Journal of Development Economics*, 81(1), 163-192.
- [30] Cosar, Kerem, Nezh Guner and James Tybout, 2016 "Firm Dynamics, Job Turnover, and Wage Distributions in an Open Economy," *American Economic Review*, 106(3), 625-63.
- [31] Costinot, Arnaud, and Andrés Rodríguez-Clare, 2014, "Trade Theory with Numbers: Quantifying the Consequences of Globalization" in Gopinath, G., Helpman, E., & Rogoff, K. (Eds.): *Handbook of International Economics Volume 4*, Amsterdam: Elsevier
- [32] Defever, Fabrice, and Alejandro Riaño, 2017 "Twin Peaks," working paper.
- [33] De Loecker, Jan, 2011, "Product Differentiation, Multi-Product Firms and Estimating the Impact of Trade Liberalization on Productivity," *Econometrica*, 79(5), 1407-1451.
- [34] Diaz Alejandro, Carlos F., 1965, *Exchange-rate Devaluation in a Semi-industrialized Country. The Experience of Argentina 1955-1961*, MIT Press.
- [35] Dix-Carneiro, Rafael, 2014, "Trade Liberalization and Labor Market Dynamics," *Econometrica*, 82(3).
- [36] Dixit, Avinash, 1989, "Entry and Exit Decisions under Uncertainty," *Journal of Political Economy*, 97(3), 620-638
- [37] Eichengreen, Barry, 2008, "The Real Exchange Rate and Economic Growth," Commission on Growth and Development Working Paper No. 4, The World Bank
- [38] Ekholm, Karolina, Andreas Moxnes and Karen Helene Ulltveit-Moe, 2012, "Manufacturing Restructuring and the Role of Real Exchange Rate Shocks: A Firm-Level Analysis," *Journal of International Economics*, 86(1), 101-117.
- [39] Feenstra, Robert C., Robert Inklaar and Marcel P. Timmer, 2015. "The Next Generation of the Penn World Table," *American Economic Review*, 105(10), 3150-82.
- [40] Fernandes, A., Freund, C. and M. Pierola, 2016. "Exporter Behavior, Country Size and Stage of Development: Evidence from the Exporter Dynamics Database," *Journal of Development Economics*, 119, 121-137.
- [41] Fitzgerald, Doireann, and Stefanie Haller, 2014, "Pricing-to-Market: Evidence From Plant-Level Prices," *Review of Economic Studies*, 81(2), 761-786.
- [42] Gopinath, Gita and Brent Neimann, 2014, "Trade Adjustment and Productivity in Large Crises," *American Economic Review*, 2014, 104(3), 793-831.
- [43] Gorodnichenko, Yuriy and Monika Schnitzer, 2013, "Financial Constraints and Innovation: Why Poor Countries Don't Catch Up," *Journal of European Economic Association*, 11, 1115-1152
- [44] Gouriéroux, Christian, Montfort, Alain and Eric Renault, 1993, "Indirect Inference," *Journal of Applied Econometrics*, 8, 85-118.
- [45] Henry, Peter Blair, 2008, "Comment," *Brookings Papers on Economic Activity*, Fall, 413-420.
- [46] Halpern, László, Miklós Koren and Adam Szeidl, 2015, "Imported Inputs and Productivity," *American Economic Review*, 105(12), 3660-3703.
- [47] Kohn David, Fernando Leibovici, and Michal Szkup, 2017, "Financial Frictions and Export Dynamics in Large Devaluations," Working Paper.
- [48] Lerner, Josh, and Bronwyn H Hall, 2010, "The Financing of R&D and Innovation." In *Handbook of the Economics of Innovation*. Vol. 1, edited by Bronwyn Hall and Nathan Rosenberg. Elsevier.
- [49] Lileeva, Alla and Daniel Treffer, 2010, "Improved Acces to Foreign Markets Raises Plant-Level Productivity... For Some Plants," *Quarterly Journal of Economics*, 125(3), 1051-1099.

- [50] Magud, Nicolas, Carmen Reinhart, and Kenneth Rogoff, 2011, "Capital Controls: Myth and Reality? A Portfolio Balance Approach," NBER Working Paper No. 16805.
- [51] Manova, Kalina, 2013, "Credit Constraints, Heterogeneous Firms, and International Trade," *Review of Economic Studies* 80, 711-744.
- [52] Mendoza, Enrique and Viven Yue, 2012, "A General Equilibrium Model Of Sovereign Default and Business Cycles" *Quarterly Journal of Economics*, 127(2), 889-946.
- [53] Midrigan, Virgiliu, and Daniel Yi Xu, 2014, "Finance and Misallocation: Evidence from Plant-Level Data," *American Economic Review*, 104(2), 422-458.
- [54] Rodrik, Dani, 2008, "The Real Exchange Rate and Economic Growth," *Brookings Papers on Economic Activity*, Fall, 365-412.
- [55] Salomão, Juliana, and Liliana Varela, 2017, "Exchange Rate Exposure and Firm Dynamics," Working paper.
- [56] Valle et al. 2017, "The Correlation Effect between Commodity Prices and Exchange Rate for Brazilian Firms' Balance Sheets," *Inter-American Development Bank Technical Note IDB-TN-1168*. Washington DC, January.
- [57] Woodford, Michael, 2008, "Comment," *Brookings Papers on Economic Activity*, Fall, 420-437.

Appendix

A-1.1 Model

This appendix presents the small-open-economy model that leads to a number of results we have used implicitly in section 3.

A-1.1.1 Preferences, Technologies and Market Environment

Each country has a representative consumer who maximizes a Cobb-Douglas per-period utility:

$$U_t = \left(\frac{C_{NT,t}}{\alpha_{NT}} \right)^{\alpha_{NT}} \left(\frac{D_{O,t}}{\alpha_O} \right)^{\alpha_O} \left(\frac{D_{T,t}}{\alpha_T} \right)^{\alpha_T}, \quad (\text{A-1.1})$$

$\alpha_j \in (0, 1)$ for all j , $\sum_j \alpha_j = 1$. $C_{NT,t}$, $D_{O,t}$ and $D_{T,t}$ denote consumption of, respectively, a non-traded, a numéraire and a manufacturing good; t denotes time. The non-traded and numéraire sectors are perfectly competitive. The manufacturing sector features differentiated varieties produced under monopolistic competition. The consumption-based price index associated to this utility function is $P_t = P_{NT,t}^{\alpha_{NT}} P_{O,t}^{\alpha_O} P_{T,t}^{\alpha_T}$. We take a small-open-economy approach whereby countries face given foreign prices and a given foreign price index P_t^* . Stars denote foreign variables. The RER is defined as P_t^*/P_t . Thus, given our assumptions, changes in P_t also reflect changes in the real exchange rate.

A-1.1.2 Numéraire and Non-traded Sectors

The numéraire good is freely traded and produced with technology

$$Y_{O,t} = e_t^{-1} (K_{O,t}/\beta_k)^{\beta_k} (L_{O,t}/\beta_l)^{\beta_l} (X_{O,t}/\beta_m)^{\beta_m}, \quad (\text{A-1.2})$$

$\beta_h > 0$, $\{h = k, l, m\}$, $\sum_h \beta_h = 1$. $K_{O,t}$, $L_{O,t}$, and $X_{O,t}$ respectively denote capital, labor and a domestically produced intermediate input employed by the numéraire sector. e_t is a shifter inversely related to the sector's productivity. All countries produce the numéraire good. Since $P_{O,t} = 1$, an increase in e_t makes domestic production factors cheaper. The non-traded sector is produced with technology $Y_{NT,t} = (K_{NT,t}/\beta_k)^{\beta_k} (L_{NT,t}/\beta_l)^{\beta_l} (X_{NT,t}/\beta_m)^{\beta_m}$. We assume that non-tradables can be used for final non-traded consumption or as the domestic intermediate input X_t , which implies $P_{NT,t} = P_{X,t} = e_t^{-1}$.

A-1.1.3 Aggregate Prices and the Real Exchange Rate

The domestic consumption-based price of the manufacturing CES aggregator is

$$P_T = \left[\int_{i \in \Omega_{T,NI}} p_i^{1-\sigma} di + \int_{i \in \Omega_{T,I}} p_i^{1-\sigma} di + \int_{i \in \Omega_T^*} p_i^{*1-\sigma} di \right]^{\frac{1}{1-\sigma}}. \quad (\text{A-1.3})$$

Define the price of imported goods $P_T^* = \left[\int_{i \in \Omega_T^*} p_i^{*1-\sigma} di \right]^{\frac{1}{1-\sigma}}$ and the price of domestic goods

$$P_{TH} = P_{T,NI} \left[1 + (P_{T,I}/P_{T,NI})^{1-\sigma} \right]^{\frac{1}{1-\sigma}}, \quad (\text{A-1.4})$$

where $P_{T,NI} = e^{-1} \Delta_{T,NI}$, $P_{T,I} = e^{-1} (P_M/P_X)^{\beta_m} \Delta_{T,I}$, $\Delta_{T,NI} \equiv \frac{\sigma}{\sigma-1} \left[\int_{i \in \Omega_{T,NI}} \exp[\omega_i(\sigma-1)] di \right]^{\frac{1}{1-\sigma}}$ and $\Delta_{T,I} \equiv \frac{\sigma}{\sigma-1} \left[\int_{i \in \Omega_{T,I}} \exp[\omega_i(\sigma-1)] di \right]^{\frac{1}{1-\sigma}}$. One can express P_T as

$$P_T = P_{T,NI} \left[1 + (P_{T,I}/P_{T,NI})^{1-\sigma} \right]^{\frac{1}{1-\sigma}} \left[1 + \frac{P_T^{*1-\sigma}}{(P_{T,NI})^{1-\sigma} \left[1 + (P_{T,I}/P_{T,NI})^{1-\sigma} \right]} \right]^{\frac{1}{1-\sigma}}. \quad (\text{A-1.5})$$

Substituting from the definitions of $P_{T,NI}$, $P_{T,I}$, and P_T^* , imposing $\varepsilon = \sigma$ and manipulating the resulting expression yields $P_T = e^{-1} \Delta_{T,NI} \Gamma^{\frac{1}{1-\sigma}}$, where

$$\Gamma \equiv \left[1 + \left[1 + \left(\frac{e}{A} \right)^{1-\sigma} \right]^{\beta_m} \left(\frac{\Delta_{T,I}}{\Delta_{T,NI}} \right)^{1-\sigma} + \left(\frac{e P_T^*}{\Delta_{T,NI}} \right)^{1-\sigma} \right]. \quad (\text{A-1.6})$$

e has a *direct* negative effect on P_T via e^{-1} , and a number of *indirect* effects that operate through (1) the prices of imported final goods, $e P_T^*$, and intermediate inputs, $\left[1 + (Ae^{-1})^{\sigma-1} \right]$, and (2) the extensive margins of $\Delta_{T,NI}$ and $\Delta_{T,I}$. Changes in ω_i only have lagged effects on P_T , as they operate with a time lag via the innovation process.

Taking logs, $\ln P_T = -\ln(e) + \ln \Delta_{T,NI} + \frac{1}{1-\sigma} \ln \Gamma$. Define $\tilde{X} = \ln X - \ln \bar{X}$ as the log deviation of variable X from its steady state \bar{X} :

$$\tilde{P}_T = -\tilde{e} + \tilde{\Delta}_{T,NI} + \frac{1}{1-\sigma} \tilde{\Gamma}. \quad (\text{A-1.7})$$

Log-linearizing $\Gamma(\cdot)$,

$$\tilde{\Gamma} \approx (1-\sigma) \left[\left[\bar{\Gamma}_2 \frac{\beta_m (\bar{e}/A)^{1-\sigma}}{1 + (\bar{e}/A)^{1-\sigma}} + \bar{\Gamma}_3 \right] \tilde{e} + \bar{\Gamma}_2 \tilde{\Delta}_{T,I} - (\bar{\Gamma}_2 + \bar{\Gamma}_3) \tilde{\Delta}_{T,NI} \right], \quad (\text{A-1.8})$$

where

$$\bar{\Gamma}_2 \equiv \left[1 + (\bar{e}/A)^{1-\sigma} \right]^{\beta_m} (\bar{\Delta}_{T,I}/\bar{\Delta}_{T,NI})^{1-\sigma} = (\bar{P}_{T,I}/\bar{P}_{T,NI})^{1-\sigma}, \quad (\text{A-1.9})$$

$$\bar{\Gamma}_3 \equiv (\bar{e} \bar{P}_T^*/\bar{\Delta}_{T,NI})^{1-\sigma} = (\bar{P}_T^*/\bar{P}_{T,NI})^{1-\sigma}, \quad (\text{A-1.10})$$

$$\bar{\Gamma} \equiv 1 + \bar{\Gamma}_2 + \bar{\Gamma}_3. \quad (\text{A-1.11})$$

Plugging back into (A-1.7),

$$\tilde{P}_T \approx \bar{\Gamma}^{-1} \left[- \left[1 + \bar{\Gamma}_2 \left(1 - \frac{\beta_m (\bar{e}/A)^{1-\sigma}}{1 + (\bar{e}/A)^{1-\sigma}} \right) \right] \tilde{e} + \tilde{\Delta}_{T,NI} + \bar{\Gamma}_2 \tilde{\Delta}_{T,I} \right]. \quad (\text{A-1.12})$$

Notice that the direct effect $-\tilde{e}$ is of a larger magnitude than the indirect effects provided changes in e do not bring about large changes in the extensive margins of $\Delta_{T,NI}$ and $\Delta_{T,I}$. If we therefore ignore the last two terms of this equation and $1 + \bar{\Gamma}_2$ is large relative to $\bar{\Gamma}_3$, then $\tilde{P}_T \approx -\tilde{e}$.

Finally, plugging the results obtained above for P_T into aggregate consumption-based price index $P = P_{NT}^{\alpha_{NT}} P_O^{\alpha_O} P_T^{\alpha_T}$ yields

$$\ln P = -(\alpha_{NT} + \alpha_T) \ln e + \alpha_T \ln \Delta_{T,NI} + \alpha_T \frac{1}{1-\sigma} \ln \Gamma. \quad (\text{A-1.13})$$

$$\begin{aligned} \tilde{P} &= -(\alpha_{NT} + \alpha_T) \tilde{e} + \alpha_T \tilde{\Delta}_{T,NI} + \alpha_T \frac{1}{1-\sigma} \tilde{\Gamma} = \\ &\approx - \left[\alpha_{NT} + \alpha_T \frac{\left[1 + \bar{\Gamma}_2 \left(1 - \beta_m \frac{(\bar{e}/A)^{1-\sigma}}{1 + (\bar{e}/A)^{1-\sigma}} \right) \right]}{\bar{\Gamma}} \right] \tilde{e} + \alpha_T \frac{1}{\bar{\Gamma}} \tilde{\Delta}_{T,NI} + \alpha_T \frac{\bar{\Gamma}_2}{\bar{\Gamma}} \tilde{\Delta}_{T,I}. \end{aligned} \quad (\text{A-1.14})$$

Notice that both $\alpha_T/\bar{\Gamma}$ and $\alpha_T \bar{\Gamma}_2/\bar{\Gamma}$ are close to zero. As for the coefficient of \tilde{e} , it can be approximated by $\alpha_{NT} + \alpha_T$, which we assume close to 1: $\tilde{P} \approx -\tilde{e}$. We can therefore think of an increase in e_t as a real depreciation.

A-1.2 Model with Export Sunk Costs

The setup is inspired by Aw, Roberts and Xu (2011). We assume that in each period the firm first observes values of the fixed import cost f_m , the fixed and sunk costs of exporting, f_x and $f_{x,0}$ and the fixed and sunk cost of R&D investment, f_{RD} and $f_{RD,0}$. Subsequently, it makes its discrete decision to export in year t , $I_{ix,t}$ and afterwards the discrete decision to undertake R&D $I_{iRD,t}$ subject to a credit constraint. The state vector is now given by $(\omega_{i,t}, e_t, I_{iRD,t-1}, I_{ix,t-1})$.

The firm's value function is given by:

$$\begin{aligned} V_{i,t}(s_{i,t}) &= \mathbb{E}_x \left[\max_{I_{ix,t}} \{ \Pi_{i,t}^d(I_{ix,t} = 1) + \Pi_{i,t}^x - f_{x,0}(1 - I_{ix,t-1}) - f_x I_{ix,t-1} + V_{i,t}^x(s_{i,t}), \right. \\ &\quad \left. \Pi_{i,t}^d(I_{ix,t} = 0) + V_{i,t}^d(s_{i,t}) \} \right], \end{aligned}$$

where the expectations operator \mathbb{E}_x is with respect to the exporting fixed and sunk costs. In this equation, the value of investing in R&D is subsumed in $V_{i,t}^x$ and $V_{i,t}^d$, which are, respectively, the value

of an exporting and a non-exporting firm. The value of an exporting firm $V_{i,t}^x$ is given by:

$$V_{i,t}^x(s_{i,t}) = \mathbb{E}_{RD} \left[\max_{I_{iRD,t}} \{ \beta \mathbb{E}_t V_{i,t+1}(s_{i,t+1} | I_{ix,t} = I_{iRD,t} = 1) - f_{RD0}(1 - I_{iRD,t-1}) - f_{RD} I_{iRD,t-1}, \right. \\ \left. \beta \mathbb{E}_t V_{i,t+1}(s_{i,t+1} | I_{ix,t} = 1, I_{iRD,t} = 0) \right],$$

where the expectations operator \mathbb{E}_{RD} is with respect to the R&D fixed and sunk costs. The value is subject to the credit constraint:

$$I_{iRD,t} [f_{RD,0}(1 - I_{iRD,t-1}) + f_{RD} I_{iRD,t-1}] \leq \theta \epsilon_{i,t} (\Pi_{i,t}^d(I_{ix,t} = 1) + \Pi_{i,t}^x)$$

The value of a non-exporting firm $V_{i,t}^d$ is given by:

$$V_{i,t}^d(s_{i,t}) = \mathbb{E}_{RD} \left[\max_{I_{iRD,t}} \{ \beta \mathbb{E}_t V_{i,t+1}(s_{i,t+1} | I_{ix,t} = 0, I_{iRD,t} = 1) - f_{RD0}(1 - I_{iRD,t-1}) - f_{RD} I_{iRD,t-1}, \right. \\ \left. \beta \mathbb{E}_t V_{i,t+1}(s_{i,t+1} | I_{ix,t} = I_{iRD,t} = 0) \right]$$

and is subject to the credit constraint:

$$I_{iRD,t} [f_{RD,0}(1 - I_{iRD,t-1}) + f_{RD} I_{iRD,t-1}] \leq \theta \epsilon_{i,t} \Pi_{i,t}^d(I_{ix,t} = 0)$$

In comparison with Aw, Robert and Xu (2011), firms also face a static import decision. The optimal import choice of an exporter is given by:

$$\Pi_{i,t}^d(I_{ix,t} = 1) + \Pi_{i,t}^x = \max_{I_{im,t}} \{ \Pi_{i,t}^d(I_{ix,t} = I_{im,t} = 1) + \Pi_{i,t}^x(I_{im,t} = 1) - f_m, \\ \Pi_{i,t}^d(I_{ix,t} = 1, I_{im,t} = 0) + \Pi_{i,t}^x(I_{im,t} = 0) \}$$

The optimal import choice of a non-exporter is given by:

$$\Pi_{i,t}^d(I_{ix,t} = 0) = \max_{I_{im,t}} \{ \Pi_{i,t}^d(I_{ix,t} = 0, I_{im,t} = 1) - f_m, \Pi_{i,t}^d(I_{ix,t} = I_{im,t} = 0) \}$$

A-1.3 Production-function Estimation

In this Appendix we explain the details of the production-function estimation we use to construct the gross-output-based and the value-added based productivity measures. In the exposition we focus on the model consistent gross-output-based measure. For the case of value added, we subtract material expenditure from gross output and use it as the dependent variable. Most steps are analogous to the case of gross output.

A-1.3.1 Firm-level Productivity Measures

Rewriting the demand function (7), $d_{i,t} = (p_{i,t}/P_{T,t})^{-\sigma} D_{T,t}$ as $d_i = \left(\frac{p_i}{P_T}\right)^{-\sigma} D_T$, we get the inverse demand function $p_i = d_i^{-\frac{1}{\sigma}} D_T^{\frac{1}{\sigma}} P_T$. Using optimal pricing $p_i = \frac{\sigma}{\sigma-1} MC_i$, it is easy to show that the fraction of domestic sales is given by $\nu_i(e) \equiv \frac{d_i}{d_i + d_i^*}$. Since $d_i = \nu_i Y_i$, we have that $d_i^{\frac{\sigma-1}{\sigma}} = \nu_i^{\frac{\sigma-1}{\sigma}} Y_i^{\frac{\sigma-1}{\sigma}}$. For the case of an exporting firm, we can then write total revenue $R_i = p_{it}d_{it} + p_{it}^*d_{it}^*$ as $R_i = Y_i^{\frac{\sigma-1}{\sigma}} \left[\nu^{\frac{\sigma-1}{\sigma}} D_T^{\frac{1}{\sigma}} P_T + (1-\nu)^{\frac{\sigma-1}{\sigma}} (D_T^*)^{\frac{1}{\sigma}} (P_T^*) \right] \equiv Y_i^{\frac{\sigma-1}{\sigma}} G_i(D_T, D_T^*, e)$. Total revenue can be expressed as:

$$R_{i,t} = p_{i,t}d_{i,t} + I_{iX,t}p_{i,t}^*d_{i,t}^* = (Y_{i,t})^{\frac{\sigma-1}{\sigma}} G_{i,t}(D_{T,t}, D_{T,t}^*, e_t),$$

where $Y_{i,t}$ is physical output and $G_{i,t}$ captures the state of aggregate demand, which depends on the RER e_t . $G_{i,t}$ varies by firm only through $I_{iX,t}$, which is an indicator that equals one if the firm exports and thus allows the firm to also attract foreign demand. Taking logs and plugging in production function (6),

$$r_{i,t} = \frac{\sigma-1}{\sigma} [\beta_0 + \beta_k k_{i,t} + \beta_l l_{i,t} + \beta_m \tilde{m}_{i,t} - \beta_m \log(P_{X,t}) + \beta_m \tilde{a}_{it}(e_t) + \omega_{it} + \epsilon_{i,t}] + g_{i,t}(D_{T,t}, D_{T,t}^*, e_t).$$

A-1.3.2 First Stage

Materials are chosen conditional on observing ω_{it} , the capital stock k_{it} , the export and import status $I_{ix,t}$, $I_{im,t}$, the RER e_t and aggregate demand $D_{T,t}$, $D_{T,t}^*$. Since material expenditure $\tilde{m}_{i,t} = \tilde{m}_{i,t}(\omega_{i,t}, k_{i,t}, D_{T,t}, D_{T,t}^*, e_t)$ is strictly increasing in $\omega_{i,t}$,⁶⁹ we can express $\omega_{i,t}$ as a function of capital $k_{i,t}$, material expenditure $\tilde{m}_{i,t}$ and aggregate demand $(D_{T,t}, D_{T,t}^*, e_t)$.

$$\begin{aligned} r_{i,t} &= \tilde{\beta}_l l_{i,t} + \tilde{\beta}_0 + \tilde{\beta}_k k_{i,t} + \tilde{\beta}_m \tilde{m}_{i,t} + \tilde{\beta}_m \tilde{a}_{i,t}(e_t) - \tilde{\beta}_m \log(P_{X,t}) + \tilde{\omega}_{i,t}(k_{i,t}, \tilde{m}_{i,t}, D_{T,t}, D_{T,t}^*, e_t) + g_{i,t}(D_{T,t}, D_{T,t}^*, e_t) + \epsilon_{i,t} = \\ &= \tilde{\beta}_l l_{i,t} + \Phi(k_{i,t}, \tilde{m}_{i,t}, D_{T,t}, D_{T,t}^*, e_t) + \epsilon_{i,t}, \end{aligned}$$

where $\tilde{\beta} = \frac{\sigma-1}{\sigma}\beta$ and $\tilde{\omega} = \frac{\sigma-1}{\sigma}\omega$. $\Phi(k_{i,t}, \tilde{m}_{i,t}, D_{T,t}, D_{T,t}^*, e_t)$ is a function that captures a combination of $\tilde{\omega}_{i,t}$, the import channel $\tilde{a}_{i,t}$ and the demand channel $g_{i,t}$. It is approximated using a flexible polynomial:

$$\begin{aligned} \Phi(k_{i,t}, \tilde{m}_{i,t}, D_{T,t}, D_{T,t}^*, e_t) &= \lambda_0 + \lambda_1 k_{i,t} + \lambda_2 \tilde{m}_{i,t} + \lambda_3 k_{i,t} \tilde{m}_{i,t} + \lambda_4 k_{i,t}^2 + \dots + \lambda_9 \tilde{m}_{i,t}^3 + \\ &+ \sum_{j=1}^J \lambda_j^{EXP} \log(e_{s,t}^{EXP}) + \sum_{j=1}^J \lambda_j^{IMP} \log(e_{s,t}^{IMP}) + D_{c,t} + D_s \end{aligned}$$

Here, $D_{c,t}$ are country-time dummies that absorb aggregate demand shocks, the price of domestic materials, $P_{X,t}$, and also correct for the fact that output and inputs are measured in nominal terms, while

⁶⁹The dependence on the export and import status is indicated by making the function $m_{i,t}$ firm specific. Strictly speaking, the production function estimation procedure requires material choices to be made after the other input choices are made. In our theoretical model we assume for convenience that all inputs are chosen simultaneously so that firms operate on their long-run marginal cost curve. We have also experimented with material choices to be made after the other inputs are chosen, leading to very similar results.

D_s are sector dummies. The terms $\sum_{j=1}^J \lambda_j^{EXP} \log(e_{s,t}^{EXP})$ and $\sum_{j=1}^J \lambda_j^{IMP} \log(e_{s,t}^{IMP})$ are interactions of sector-specific export and import-weighted RERs with dummies for firm-size bins λ_j^{EXP} , λ_j^{IMP} . They control for the impact of firms' export and import decisions on their demand and productivity. By interacting RERs with dummies for firm size, we allow the impact of RER changes to affect firms differentially depending on their size.⁷⁰ Larger firms are much more likely to export and/or import and should thus be more affected by RER changes. We prefer these firm-size-bin interactions with the RERs to interactions with export and import status, since the firm-level trade status is not available for around 60% of the observations.⁷¹ Since $\epsilon_{i,t}$ is uncorrelated with the covariates given our timing assumptions, OLS estimation of (A-1.15) allows us to recover a consistent estimate for the labor coefficient $\hat{\beta}_l$ and predicted values for $\hat{\Phi}(k_{i,t}, \tilde{m}_{i,t}, D_{T,t}, D_{T,t}^*, e_t)$ from the first stage.

A-1.3.3 Second Stage

In the second stage we obtain consistent estimates for the capital and material coefficients $\tilde{\beta}_k$ and $\tilde{\beta}_m$, the return to R&D $\tilde{\alpha}_2$ and for the stochastic process of TFP. To obtain a better fit, we allow the Markov-process to be a second-order polynomial of lagged TFP, with parameters α_0 , α_1 and α_3 . To do this, we plug our estimates $\hat{\beta}_l$ and $\hat{\Phi}(k_{i,t}, \tilde{m}_{i,t}, D_{T,t}, D_{T,t}^*, e_t)$ into the equation resulting from combining the stochastic process for TFP (14) with (A-1.15).

$$\begin{aligned} r_{i,t} - \hat{\beta}_l l_{i,t} &= \tilde{\beta}_0 + \tilde{\beta}_k k_{i,t} + \tilde{\beta}_m \tilde{m}_{i,t} + \tilde{\alpha}_0 + \\ &+ \alpha_1 \left[\hat{\Phi}(k_{i,t-1}, \tilde{m}_{i,t-1}, D_{T,t}, D_{T,t}^*, e_{t-1}) - \tilde{\beta}_k k_{i,t-1} - \tilde{\beta}_m \tilde{m}_{i,t-1} \right] \\ &+ \alpha_3 \left[\hat{\Phi}(k_{i,t-1}, \tilde{m}_{i,t-1}, D_{T,t}, D_{T,t}^*, e_{t-1}) - \tilde{\beta}_k k_{i,t-1} - \tilde{\beta}_m \tilde{m}_{i,t-1} \right]^2 + \tilde{\alpha}_2 I_{iRD,t-1} + \epsilon_{i,t} + \tilde{u}_{i,t}. \end{aligned}$$

Since $\mathbb{E}(\tilde{m}_{i,t} \tilde{u}_{i,t}) \neq 0$ we need to instrument for $\tilde{m}_{i,t}$ using the 2-period lag of materials. The moment conditions are given by $\mathbb{E}(Z'_{i,t}(\epsilon_{i,t} + \tilde{u}_{i,t})) = 0$, where $Z_{i,t} = (\tilde{m}_{i,t-1}, \tilde{m}_{i,t-2}, k_{i,t-1}, I_{iRD,t-1})$. We use a 2-step GMM estimator to obtain consistent estimates of $\tilde{\beta}_k$, $\tilde{\beta}_m$, $\tilde{\alpha}_0$, α_1 , α_3 and $\tilde{\alpha}_2$.⁷² We obtain standard errors using a bootstrap. In some specifications we impose constant returns to scale in the second stage of the estimation procedure (i.e., given $\sigma = 4$, the input coefficients need to sum to 3/4). Results are reported in Table A-7. TFPR is then constructed using equation (25). In the baseline results (all Tables except Table A-3) we do not impose constant returns to scale (we use estimates from columns (1) and (3) of Table A-7) and we do not correct for the markup term. We report results imposing constant returns in Table A-3, columns (3) and (6). We report results imposing constant returns and multiplying $\tilde{\beta}$ with $(\sigma - 1)/\sigma$ in Table A-3, columns (4) and (7).

⁷⁰In the estimation we use 4 firm-size bins: ≤ 20 employees; 20 – 50 employees 50 – 200 employees ≥ 200 employees.

⁷¹We obtain similar results for the first-stage coefficients when instead interacting RERs with export and import status.

⁷²For the case of the value added production function materials do not appear on the right-hand side, so the equation can be consistently estimated by non-linear least squares.

A-1.4 Dataset Construction

Our main data source for firm-level information is Orbis (Bureau Van Dijk). We combine data from two CDs (2007 and 2014) and the web version of Orbis. Orbis provides firm-level balance sheet data of listed and unlisted firms.

We drop firm-year observations without firm identifiers, company names, information on revenue or sales, total assets, employees and observations with missing accounting units. We replace as missing any negative reported values for sales, revenue, number of employees, total assets, current liabilities, total liabilities, long-term debt, tangible fixed assets, intangible fixed assets, current assets, material costs, R&D expenditure. We convert variables into common units (thousands of current local currency). We compute the capital stock as the sum of tangible fixed assets and intangible fixed assets. We compute value added as revenue minus material costs. We keep firms with a primary activity in the manufacturing sector (US SIC 1997 codes 200-399). See Alfaro and Chen (2018) for further description of the data.

Dun & Bradstreet's WorldBase is a database covering millions of public and private companies in more than 200 countries and territories. The unit of observation in Worldbase is the establishment/plant. Among other variables, Worldbase reports for each plant the full name of the company, location information (country, state, city, and street address) basic operational information (sales and employment), and most importantly, information on the plant's trade status (exporting/not exporting/importing/not importing). See Alfaro et al (2016) for a detailed description.

For those manufacturing firms in Orbis that report revenue, number of employees, capital stock and material costs, we merge by names with the Worldbase datasets for the years 2000, 2005, 2007 and 2009. When common id were not provided by the datasets, we use the Jaro-Winkler string distance algorithm to match the datasets by company names. We condition on the firms being located in the same country and then match by names and require a match score of at least 0.93, which turns out to provide a very good match in manual checks. For our main analysis we disregard the year information of the trade status to maximize sample coverage. We thus assign a fixed trade status to each firm, giving priority to earlier years.

We drop outliers, by removing the top and bottom one percent of observations in terms of (log) capital stock, materials, value added, sales, employment in the TFP estimation. After the production function coefficients have been estimated on this restricted sample, we expand sample size and compute TFP also for observations with missing material costs, by proxying for the material cost as (median material share in revenue) \times revenue. Finally, we drop the top and bottom one percent of observations in terms of TFP growth before running the reduced-form regressions reported in the paper.

Appendix Table A-1 (Panel B) reports descriptive statistics of firm-level variables (for comparability across countries in thousands of 2004 US-Dollars).

A-1.5 Numerical Solution Algorithm

This Appendix describes the computational details of the algorithm used in the estimation. Denote Θ as the vector of parameters to be estimated. The estimation follows the following routine:

- (1) For a given value of Θ , solve the dynamic problem of firms, captured by the Bellman equation described in Section 3.7. This step yields the value functions for the firms.
- (2) Simulate the decisions (for a panel of 8000 firms for 80 periods) for a set of firms. Calculate the desired moments from the simulated data.
- (3) Update Θ to minimize the (weighted) distance between the simulated statistics and the data statistics.

Step 1. Solving the Bellman equation.

First we use Tauchen's method to discretize the state space for the continuous state variables that include productivity ω_{it} and the RER e_t . We choose 50 grids for each state variable. The transition matrix of productivity conditional on doing or not doing R&D is calculated accordingly.

We first derive the per-period revenue, profit, static export and import choices at each state in the grid as described in Section 3. The discrete R&D choice is the only dynamic decision. Each firm maximizes the sum of its current and discounted future profits. We iterate on the value function until numerical convergence. We do not get a deterministic R&D decision since only the mean R&D costs are known to the firms when solving the Bellman equation. However, we can calculate the value of doing R&D at any given state. In step 2, after firms observe their cost draws, they can then make deterministic R&D investment decisions.

Step 2 Simulating firms' decisions.

We then simulate the decisions for a panel of 8000 firms and 80 periods: 400 firms, each for 20 countries and 80 periods. Each country gets a unique series of exchange rates shocks simulated following the same AR(1) process and mapped to the grids of the state space. The shocks in the initial period are drawn from the steady-state distribution implied by the AR(1) process. All the cost shocks are drawn from their respective distributions.

With respect to firms' idiosyncratic productivity shocks, we assume that no firm does R&D in period 1, and draw the initial-period productivity shocks from the steady-state distribution without R&D. In each subsequent period, given the beginning-of-period productivity and other shocks, each firm then makes the static export and import decisions, and also the dynamic R&D decisions by comparing their associated fixed or sunk cost draws with the value of doing R&D computed in step 1 (taking into account the credit constraint). After knowing each firm's R&D decision, we simulate its end-of-period productivity shock following the respective AR(1) process. The moments of interest are

then calculated from the simulated data on exporting, importing, sales, cash flow, etc. The first 10 periods are considered as burn-in periods and not used to calculate the data moments.

Step 3. Indirect Inference.

Steps 1 and 2 together generate the moments of interest for any given Θ . In step 3, Θ is updated to minimize a weighted distance between the data statistics and the simulated statistics (see below). After each optimization step, we return to steps 1 and 2 using the updated guess of Θ . The minimization is performed using the genetic algorithm.

Let ν be the $p \times 1$ vector of data statistics and let $\nu(\Theta)$ denote the synthetic counterpart of ν with the statistics computed from artificial data generated by the structural model. Then the indirect-inference estimator of the $q \times 1$ vector Θ , $\tilde{\Theta}$ is the value that solves

$$\min_{\beta} (\nu - \nu(\Theta))' V (\nu - \nu(\Theta)), \tag{A-1.15}$$

where V is the $p \times p$ optimal weighting matrix (the inverse of the variance-covariance matrix of the data statistics ν). Since the data statistics are computed from different datasets, we set the off-diagonal elements of the variance-covariance matrix to zero. (See Cosar et al., 2016 and Dix-Carneiro, 2014 for a similar approach.) One can show that under certain regularity conditions, the estimates are consistent and asymptotically normal. (See Gouriéroux et al., 1993 for details.)

A-1.6 Additional Figures and Tables

Figure A-1: Aggregate effect of an unexpected real depreciation (25%, 12.5%) and appreciation (25%) for emerging Asia.

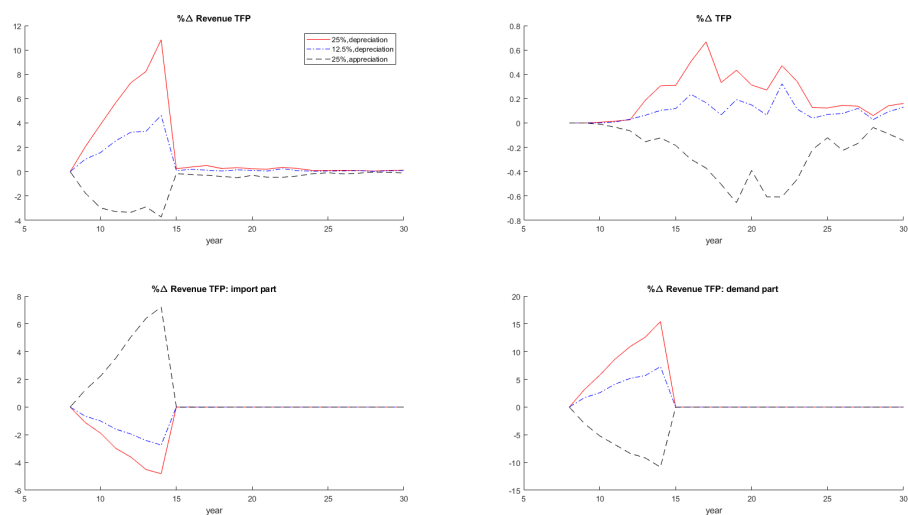


Figure A-2: Aggregate effect of an unexpected real depreciation (25%, 12.5%) and appreciation (25%) for other emerging economies.

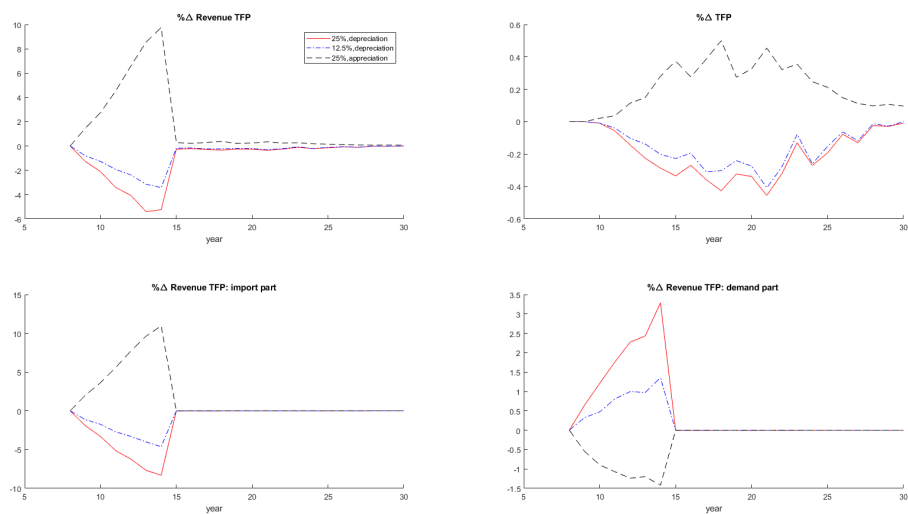


Figure A-3: Aggregate effect of an unexpected real depreciation (25%, 12.5%) and appreciation (25%) for industrialized economies.

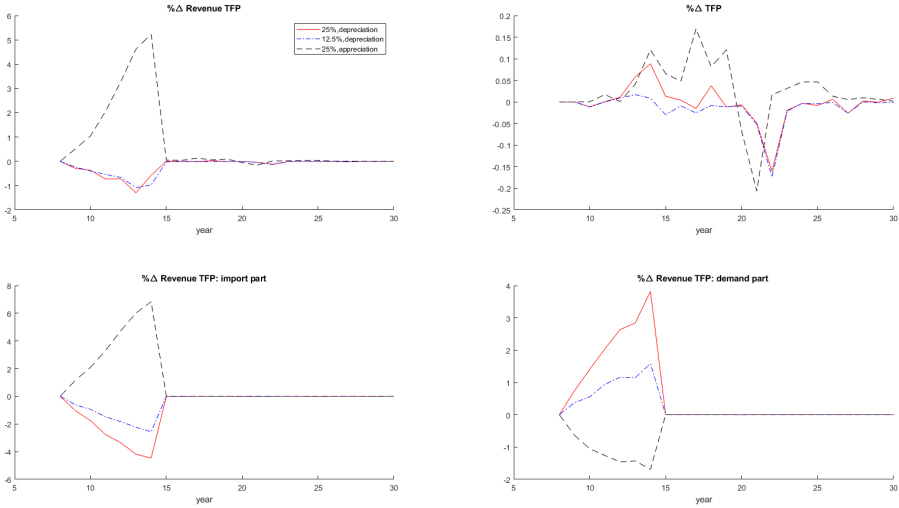


Table A-1: Panel A - Sample Frame

Country	Freq.	Percent	Cum.	Country	Freq.	Percent	Cum.
ARG*	98	0.01	0.01	KEN*	13	0	88.28
AUS+	1,004	0.08	0.08	KOR-	101,267	7.63	95.91
AUT+	5,895	0.44	0.53	KWT*	33	0	95.91
BEL+	25,908	1.95	2.48	LBN*	1	0	95.91
BGD-	36	0	2.48	LKA-	126	0.01	95.92
BGR*	24,114	1.82	4.3	LTU*	64	0	95.92
BHR*	6	0	4.3	LUX+	38	0	95.93
BIH*	15,580	1.17	5.47	LVA*	64	0	95.93
BOL*	32	0	5.48	MAR*	15	0	95.93
BRA*	2,030	0.15	5.63	MEX*	152	0.01	95.94
BRB*	1	0	5.63	MKD*	73	0.01	95.95
BWA*	1	0	5.63	MLT*	3	0	95.95
CAN+	30	0	5.63	MUS+	8	0	95.95
CHE+	538	0.04	5.67	MWI*	1	0	95.95
CHL*	5	0	5.67	MYS+	3,210	0.24	96.19
CHN-	213,230	16.07	21.74	NAM*	4	0	96.19
COL*	125	0.01	21.75	NGA*	168	0.01	96.21
CPV*	4	0	21.75	NLD+	4,111	0.31	96.52
CRI*	8	0	21.75	NOR+	11,227	0.85	97.36
CYP*	204	0.02	21.76	NZL+	41	0	97.36
CZE*	5,216	0.39	22.16	OMN*	158	0.01	97.38
DEU+	100,801	7.59	29.75	PAK*	134	0.01	97.39
DMA*	4	0	29.75	PAN*	14	0	97.39
DNK+	915	0.07	29.82	PER*	151	0.01	97.4
DOM*	6	0	29.82	PHL-	216	0.02	97.41
ECU*	18	0	29.82	POL*	11,174	0.84	98.26
EGY*	70	0.01	29.83	PRT+	137	0.01	98.27
ESP+	291,219	21.94	51.77	PRY*	8	0	98.27
EST*	16,559	1.25	53.02	QAT*	10	0	98.27
FIN+	30,996	2.34	55.35	ROU*	27	0	98.27
FJI*	3	0	55.35	SAU*	33	0	98.27
FRA+	168,756	12.71	68.07	SGP-	1,462	0.11	98.38
GBR+	37,491	2.82	70.89	SLV*	4	0	98.38
GHA*	4	0	70.89	SRB*	3	0	98.38
GRC+	24,076	1.81	72.7	SVK*	9	0	98.38
GRD*	1	0	72.71	SVN*	21	0	98.39
GTM*	7	0	72.71	SWE+	9,262	0.7	99.08
HKG-	351	0.03	72.73	THA-	3,677	0.28	99.36
HRV*	35,905	2.71	75.44	TTO*	1	0	99.36
HUN*	28	0	75.44	TUN*	3	0	99.36
IDN-	1,055	0.08	75.52	TUR*	81	0.01	99.37
IND-	303	0.02	75.54	TWN-	7,369	0.56	99.92
IRL+	2,120	0.16	75.7	TZA*	4	0	99.92
IRN*	126	0.01	75.71	UGA*	1	0	99.92
IRQ*	15	0	75.71	UKR*	307	0.02	99.95
ISL+	25	0	75.71	URY*	5	0	99.95
ISR*	696	0.05	75.77	VEN*	2	0	99.95
ITA+	107,685	8.11	83.88	VNM-	528	0.04	99.99
JAM*	4	0	83.88	ZAF*	174	0.01	100
JOR*	229	0.02	83.9	ZMB*	8	0	100
JPN+	58,096	4.38	88.27	ZWE*	3	0	100
KAZ*	25	0	88.28	Total	1,333,986	100	

Notes: + indicates industrialized economies, - indicates emerging Asia, * indicates other emerging economies. The number of observations for each country correspond to those of Table 1, columns (1) and (2). These numbers correspond to those observations included in the estimation that are not absorbed by the fixed effects.

Table A-1: Panel B - Firm-level descriptive statistics. Mean values of firm-level variables by trade status (in thousands of constant 2004 Dollars)

	sales	va	capital	mat.	empl.	tfp	R&D exp.	R&D pr.	exp. pr.	imp. pr.	firms
full sample	18.015	5.871	5.960	7.082	110.685	0.406	6.767	0.341			494,652
with trade data	24.688	8.675	7.889	8.954	123.687	0.540	10.837	0.423	0.290	0.221	177,358
domestic firms	15.439	5.924	4.691	5.842	81.437	0.428	5.699	0.327	0.000	0.000	127,943
exporters	46.459	14.984	15.407	15.948	223.573	0.806	18.064	0.551	1.000	0.644	43,766
importers	47.162	13.534	15.452	15.337	223.240	0.803	18.898	0.543	0.847	1.000	32,935

Table A-1: Panel C - Firm-level descriptive statistics. Growth rates of firm-level outcomes.

	Mean	Median	S.D.	Pct. 10	Pct. 90	Observations
$\Delta \log \text{TFPR}_{VA,it}$	0.062	0.032	0.401	-0.323	0.459	1,333,986
$\Delta \log \text{TFPR}_{GO,it}$	0.014	0.009	0.149	-0.127	0.155	1,333,986
$\Delta \log \text{sales}_{it}$	0.083	0.045	0.421	-0.280	0.458	1,275,606
$\Delta \log \text{c. f.}_{it}$	0.032	0.033	0.810	-0.770	0.835	772,970
$\Delta \text{R\&D prob.}_{it}$	0.018	0	0.245	0	0	148,367

Table A-1: Panel D - Percentage changes in aggregate/trade-weighted real exchange rates (computed from PWT 8.0).

	Mean	Median	S.D.	Pct.10	Pct. 90	Observations
$\Delta \log(e_{ct})$ (sample weights)	-0.022	-0.026	0.077	-0.106	0.069	1,333,986
$\Delta \log(e_{sct}^{exp})$ (sample weights)	-0.009	-0.001	0.037	-0.054	0.036	1,285,833
$\Delta \log(e_{sct}^{imp})$ (sample weights)	-0.010	-0.001	0.038	-0.061	0.028	1,286,033
$\Delta \log(e_{ct})$ (unweighted)	-0.034	-0.040	0.119	-0.160	0.086	1,832
$\Delta \log(e_{ct})$ (5-year differences)	-0.189	-0.211	0.248	-0.478	-0.196	333

Table A-2: The aggregate RER and firm-level outcomes: excluding crisis years

	(1)	(2)	(3)	(4)	(5)
	$\Delta \log \text{TFPR}_{VA,it}$	$\Delta \log \text{TFPR}_{GO,it}$	$\Delta \log \text{sales}_{it}$	$\Delta \log \text{c. f.}_{it}$	$\Delta \text{R\&D prob.}_{it}$
$\Delta \log e_{ct} \times$	0.209***	0.124***	0.410**	0.660***	0.164***
emerging Asia _c	(0.062)	(0.017)	(0.164)	(0.246)	(0.058)
$\Delta \log e_{ct} \times$	-0.217*	-0.0438	-0.0828	0.173	0.00822
other emerging _c	(0.130)	(0.048)	(0.207)	(0.336)	(0.007)
$\Delta \log e_{ct} \times$	0.094*	0.0105	0.162	-0.258	0.0104
industrialized _c	(0.055)	(0.022)	(0.105)	(0.326)	(0.023)
Observations	871,672	871,672	816,686	528,152	86,859
R-squared	0.053	0.031	0.076	0.022	0.012
Country-sector FE	YES	YES	YES	YES	YES
Time FE	YES	YES	YES	YES	YES
Business cycle controls	YES	YES	YES	YES	YES
Cluster	Country	Country	Country	Country	Country

Notes: The dependent variable in columns (1)-(5) is the annual log difference in the following firm-level outcomes computed from Orbis for manufacturing firms for the years 2001-2008: revenue-based TFP computed from value-added (column 1), revenue-based TFP computed from gross output (column 2), nominal sales (column 3), cash flow (column 4), an indicator for R&D status (column 5). The construction of TFP is explained in section 4 of the paper. The main explanatory variable of interest is the annual log difference in the real exchange rate from the PWT 8.0 interacted with dummies for: emerging Asia; other emerging economy; industrialized economy. The regressions also control for the real growth rate of GDP in PPP (from PWT8.0) and the inflation rate (from IMF).

Table A-3: The aggregate RER and productivity growth – alternative productivity measures

	(1)	(2)	(3)	(4)	(5)	(6)	(7)
	$\Delta \log \text{lab. prod.}_{it}$	$\Delta \log \text{TFPR}_{VA,it}$	$\Delta \log \text{TFPR}_{VA,CRS,it}$	$\Delta \log \text{TFPR}_{VA,CRS,markup,it}$	$\Delta \log \text{TFPR}_{GO,it}$	$\Delta \text{TFPR}_{GO,CRS,it}$	$\Delta \text{TFPR}_{GO,CRS,markup,it}$
$\Delta \log e_{ct} \times$	0.245*	0.239***	0.242***	0.835**	0.120***	0.106	0.152**
emerging Asia _c	(0.144)	(0.090)	(0.087)	(0.366)	(0.020)	(0.113)	(0.060)
$\Delta \log e_{ct} \times$	-0.483**	-0.546***	-0.542***	0.277	-0.105**	-0.376***	-0.234***
other emerging _e	(0.190)	(0.185)	(0.185)	(0.390)	(0.043)	(0.126)	(0.083)
$\Delta \log e_{ct} \times$	-0.13	0.0196	0.021	0.304	-0.031	-0.118	-0.0773
industrialized _c	(0.139)	(0.103)	(0.102)	(0.245)	(0.031)	(0.109)	(0.063)
Observations	1,275,606	1,333,986	1,333,986	1,333,986	1,333,986	1,333,986	1,333,986
R-squared	0.052	0.057	0.056	0.012	0.038	0.066	0.058
Country-sector FE	YES	YES	YES	YES	YES	YES	YES
Time FE	YES	YES	YES	YES	YES	YES	YES
Business cycle controls	YES	YES	YES	YES	YES	YES	YES
Cluster	Country	Country	Country	Country	Country	Country	Country

Notes: The dependent variable in columns (1)-(7) is the annual log difference in the following firm-level productivity measures computed from Orbis for manufacturing firms for the years 2001-2010: labor productivity (sales/employment) (column 1), revenue-based TFP computed from value-added (column 2), revenue-based TFP computed from value added, imposing constant returns to scale (column 3), revenue-based TFP computed from value added, imposing constant returns to scale and correcting for markups (column 4), revenue-based TFP computed from gross output (column 5), revenue-based TFP computed from gross output, imposing constant returns to scales (column 6), revenue-based TFP computed from gross output, imposing constant returns to scale and correcting for markups (column 7). The construction of TFP is explained in section 4 of the paper and in Appendix A-1.2. The main explanatory variable of interest is the annual log difference in the real exchange rate from the PWT 8.0 interacted with dummies for: emerging Asia; other emerging economy; industrialized economy. The regressions also control for the real growth rate of GDP in PPP (from PWT 8.0) and the inflation rate (from IMF).

Table A-4: The aggregate RER and firm-level outcomes: IV estimates

	(1)	(2)	(3)	(4)	(5)
	$\Delta \log \text{TFPR}_{VA,it}$	$\Delta \log \text{TFPR}_{GO,it}$	$\Delta \log \text{sales}_{it}$	$\Delta \log \text{c. f.}_{it}$	$\Delta \text{R\&D prob.}_{it}$
$\Delta \log e_{ct} \times$	0.286***	0.140***	0.267	0.895***	0.668***
emerging Asia _c	(0.078)	(0.023)	(0.190)	(0.060)	(0.245)
$\Delta \log e_{ct} \times$	-0.922***	-0.337**	-2.114*	-0.906	-4.076
other emerging	(0.354)	(0.137)	(1.241)	(0.560)	(2.836)
$\Delta \log e_{ct} \times$	-0.009	-0.054	-0.353	-0.105	-5.169
industrialized _c	(0.258)	(0.099)	(0.686)	(0.520)	(5.424)
Observations	1,310,509	1,310,509	1,252,483	758,623	142,093
R-squared	0.011	0.011	0.028	0.014	-0.006
Country-sector FE	YES	YES	YES	YES	YES
Time FE	YES	YES	YES	YES	YES
Business cycle controls	YES	YES	YES	YES	YES
Cluster	Country	Country	Country	Country	Country
Kleibergen-Paap F-Statistic	9.146	9.146	9.919	4.759	8.304
Cragg-Donald P-value	(0.011)	(0.011)	(0.041)	(0.312)	(0.081)
Hansen	3.333	1.88	3.951	2.625	2.642
P-value	(0.343)	(0.597)	(0.267)	(0.453)	(0.452)

Notes: The dependent variable in columns (1)-(5) is the annual log difference in the following firm-level outcomes computed from Orbis for manufacturing firms for the years 2001-2010: revenue-based TFP computed from value-added (column 1), revenue-based TFP computed from gross output (column 2), nominal sales (column 3), cash flow (column 4), an indicator for R&D status (column 5). The construction of TFP is explained in section 4 of the paper. The main explanatory variable of interest is the annual log difference in the real exchange rate from the PWT 8.0 interacted with dummies for: emerging Asia; other emerging economy; industrialized economy. The regressions also control for the real growth rate of GDP in PPP (from PWT8.0) and the inflation rate (from IMF). The set of excluded instruments consists of: regional dummies interacted with (i) trade-weighted world commodity prices and (ii) world capital flows interacted with the Chinn-Ito index for financial account openness. Standard errors are clustered at the country level.

Table A-5: Export-and import-weighted RERs and firm-level outcomes

	(1)	(2)	(3)	(4)	(5)
	$\Delta \log \text{TFPR}_{VA,it}$	$\Delta \log \text{TFPR}_{GO,it}$	$\Delta \log \text{sales}_{it}$	$\Delta \log \text{c. f.}_{it}$	$\Delta \text{R\&D prob.}_{it}$
$\Delta \log e_{sct}^{exp} \times$ emerging Asia _c	0.627*** (0.188)	0.212*** (0.066)	0.953*** (0.229)	1.441*** (0.514)	0.218*** (0.048)
$\Delta \log e_{sct}^{exp} \times$ other emerging _c	0.0154 (0.239)	0.100 (0.078)	0.222 (0.395)	0.171 (0.487)	0.342 (0.369)
$\Delta \log e_{sct}^{exp} \times$ industrialized _c	0.827 (0.587)	0.069 (0.081)	0.391 (0.385)	0.751 (0.679)	-0.737*** (0.189)
$\Delta \log e_{sct}^{imp} \times$ emerging Asia _c	0.0507 (0.181)	0.0352 (0.0624)	-0.0697 (0.207)	-0.692* (0.400)	0.053 (0.048)
$\Delta \log e_{sct}^{imp} \times$ other emerging _c	-0.397 (0.324)	-0.145 (0.102)	-0.330 (0.596)	-0.925 (0.680)	0.253 (0.345)
$\Delta \log e_{sct}^{imp} \times$ industrialized _c	-0.193 (0.354)	6.32E-05 (0.0674)	-0.289 (0.326)	-0.557 (0.616)	0.510*** (0.169)
Observations	1,285,693	1,285,693	1,228,253	746,330	140,048
R-squared	0.054	0.037	0.104	0.025	0.03
Country-time FE	YES	YES	YES	YES	YES
Country-sector FE	YES	YES	YES	YES	YES
Cluster	Country-sector	Country-sector	Country-sector	Country-sector	Country-sector

Notes: The dependent variable in columns (1)-(5) is the annual log difference in the following firm-level outcomes computed from Orbis for manufacturing firms for the years 2001-2010: revenue-based TFP computed from value-added (column 1), revenue-based TFP computed from gross output (column 2), nominal sales (column 3), cash flow (column 4), an indicator for R&D status (column 5). The construction of TFP is explained in section 4 of the paper. The main explanatory variables of interest are the annual log differences in the export- and import-weighted sector-level real exchange rates computed from PWT 8.0 and bilateral export and import shares at the 3-digit USSIC level (from UN-Comtrade data), interacted with dummies for: industrialized economy; emerging Asia; other emerging economy. Standard errors are clustered at the country-sector level.

Table A-6: Import and export propensity/intensity of manufacturing plants (Worldbank's 2016 Enterprise Survey)

	Emerging Asia	other emerging
Export prob.	0.20	0.26
Import prob.	0.19	0.33
Avg. export intensity (exporters)	0.58	0.25
Avg. import intensity (importers)	0.13	0.14

Notes: Emerging Asia is defined as emerging East Asia and South Asia; other emerging economies are defined as Eastern Europe and Latin America.

Table A-7: Production function: coefficient estimates

	(1)	(2)	(3)	(4)
	gross output	value added	gross output constant returns	value added constant returns
labor β_l	0.336*** (0.002)	0.533*** (0.002)	0.336*** (0.002)	0.533*** (0.002)
capital $\tilde{\beta}_k$	0.093*** (0.018)	0.210*** (0.010)	0.051*** (0.008)	0.217*** (0.002)
materials $\tilde{\beta}_m$	0.682*** (0.022)		0.363*** (0.008)	
R&D return $\tilde{\alpha}_2$	0.079*** (0.013)	0.033** (0.016)	0.060*** (0.009)	0.033** (0.016)
$\log(e_{sct}^{EXP}) \times \lambda_1^{EXP}$	0.001 (0.021)	-0.149*** (0.034)	0.001 (0.021)	-0.149*** (0.034)
$\log(e_{sct}^{EXP}) \times \lambda_2^{EXP}$	0.426*** (0.025)	0.729*** (0.039)	0.426*** (0.025)	0.729*** (0.039)
$\log(e_{sct}^{EXP}) \times \lambda_3^{EXP}$	0.345*** (0.027)	0.755*** (0.046)	0.345*** (0.027)	0.755*** (0.046)
$\log(e_{sct}^{EXP}) \times \lambda_4^{EXP}$	0.178*** (0.068)	0.445*** (0.117)	0.178*** (0.068)	0.445*** (0.117)
$\log(e_{sct}^{IMP}) \times \lambda_1^{IMP}$	-0.073*** (0.020)	0.110*** (0.032)	-0.073*** (0.020)	0.110*** (0.032)
$\log(e_{sct}^{IMP}) \times \lambda_2^{IMP}$	-0.561*** (0.025)	-0.838*** (0.034)	-0.561*** (0.025)	-0.838*** (0.034)
$\log(e_{sct}^{IMP}) \times \lambda_3^{IMP}$	-0.700*** (0.027)	-1.142*** (0.045)	-0.700*** (0.027)	-1.142*** (0.045)
$\log(e_{sct}^{IMP}) \times \lambda_4^{IMP}$	-0.827*** (0.066)	-1.240*** (0.117)	-0.827*** (0.066)	-1.240*** (0.117)
Observations	33,252	49,183	33,252	49,183
Country-time FE	YES	YES	YES	YES
Sector FE	YES	YES	YES	YES

Notes: Details of the production-function estimation are explained in Appendix A-1.3. The terms $\lambda_j^{EXP} \times \log(e_{s,t}^{EXP})$ and $\lambda_j^{IMP} \times \log(e_{s,t}^{IMP})$ are interactions of sector-specific export and import-weighted RERs with dummies for firm-size bins for ≤ 20 employees; 20 – 50 employees 50 – 200 employees ≥ 200 employees. Standard errors clustered at the firm level reported in parentheses.

Table A-8: Estimation of log RER, AR (1) process

	(1)	(2)
intercept	-0.000 (0.009)	-0.032 (0.020)
$\log e_{c,t-1}$	0.930*** (0.015)	0.935*** (0.015)
Observations	1,832	1,832
R-squared	0.931	0.947
s.d. residuals	0.105	0.0924
Cluster	Country	Country
Time dummies	NO	YES

Notes: AR (1) process of log RER. The explanatory variable of interest is the 1-year lag of the log RER from the PWT 8.0. Standard errors are clustered at the country level.

Table A-9: The aggregate RER and firm-level outcomes: separating depreciations and appreciations

	(1)	(2)	(3)	(4)
	$\Delta \log \text{TFPR}_{VA,it}$	$\Delta \log \text{TFPR}_{GO,it}$	$\Delta \log \text{sales}_{it}$	$\Delta \log \text{c. f.}_{it}$
$ \Delta \log e_{ct} \times I_{ct}^+ \times$ emerging Asia _c	0.740*** (0.152)	0.243*** (0.077)	1.209*** (0.285)	1.580*** (0.238)
$ \Delta \log e_{ct} \times I_{ct}^- \times$ emerging Asia _c	0.159 (0.124)	-0.020 (0.057)	0.657** (0.323)	0.153 (0.310)
$ \Delta \log e_{ct} \times I_{ct}^+ \times$ other emerging _c	-0.231 (0.402)	0.020 (0.128)	-0.739 (0.449)	0.136 (0.299)
$ \Delta \log e_{ct} \times I_{ct}^- \times$ other emerging _c	0.864*** (0.234)	0.219*** (0.077)	1.039** (0.427)	1.124** (0.528)
$ \Delta \log e_{ct} \times I_{ct}^+ \times$ industrialized _c	-0.056 (0.198)	-0.072 (0.094)	-0.790 (0.544)	-0.225 (0.313)
$ \Delta \log e_{ct} \times I_{ct}^- \times$ industrialized _c	-0.026 (0.143)	0.011 (0.048)	-0.062 (0.251)	0.430 (0.290)
Observations	1,333,986	1,333,986	1,275,606	772,970
R-squared	0.057	0.038	0.104	0.024
Country-sector FE	YES	YES	YES	YES
Time FE	YES	YES	YES	YES
Business cycle controls	YES	YES	YES	YES
Cluster	Country	Country	Country	Country

Notes: The dependent variable in columns (1)-(5) is the annual log difference in the following firm-level outcomes computed from Orbis for manufacturing firms for the years 2001-2010: revenue-based TFP computed from value-added (column 1), revenue-based TFP computed from gross output (column 2), nominal sales (column 3), cash flow (column 4). We do not present results for R&D status, which are not statistically significant. The construction of TFP is explained in section 4 of the paper. The main explanatory variable of interest is the absolute value of the annual log difference in the real exchange rate from the PWT 8.0 interacted with dummies for depreciation (I_{ct}^+) and appreciation (I_{ct}^-) and emerging Asia; other emerging economy; industrialized economy. The regressions also control for the real growth rate of GDP in PPP (from PWT8.0) and the inflation rate (from IMF).

Table A-10: Sensitivity analysis: Emerging Asia

Parameter	Value	Value	Value	Value	Data	Model	Model	Model	Model
	Baseline	$\sigma=6$	$\varepsilon=6$	$\alpha_2=0.04$		Baseline	$\sigma=6$	$\varepsilon=6$	$\alpha_2=0.04$
f_x	7.99	7.57	7.99	7.84	0.26	0.19	0.20	0.20	0.22
$f_{RD,0}$	13.38	12.75	13.38	12.63	0.26	0.26	0.25	0.26	0.26
f_{RD}	9.07	9.07	9.07	9.07	0.60	0.64	0.65	0.64	0.60
f_m	7.99	8.23	7.35	8.12	0.17	0.19	0.18	0.19	0.17
A	0.72	0.68	0.78	0.70	0.13	0.14	0.14	0.12	0.13
$\log(D_T)$	5.56	5.35	5.56	5.59	6.60	6.69	6.78	6.71	6.64
$\log(D_T^*)$	6.53	6.48	6.53	6.38	3.23	3.19	3.26	3.27	3.20
α_1	0.86	0.86	0.87	0.87					
σ_u	0.44	0.25	0.44	0.44	0.90	0.86	0.85	0.87	0.84
θ	15.11	15.12	15.08	15.09	0.06	0.03	0.04	0.03	0.05
					0.91	0.86	0.87	0.88	0.87
					0.12	0.21	0.21	0.20	0.20
					0.03	0.03	0.04	0.03	0.04
					0.04	0.05	0.06	0.05	0.07

Moments
(Cross-sectional moments)

(Cross-sectional moments)

R&D probability

Export probability

Export/Sales ratio, mean

Import probability

Import/Sales ratio, mean

Mean firm size (log revenue)

Sd, firm size (log revenue)

(Dynamic moments)

R&D, continuation probability

R&D, start probability

autocorrelation, TFPR

Elasticity of TFPR w.r.t RER

Elasticity of R.D w.r.t c. f. (4th firm-size quantile)

Elasticity of R.D w.r.t c. f. (dif of 4th and 2nd firm-size quantile)

Table A-11: Sensitivity analysis: other emerging economies

Parameter	Value	Value	Value	Value	Data	Model	Model	Model	Model
	Baseline	$\sigma=6$	$\varepsilon=6$	$\alpha_2=0.04$		Baseline	$\sigma=6$	$\varepsilon=6$	$\alpha_2=0.04$
f_x	4.17	2.92	3.97	3.74	0.25	0.22	0.22	0.24	0.25
$f_{RD,0}$	11.24	11.03	11.18	10.78	0.35	0.30	0.36	0.33	0.35
f_{RD}	7.84	7.72	7.76	7.84	0.10	0.12	0.14	0.13	0.12
f_m	5.88	5.88	5.29	5.70	0.39	0.35	0.35	0.37	0.37
A	0.97	0.98	1.03	0.97	0.24	0.24	0.28	0.27	0.24
$\log(D_T)$	4.88	4.36	4.87	4.90	5.97	5.98	5.92	5.97	5.96
$\log(D_T^*)$	3.02	2.55	3.03	3.02	2.63	2.67	2.65	2.63	2.63
α_1	0.84	0.84	0.84	0.84	0.90	0.83	0.84	0.83	0.80
σ_u	0.40	0.20	0.40	0.40	0.06	0.05	0.04	0.05	0.06
θ	11.02	14.03	12.02	11.02	0.87	0.85	0.85	0.85	0.84
					-0.11	-0.15	-0.20	-0.19	-0.16
					0.04	0.04	0.04	0.03	0.04
					0.05	0.07	0.07	0.07	0.08

Table A-12: Sensitivity analysis: industrialized economies

Parameter	Value	Value	Value	Moments (Cross-sectional moments)	Data	Model	Model	Model	
	Baseline	$\sigma=6$	$\varepsilon=6$			$\alpha_2=0.04$	Baseline	$\sigma = 6$	$\varepsilon=6$
f_x	6.82	6.04	6.82	6.90	0.56	0.40	0.41	0.40	0.45
$f_{RD,0}$	13.76	13.38	13.76	12.95	0.23	0.24	0.23	0.24	0.24
f_{RD}	9.12	8.54	9.12	9.12	0.17	0.15	0.16	0.15	0.17
f_m	8.43	8.38	7.85	8.28	0.20	0.19	0.20	0.20	0.21
A	0.69	0.68	0.79	0.69	0.14	0.13	0.14	0.13	0.13
$\log(D_T)$	6.66	6.31	6.66	6.73	7.64	7.64	7.65	7.63	7.64
$\log(D_T^*)$	4.99	4.43	4.99	5.21	2.91	2.91	2.88	2.89	2.93
α_1	0.79	0.79	0.79	0.79					
σ_u	0.54	0.30	0.54	0.55	0.90	0.90	0.91	0.90	0.88
θ	53.05	53.05	53.17	53.05	0.06	0.07	0.06	0.07	0.10
					0.91	0.81	0.82	0.81	0.80
					0.02	0.00	0.00	0.00	-0.01
					0.03	0.05	0.04	0.05	0.05